

LOC/DME I-SGS <b>108.35</b> Chan 20 (Y)	APP CRS <b>342°</b>	Rwy Idg TDZE Apt Elev	<b>4002</b> <b>820</b> <b>821</b>
---	------------------------	-----------------------------	---

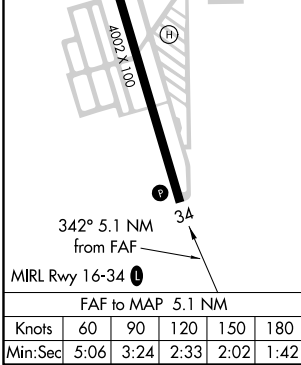
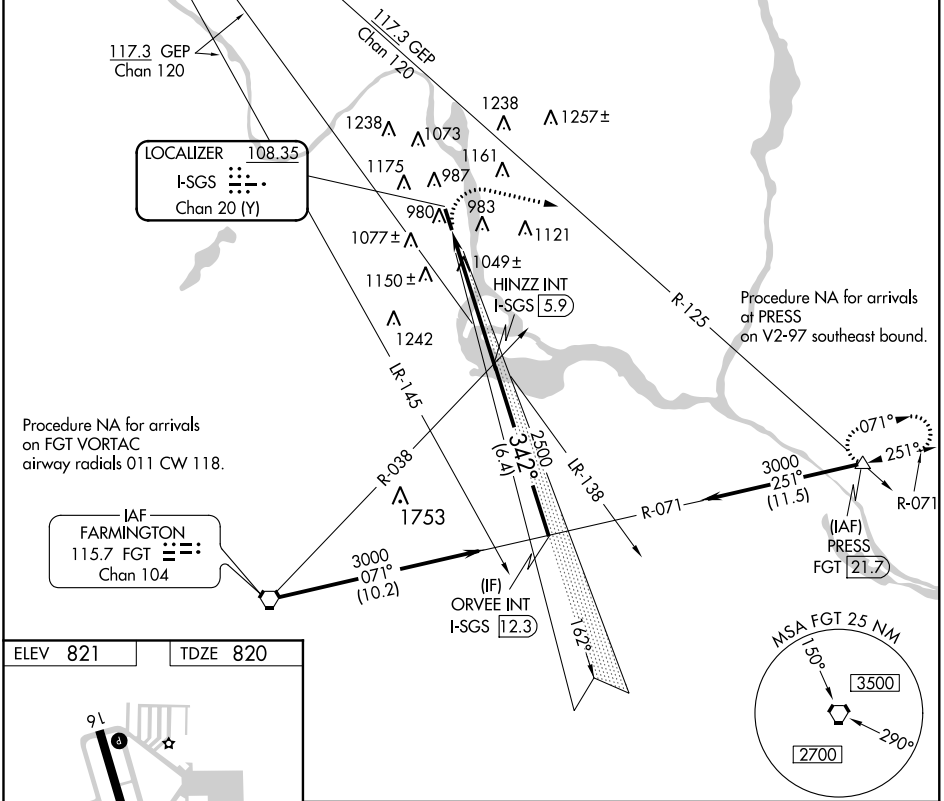
# LOC RWY 34

SOUTH ST PAUL MUNI-RICHARD E FLEMING FIELD (SGS)

**NA** Helicopter visibility reduction below 3/4 SM NA. When local altimeter setting not received, use Minneapolis-St Paul Intl/Wold-Chamberlain altimeter setting and increase all MDA 40 feet. Increase Circling Cat C/D visibility 1/4 mile.

MISSED APPROACH: Climbing right turn to 3000 on heading 100° and on GEP VORTAC R-125 to PRESS INT/21.7 DME and hold.

AWOS-3 <b>119.425</b>	MINNEAPOLIS APP CON <b>121.2 335.65</b>	CLNC DEL <b>118.2</b>	UNICOM <b>122.7 (CTAF)</b>
--------------------------	--	--------------------------	-------------------------------



3000 hdg 100°	GEP R-125	PRESS	HINZZ INT I-SGS 5.9	ORVEE INT I-SGS 12.3
I-SGS 0.8		3.04° TCH 40		3000
5.1 NM		6.4 NM		
CATEGORY	A	B	C	D
S-34	1300-1	480 (500-1)	1300-1 3/8	480 (500-1 3/8)
<b>C</b> CIRCLING	1400-1	1540-1	1540-2	1620-2 1/2
	579 (600-1)	719 (800-1)	719 (800-2)	799 (800-2 1/2)

# LOC RWY 34

NC-1, 01 MAR 2018 to 29 MAR 2018

NC-1, 01 MAR 2018 to 29 MAR 2018