

WAAS CH <b>99636</b> <b>W34A</b>	APP CRS <b>342°</b>	Rwy Idg TDZE Apt Elev	<b>4002</b> <b>820</b> <b>821</b>
----------------------------------------	------------------------	-----------------------------	-----------------------------------------

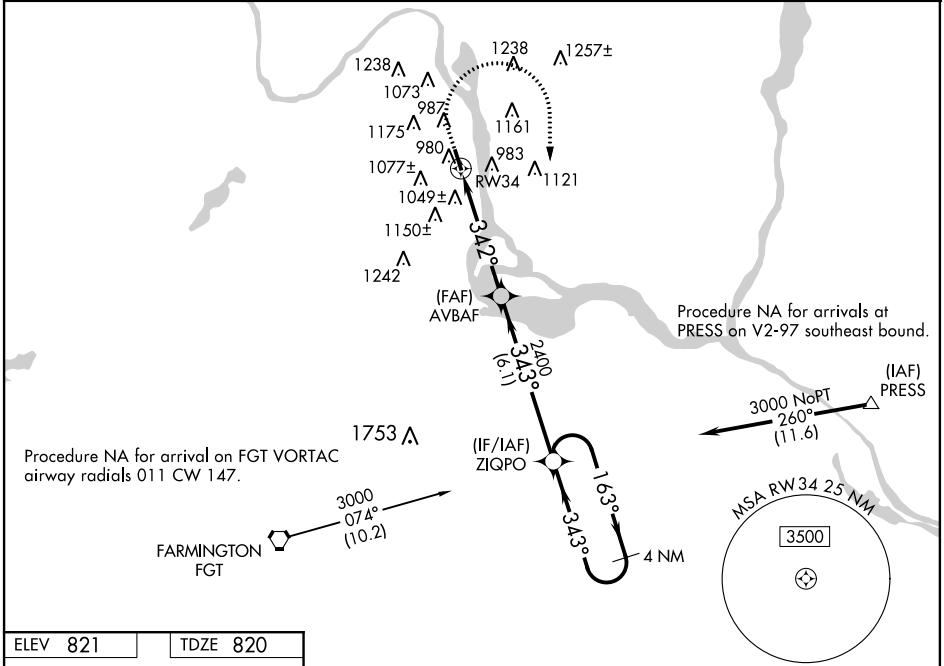
# RNAV (GPS) RWY 34

SOUTH ST PAUL MUNI-RICHARD E FLEMING FIELD (SGS)

**⚠** For uncompensated Baro-VNAV systems, LNAV-VNAV NA below -22°C (-7°F) or above 54°C (130°F). Rwy 34 helicopter visibility reduction below ¼ SM NA. DME/DME RNP-0.3 NA.

**⚠** MISSED APPROACH: Climb to 1400 then climbing right turn to 3000 direct ZIQPO and hold.

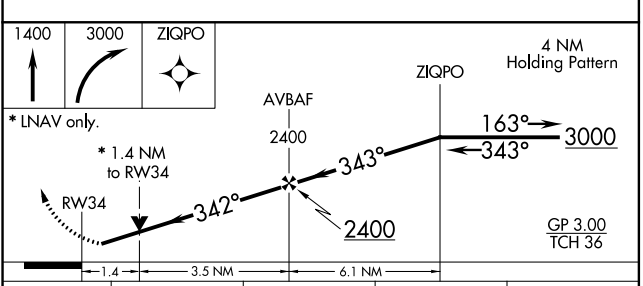
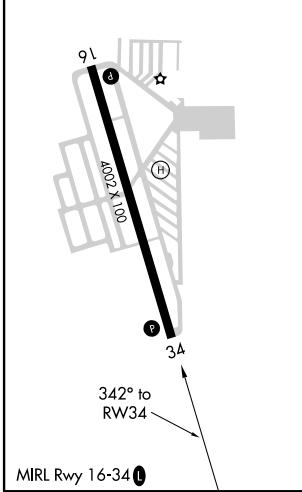
AWOS-3 <b>119.425</b>	MINNEAPOLIS APP CON <b>121.2 335.65</b>	CLNC DEL <b>118.2</b>	UNICOM <b>122.7 (CTAF) 0</b>
--------------------------	--------------------------------------------	--------------------------	---------------------------------



NC-1, 01 MAR 2018 to 29 MAR 2018

NC-1, 01 MAR 2018 to 29 MAR 2018

ELEV 821	TDZE 820
----------	----------



CATEGORY	A	B	C	D
LPV MDA		1102-7/8	282 (300-7/8)	
LNAV/VNAV DA		1378-1 1/8	558 (600-1 1/8)	
LNAV MDA	1300-1	480 (500-1)	1300-1 3/8	480 (500-1 3/8)
<b>C</b> CIRCLING	1400-1 579 (600-1)	1540-1 719 (800-1)	1540-2 719 (800-2)	1620-2 1/2 799 (800-2 1/2)