

(SNDOA3.SNDOA) 16315

SL-5369 (FAA)

SHENANDOAH VALLEY RGNL (SHD)

SHENANDOAH THREE DEPARTURE

STAUNTON/WAYNESBORO/HARRISONBURG, VIRGINIA

AWOS-3
124.925
CTAF
123.0
CLNC
118.35
POTOMAC DEP CON
132.85 323.125

**TOP ALTITUDE:
6000**

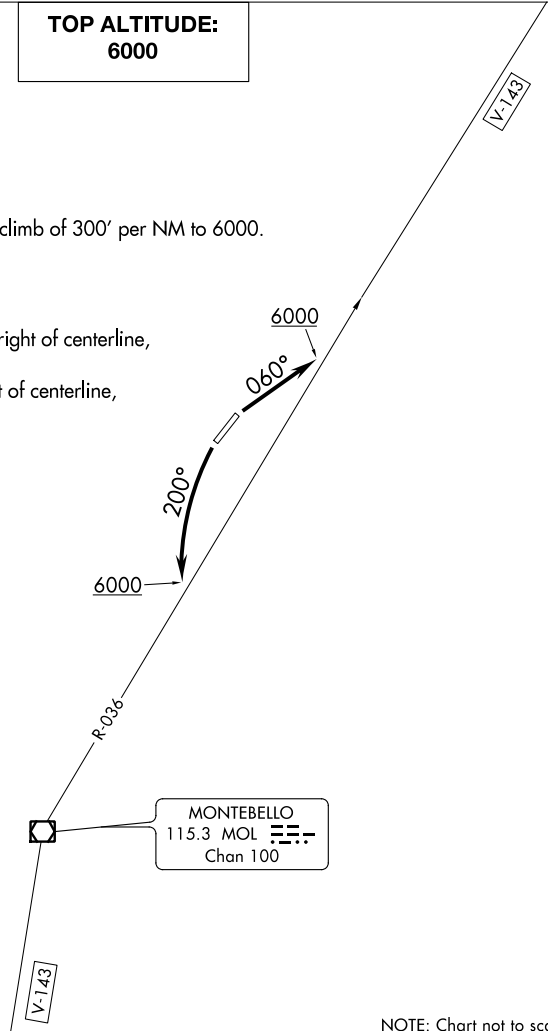
TAKEOFF MINIMUMS:

Rwys 5, 23: Standard with minimum climb of 300' per NM to 6000.

TAKEOFF OBSTACLE NOTES:

Rwy 5: Trees 1720' from DER, 635' right of centerline, up to 100' AGL/1279' MSL.
Rwy 23: Tree 679' from DER, 616' left of centerline, 35' AGL/1194' MSL.

NOTE: RADAR required.



NOTE: Chart not to scale.



DEPARTURE ROUTE DESCRIPTION

TAKEOFF RUNWAY 5: Climb heading 060° to 6000 to intercept MOL VOR/DME R-036 outbound, thence....

TAKEOFF RUNWAY 23: Climbing left turn to 6000 heading 200° to intercept MOL VOR/DME R-036 inbound, thence....

....expect radar vectors to filed/assigned route. Expect clearance to filed altitude/flight level 10 minutes after departure.

SHENANDOAH THREE DEPARTURE

(SNDOA3.SNDOA) 10NOV16

SHENANDOAH VALLEY RGNL (SHD)

NE-3, 01 MAR 2018 to 29 MAR 2018

NE-3, 01 MAR 2018 to 29 MAR 2018