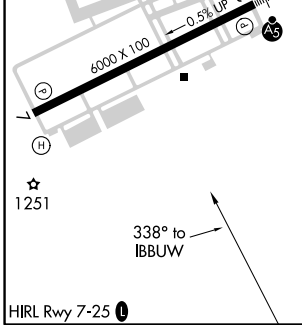
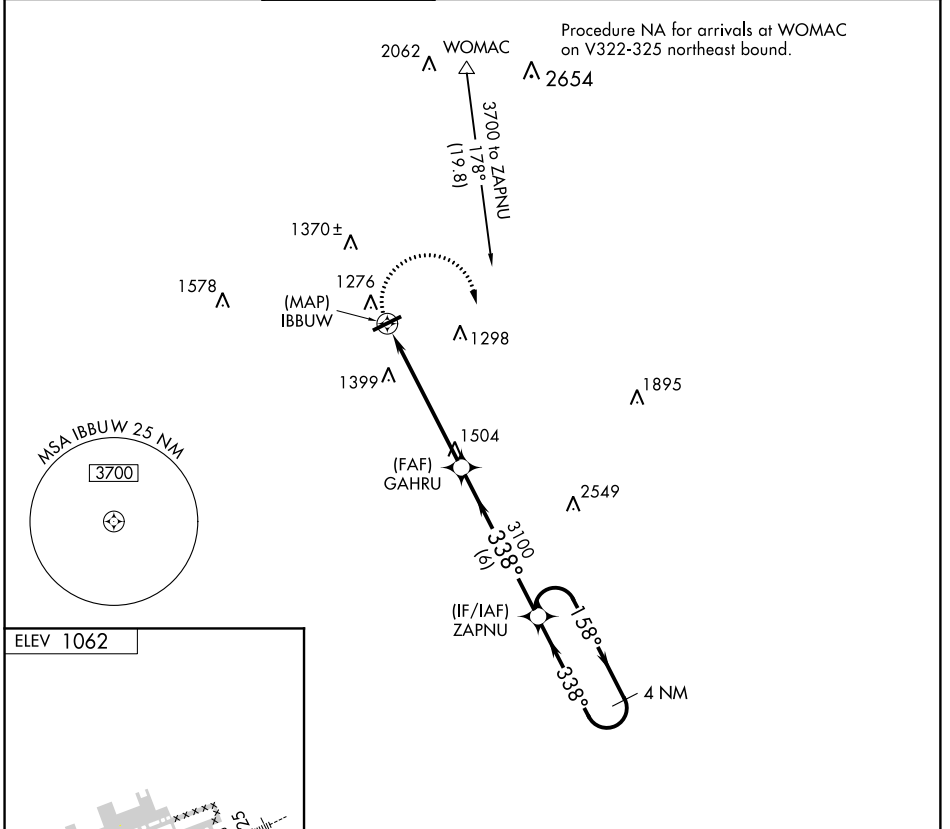


APP CRS <b>338°</b>	Rwy Idg TDZE Apt Elev	<b>N/A</b> <b>N/A</b> <b>1062</b>
------------------------	-----------------------------	---

# RNAV (GPS)-A

GWINNETT COUNTY-BRISCOE FIELD (LZU)

<p><b>▼</b> DME/DME RNP-0.3 NA. When local altimeter setting not received, use Winder altimeter setting and increase all MDAs 60 feet; increase Cat C and D visibility ¼ mile.</p>				<p><b>MISSED APPROACH:</b> Climbing right turn to 3600 direct ZAPNU and hold.</p>		
ATIS <b>132.275</b>	ATLANTA APP CON <b>126.975 239.275</b>	<b>GWINNETT TOWER ★</b> <b>124.1 (CTAF)</b>	GND CON <b>121.8</b>	CLNC DEL <b>121.8</b>	ATLANTA CLNC DEL <b>134.0</b> (When tower closed)	UNICOM <b>123.05</b>



3600	ZAPNU	4 NM Holding Pattern	
IBBUW		GAHRU	ZAPNU
3100		338°	158° → 3600
5.8 NM		6 NM	← 338°
CATEGORY	A	B	C
CIRCLING	1640-1	578 (600-1)	1640-1½ 578 (600-1½)
			D
			1700-2 638 (700-2)

# RNAV (GPS)-A

SE-4, 01 MAR 2018 to 29 MAR 2018

SE-4, 01 MAR 2018 to 29 MAR 2018