

VOR/DME PDK <b>116.6</b> Chan <b>113</b>	APP CRS <b>075°</b>	Rwy Idg TDZE <b>1061</b> Apt Elev <b>1062</b>	<b>6000</b>
--	------------------------	---	-------------

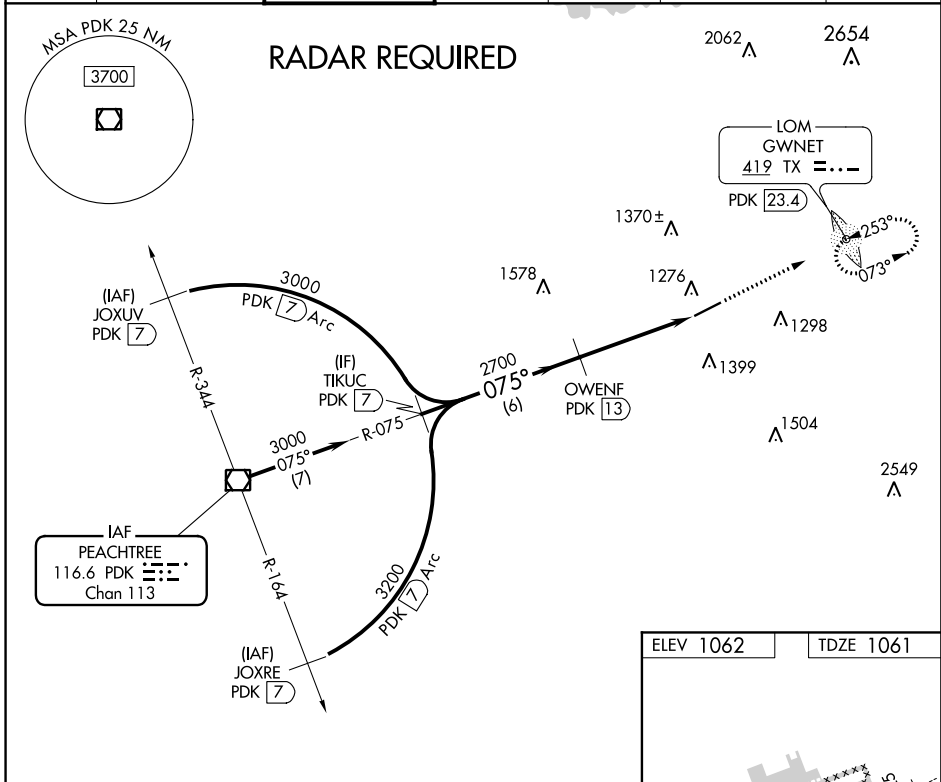
# VOR RWY 7

GWINNETT COUNTY-BRISCOE FIELD (LZU)

**⚠** Rwy 7 helicopter visibility reduction below  $\frac{3}{4}$  SM NA. When local altimeter setting not received, use Winder altimeter setting and increase all MDA 60 feet. Increase S-7 and Circling Cat C visibility  $\frac{1}{8}$  mile, and Circling Cat D  $\frac{1}{4}$  mile. DME required.

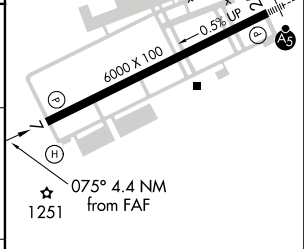
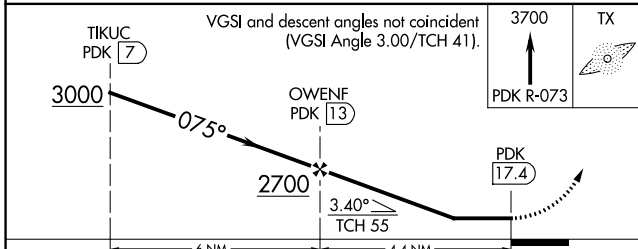
**⚠** MISSED APPROACH: Climb to 3700 on PDK VOR/DME R-073 to GWNET/PDK 23.4 DME and hold, continue climb-in-hold to 3700.

ATIS <b>132.275</b>	ATLANTA APP CON <b>126.975 239.275</b>	<b>GWINNETT TOWER</b> ★ <b>124.1</b> (CTAF) <b>0</b>	GND CON <b>121.8</b>	CLNC DEL <b>121.8</b>	ATLANTA CLNC DEL <b>134.0</b> (When tower closed)	UNICOM <b>123.05</b>
------------------------	---	---	-------------------------	--------------------------	---	-------------------------



SE-4, 01 MAR 2018 to 29 MAR 2018

SE-4, 01 MAR 2018 to 29 MAR 2018



CATEGORY	A	B	C	D
S-7	1660-1	599 (600-1)	1660-1 $\frac{3}{4}$	599 (600-1 $\frac{3}{4}$ )
CIRCLING	1660-1	598 (600-1)	1660-1 $\frac{3}{4}$ 598 (600-1 $\frac{3}{4}$ )	1700-2 638 (700-2)

HIRL Rwy 7-25 **0**