

APP CRS <b>083°</b>	Rwy Idg <b>4900</b>
	TDZE <b>634</b>
	Apt Elev <b>634</b>

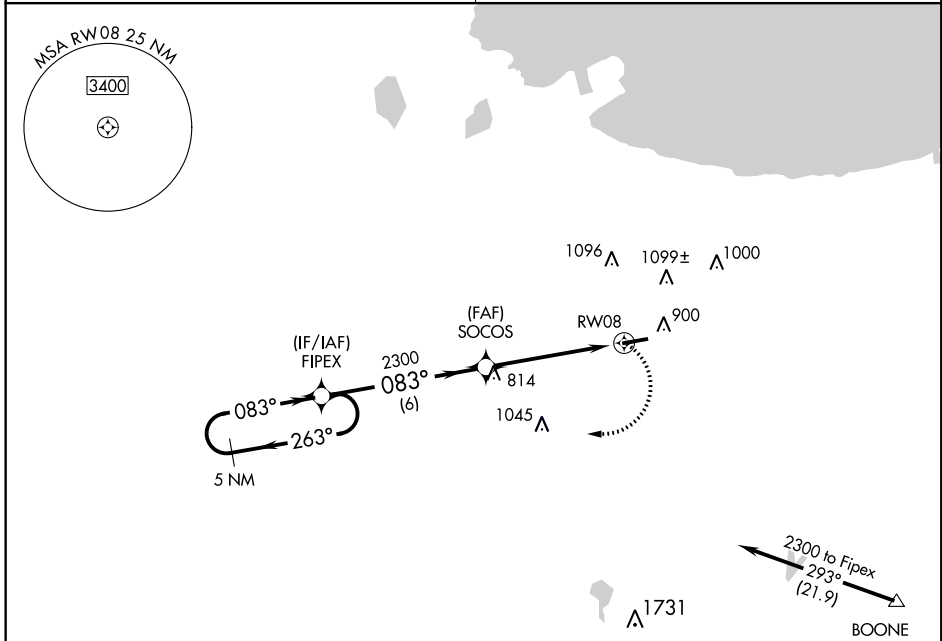
# RNAV (GPS) RWY 8

GRIFFITH-MERRILLVILLE (Ø5C)

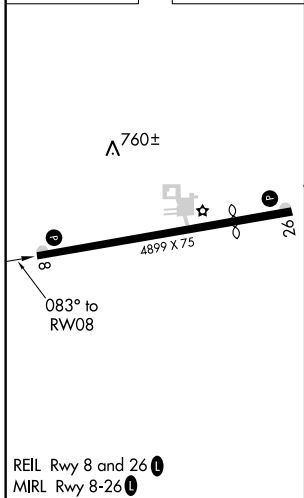
**⚠** DME/DME RNP -0.3 NA. Obtain local altimeter setting on CTAF; when not received use Chicago Midway Intl altimeter setting and increase all MDAs 60 feet. Visibility reduction by helicopters NA.

**⚠** NA MISSED APPROACH: Climbing right turn to 2300 direct FIPEX and hold.

CHICAGO APP CON <b>133.1 285.6</b>	UNICOM <b>123.0 (CTAF) 0</b>
---------------------------------------	---------------------------------



ELEV 634	TDZE 634
----------	----------



5 NM Holding Pattern	VGSIs and descent angles not coincident (VGSi Angle 3.50/TCH 44).		2300	FIPEX
	FIPEX	SOCOS		
2300	← 263°	→ 083°	2300	083°
			3.04°	TCH 41
			6 NM	5 NM
CATEGORY	A	B	C	D
LNAV MDA	1080-1	446 (500-1)	NA	
CIRCLING	1200-1	566 (600-1)	NA	

GRIFFITH, INDIANA  
Orig 15MAR07

41°31'N-87°24'W

# GRIFFITH-MERRILLVILLE (Ø5C)

## RNAV (GPS) RWY 8

EC-2. 01 MAR 2018 to 29 MAR 2018

EC-2. 01 MAR 2018 to 29 MAR 2018