

HERLONG RECREATIONAL (HEG)(KHEG) 8 SW UTC-5(-4DT) N30°16.67' W81°48.36'

JACKSONVILLE

86 B NOTAM FILE GNV

L-21D, 24G, A

RWY 07-25: H3999X100 (ASPH) S-30 MIRL

RWY 07: PAPI(P2L)—GA 3.0° TCH 40'. Tree.

RWY 25: PAPI(P2L)—GA 3.0° TCH 40'. Trees.

RWY 11-29: H3500X100 (ASPH) S-30 MIRL

RWY 11: PAPI(P2L)—GA 3.0° TCH 40'. Tree.

RWY 29: PAPI(P2L)—GA 3.0° TCH 40'. Tree.

SERVICE: S4 **FUEL** 100LL, JET A **LGT** PAPI Rwy 07, Rwy 11, Rwy 25 and Rwy 29 opr continuously. **ACTIVATE** MIRL Rwy 07-25 and Rwy 11-29—CTAF.

AIRPORT REMARKS: Attended 1130-0030Z†. Parachute Jumping. Ultralgt and glider act on and invof arpt.

AIRPORT MANAGER: (904) 741-5071

WEATHER DATA SOURCES: AWOS-3 119.275 (904) 695-0334.

COMMUNICATIONS: CTAF/UNICOM 123.0

Ⓡ **JACKSONVILLE APP/DEP CON** 127.775

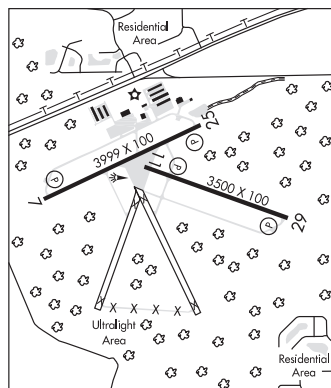
GCO 121.725 (Jacksonville CLNC and Gainesville FSS)

RADIO AIDS TO NAVIGATION: NOTAM FILE GNV.

TAYLOR (H) VORTAC 112.9 TAY Chan 76 N30°30.28'

W82°33.17' 112° 41.1 NM to fld. 140/3W.

VOR portion OTS indef



JACKSONVILLE EXECUTIVE AT CRAIG (CRG)(KCRG) 8 E UTC-5(-4DT) N30°20.18' W81°30.87'

JACKSONVILLE

41 B NOTAM FILE CRG

L-21D, 24G, A

RWY 14-32: H4008X100 (ASPH) S-30 HIRL

RWY 14: REIL. PAPI(P4L)—GA 3.0° TCH 44'. Tree.

RWY 32: MALSR. PAPI(P4L)—GA 3.0° TCH 43'.

RWY 05-23: H4004X100 (ASPH) S-30 MIRL

RWY 05: PAPI(P4L)—GA 3.0° TCH 47'. Tower.

RWY 23: REIL. PAPI(P4L)—GA 3.0° TCH 52'. Tree.

LAND AND HOLD—SHORT OPERATIONS

LDG RWY	HOLD—SHORT POINT	AVBL LDG DIST
RWY 05	14-32	3600
RWY 14	05-23	3650

RWY 05 14-32

RWY 14 05-23

SERVICE: S4 **FUEL** 100LL, JET A **LGT** When twr clsd **ACTIVATE** HIRL

Rwy 14-32 and MIRL Rwy 05-23, REIL Rwy 14 and Rwy 23 and MALSR Rwy 32—CTAF. PAPI Rwy 05, Rwy 14, Rwy 23, Rwy 32 opr continuously. Rwy 05 PAPI does not provide obstacle clearance beyond 3.5 miles on final to Rwy 05 due to large twrs located on extended centerline. PAPI Rwy 23 unusable byd 8° left and rgt of cntrln.

AIRPORT REMARKS: Attended Mon-Fri 1100-0400Z†, Sat-Sun

1200-0300Z†. Banner towing on wkends and special events.

Pavement accommodates Design Group II acft (up to 79' wingspan) up

to 60,000 lbs dual wheel loading. PPR for acft exceeding these limits

ctc at 904-741-2020. Birds periodically on or near arpt incr in act dur inclement wx. Wildlife on and invof arpt. VFR NS

ABTMT procedures in effect, call arpt mgr 904-641-7666. Wx permitting, Rwy 05 preferred for apch, Rwy 32 preferred

for departure. Rwy 05-23 has 75' stopways both ends. Rwy 14-32 has 75' stopways both ends.

AIRPORT MANAGER: (904) 741-5071

WEATHER DATA SOURCES: ASOS (904) 646-4670 **HIWAS** 114.5 CRG.

COMMUNICATIONS: CTAF 132.1 ATIS 125.4 **UNICOM** 122.95

RCO 122.1R 122.2 122.45 114.5T (GAINESVILLE RADIO)

Ⓡ **JACKSONVILLE APP CON** 124.9

TOWER 132.1 (1100-0400Z† Mon-Fri, 1200-0300Z† Sat-Sun) **GND CON** 121.8

Ⓡ **JACKSONVILLE DEP CON** 124.9 132.775 (251-069)

CLNC DEL 118.35

AIRSPACE: CLASS D svc 1100-0400Z† Mon-Fri; 1200-0300Z† Sat-Sun other times CLASS G.

RADIO AIDS TO NAVIGATION: NOTAM FILE CRG.

CRAIG (H) VORTAC 114.5 CRG Chan 92 N30°20.33' W81°30.60' at fld. 42/3W. **HIWAS.**

ILS 111.7 I-CRG Rwy 32. Class IT.

