

AGUDE FIVE ARRIVAL

AL-263 (FAA)

MINNEAPOLIS-ST PAUL, MINNESOTA

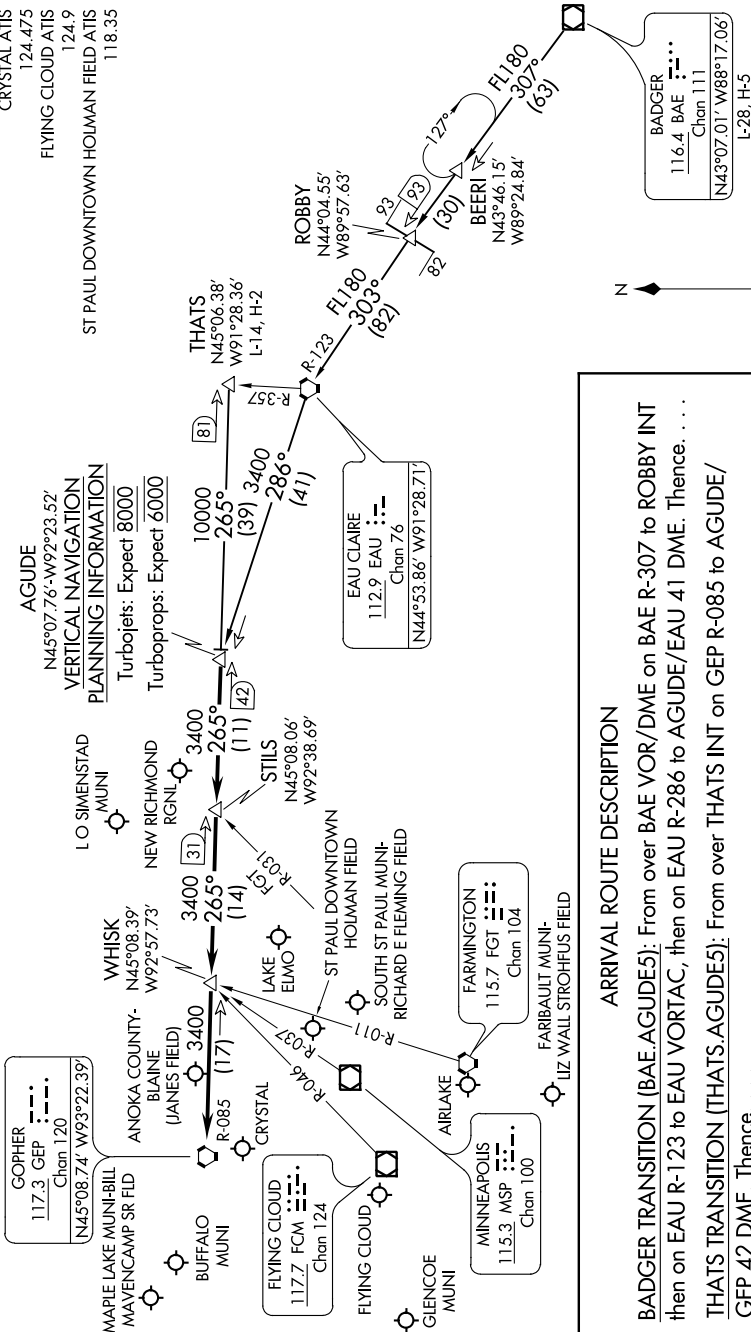
NC-1, 29 MAR 2018 to 26 APR 2018

NOTE: Chart not to scale.

NOTE: DME and RADAR required.

MINNEAPOLIS APP CON
121.2 335.5
ANOKA COUNTY BLAINE (JANES FIELD) ATIS
120.625
CRYSTAL ATIS
124.475
FLYING CLOUD ATIS
124.9
ST PAUL DOWNTOWN HOLMAN FIELD ATIS
118.35

AGUDE
N45°07.76'-W92°23.52'
VERTICAL NAVIGATION
PLANNING INFORMATION
Turbolojets: Expect 8000
Turboprops: Expect 6000



ARRIVAL ROUTE DESCRIPTION

BADGER TRANSITION (BAE.AGUDE5): From over BAE VOR/DME on BAE R-307 to ROBBERY INT then on EAU R-123 to EAU VORTAC, then on EAU R-286 to AGUDE/EAU 41 DME. Thence. . . .

THATS TRANSITION (THATS.AGUDE5): From over THATS INT on GEP R-085 to AGUDE/ GEP 42 DME. Thence. . . .

. . . . From over AGUDE/GEP 42 DME via GEP R-085 to GEP VORTAC, then expect RADAR vectors to final approach course.

AGUDE FIVE ARRIVAL

NC-1, 29 MAR 2018 to 26 APR 2018