

WAAS CH 99636 W34A	APP CRS 342°	Rwy Idg TDZE Apt Elev	4002 820 821
--	------------------------	-----------------------------	---

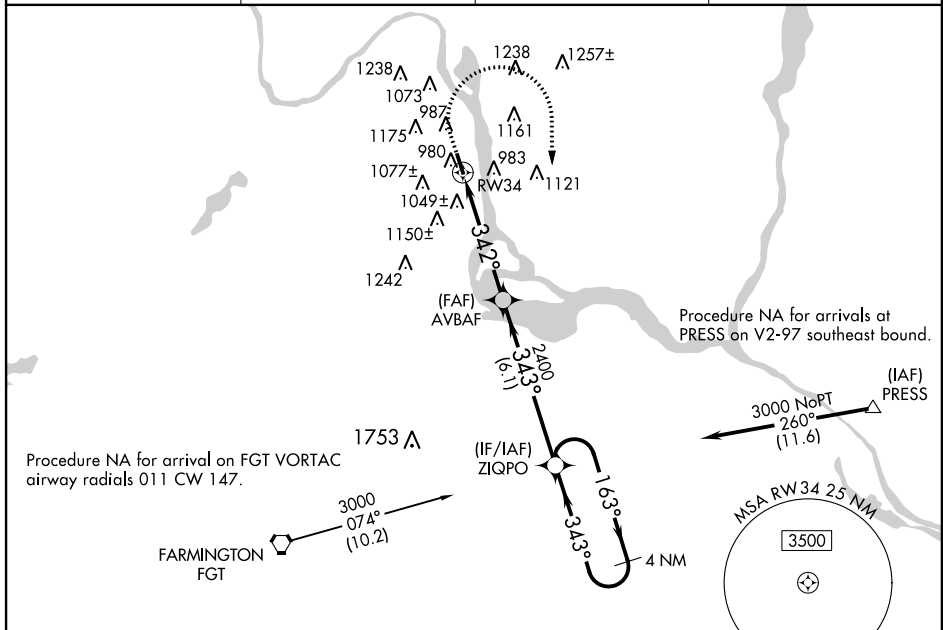
RNAV (GPS) RWY 34

SOUTH ST PAUL MUNI-RICHARD E FLEMING FIELD (SGS)

▼ For uncompensated Baro-VNAV systems, LNAV-VNAV NA below -22°C (-7°F) or above 54°C (130°F). Rwy 34 helicopter visibility reduction below ¼ SM NA.
▲ DME/DME RNP-0.3 NA.

MISSED APPROACH: Climb to 1400 then climbing right turn to 3000 direct ZIQPO and hold.

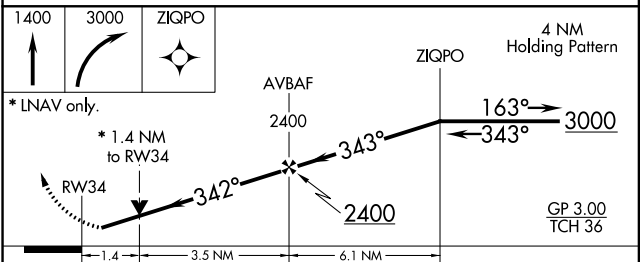
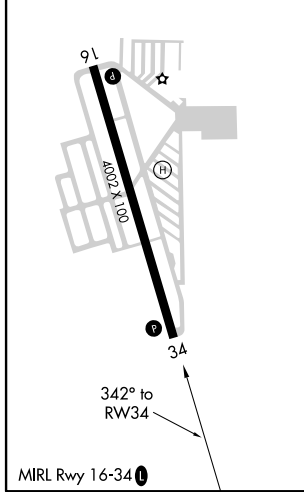
AWOS-3 119.425	MINNEAPOLIS APP CON 121.2 335.65	CLNC DEL 118.2	UNICOM 122.7 (CTAF) 0
--------------------------	--	--------------------------	---------------------------------



NC-1, 29 MAR 2018 to 26 APR 2018

NC-1, 29 MAR 2018 to 26 APR 2018

ELEV 821	TDZE 820
----------	----------



CATEGORY	A	B	C	D
LPV MDA		1102-7/8	282 (300-7/8)	
LNAV/VNAV DA		1378-1/8	558 (600-1/8)	
LNAV MDA	1300-1	480 (500-1)	1300-1 3/8	480 (500-1 3/8)
C CIRCLING	1400-1 579 (600-1)	1540-1 719 (800-1)	1540-2 719 (800-2)	1620-2 1/2 799 (800-2 1/2)

RNAV (GPS) RWY 34