

AL-5369 (FAA)

# ILS or LOC RWY 5

SHENANDOAH VALLEY RGNL (SHD)

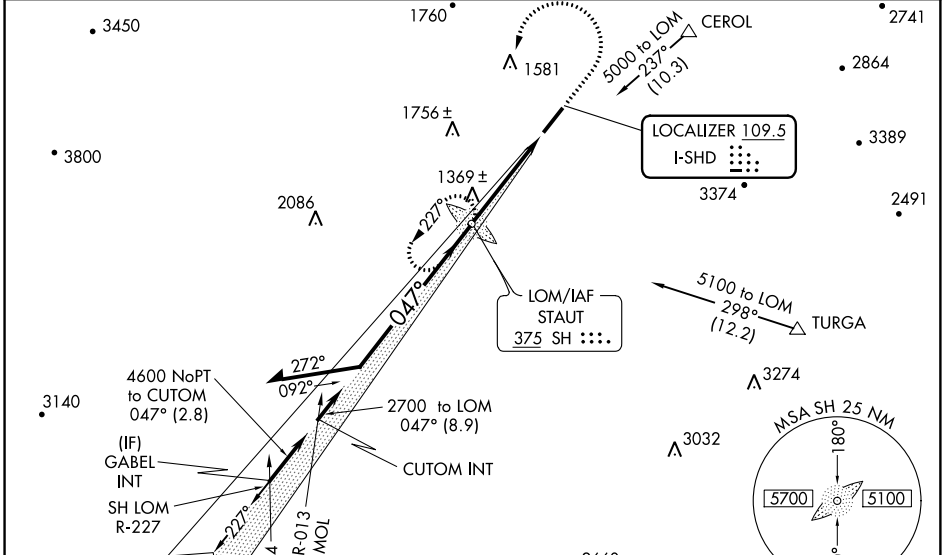
LOC I-SHD <b>109.5</b>	APP CRS <b>047°</b>	Rwy Idg <b>6002</b>	TDZE <b>1184</b>
		Apt Elev <b>1201</b>	

**ADF Required.** Autopilot coupled approach NA below 1494 feet. When local altimeter setting not received, use Charlottesville altimeter setting and increase all DA 130 feet, all MDA 140 feet. Increase ILS visibility ¼ mile all Cats, LOC visibility Cat C/D ¼ mile and Circling Cat D ½ mile. For inoperative MALSRS when using Charlottesville altimeter setting, increase ILS visibility to 1¼ miles.

**MALSRS**

**MISSED APPROACH:** Climb to 2600 then climbing left turn to 3600 direct SH LOM and hold.

AWOS-3 <b>124.925</b>	POTOMAC APP CON <b>132.85 323.125</b>	CLNC DEL <b>118.35</b>	UNICOM <b>123.0 (CTAF)</b>
--------------------------	--	---------------------------	-------------------------------



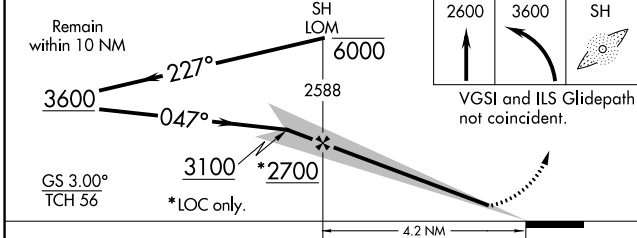
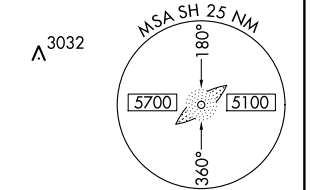
**ALTERNATE MISSED APCH FIX**

MONTEBELLO MOL 115.3 Chan 100

R-271 -091°

IAF MONTEBELLO 115.3 MOL Chan 100

3851



ELEV 1201 TDZE 1184

REIL Rwy 23

HIRL Rwy 5-23

1229

1246

6002 X 150

0.4% UP

1233

047° 4.2 NM from FAF

FAF to MAP 4.2 NM

Knots	60	90	120	150	180
Min:Sec	4:12	2:48	2:06	1:41	1:24

CATEGORY	A	B	C	D
S-ILS 5		1384-½	200 (200-½)	
S-LOC 5	1620-½	436 (500-½)	1620-¾ 436 (500-¾)	1620-1 436 (500-1)
CIRCLING	1620-1 419 (500-1)	1660-1 459 (500-1)	1660-1½ 459 (500-1½)	1820-2 619 (700-2)

NE-3, 29 MAR 2018 to 26 APR 2018

NE-3, 29 MAR 2018 to 26 APR 2018