

APP CRS <b>083°</b>	Rwy Idg <b>4900</b> TDZE <b>634</b> Apt Elev <b>634</b>
------------------------	---

# RNAV (GPS) RWY 8

GRIFFITH-MERRILLVILLE (Ø5C)

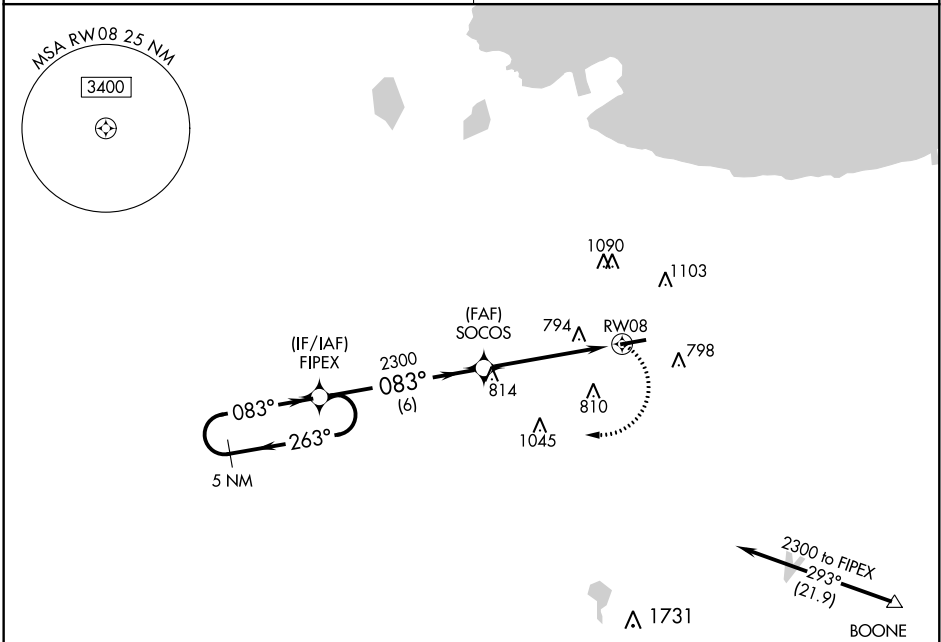
**▽** DME/DME RNP -0.3 NA. Obtain local altimeter setting on CTAF; when not received use Chicago Midway Intl altimeter setting and increase all MDAs 60 feet. Visibility reduction by helicopters NA.

**▲** NA

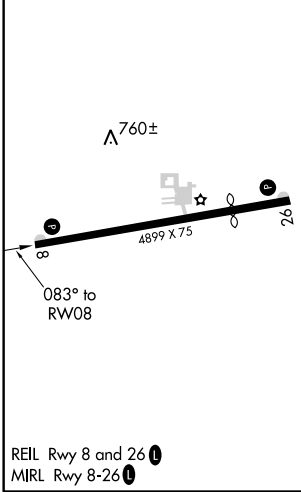
**MISSED APPROACH:** Climbing right turn to 2300 direct FIPEX and hold.

CHICAGO APP CON  
**133.1 285.6**

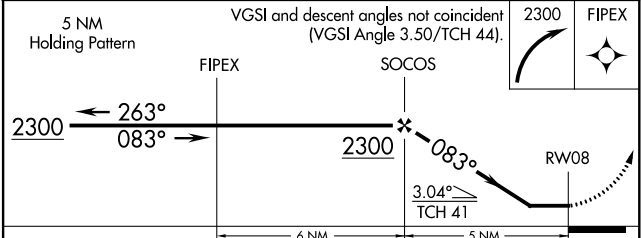
UNICOM  
**123.0 (CTAF) 0**



ELEV 634	TDZE 634
----------	----------



Procedure NA for arrivals at BOONE via V422 southeastbound.



CATEGORY	A	B	C	D
LNNAV MDA	1080-1	446 (500-1)	NA	
CIRCLING	1200-1	566 (600-1)	NA	

EC-2, 29 MAR 2018 to 26 APR 2018

EC-2, 29 MAR 2018 to 26 APR 2018