

VORTAC BDF <b>114.7</b> Chan <b>94</b>	APP CRS <b>133°</b>	Rwy Idg <b>4003</b> TDZE <b>564</b> Apt Elev <b>585</b>
--	------------------------	---

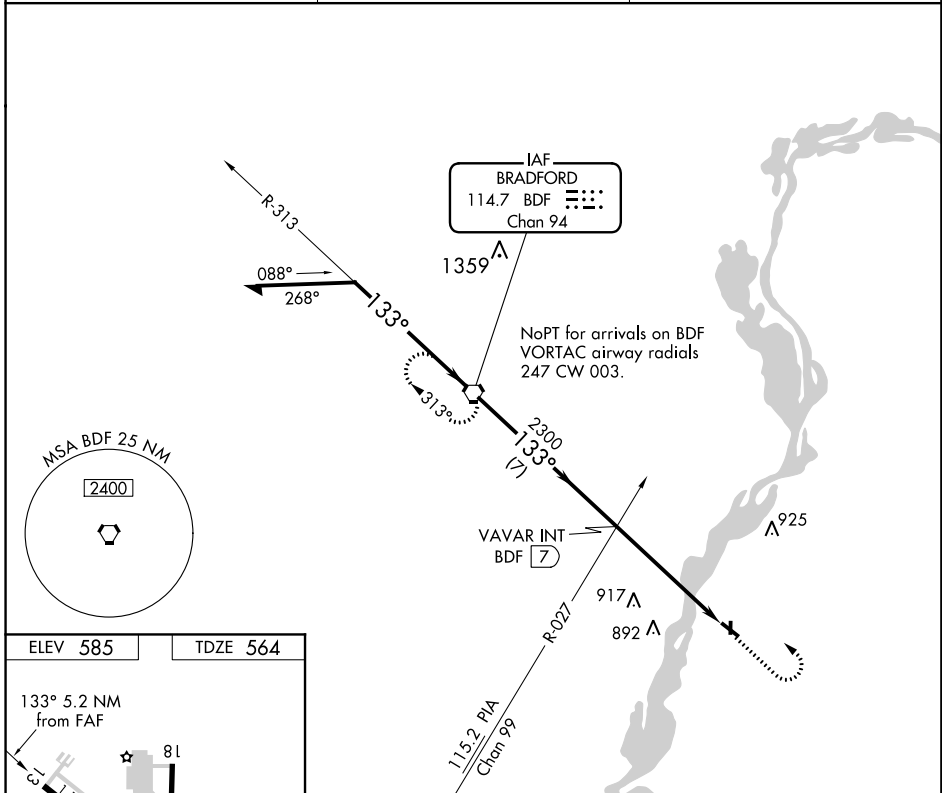
# VOR RWY 13

MARSHALL COUNTY (C75)

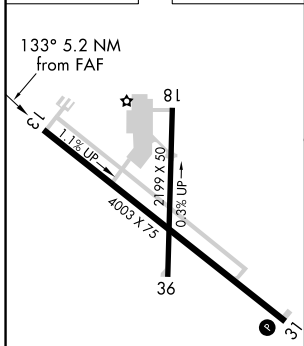
⚠ When local altimeter not received, use Peru climeter setting and increase all MDA 80 feet, increase S-13 Cat C visibility to 1 1/8, and Circling Cat C visibility to 2. Night landing: Rwy 18, 31, 36 NA.  
 Helicopter visibility reduction below 3/4 SM NA.

⚠ MISSED APPROACH: Climb to 1500, then climbing left turn to 2500 direct BDF VORTAC and hold.

AWOS-3 <b>119.425</b>	CHICAGO CENTER <b>124.55 398.9</b>	UNICOM <b>122.8 (CTAF) 0</b>
--------------------------	---------------------------------------	---------------------------------

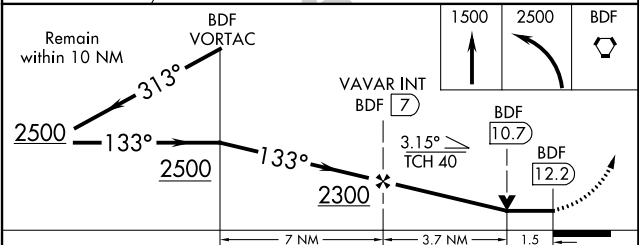


ELEV 585	TDZE 564
----------	----------



- REIL Rwy 13 0
- MIRL Rwy 13-31 0
- LIRL Rwy 18-36

FAF to MAP 5.2 NM					
Knots	60	90	120	150	180
Min:Sec	5:12	3:28	2:36	2:05	1:44



CATEGORY	A	B	C	D
S-13	1140-1	576 (600-1)	1140-1 5/8 576 (600-1 5/8)	NA
<input checked="" type="checkbox"/> CIRCLING	1140-1	572 (600-1)	1200-1 3/4 615 (700-1 3/4)	NA

EC-3, 29 MAR 2018 to 26 APR 2018

EC-3, 29 MAR 2018 to 26 APR 2018