

WAAS CH <b>90424</b> <b>W22A</b>	APP CRS <b>220°</b>	Rwy Idg TDZE <b>35</b> Apt Elev <b>35</b>
--	------------------------	---

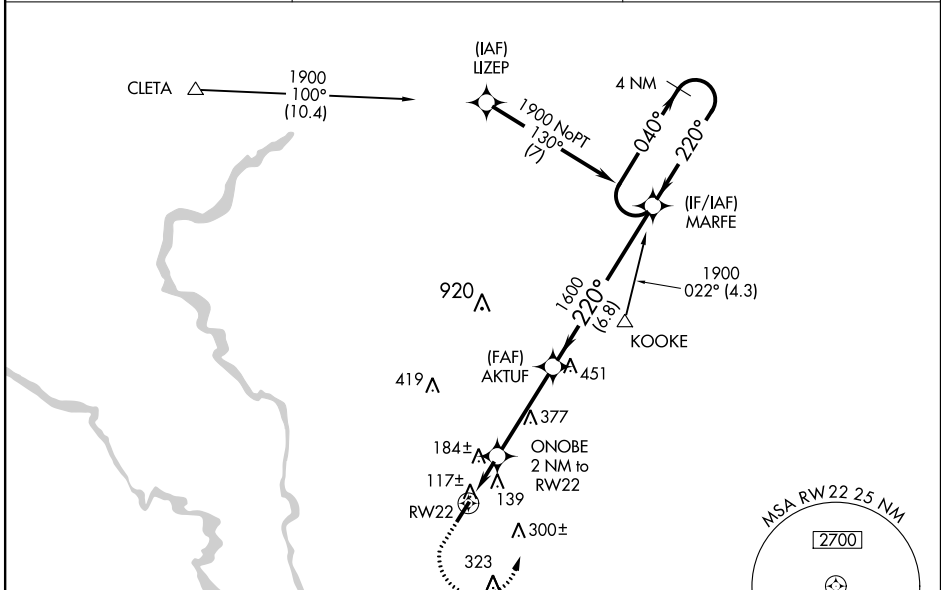
# RNAV (GPS) RWY 22

CONWAY-HORRY COUNTY (HYW)

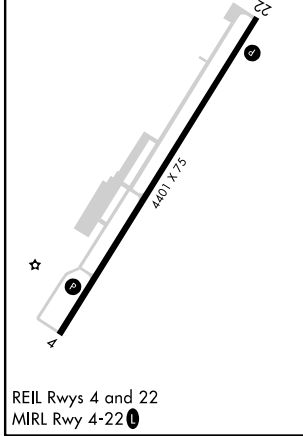
▼ For uncompensated Baro-VNAV systems, LNAV/VNAV NA below -15°C (5°F) or above 43°C (109°F). DME/DME RNP-0.3 NA. Helicopter visibility reduction below 1 SM NA. When local altimeter setting not received, use Myrtle Beach altimeter setting and increase all DA 32 feet and all MDA 40 feet; increase LNAV/VNAV all Cats visibility 1/8 mile and LNAV Cats C and D visibility 1/4 mile. Baro-VNAV NA when using Myrtle Beach altimeter setting. When VGSi inop, Straight-in/Circling Rwy 22 procedure NA at night.

MISSED APPROACH: Climb to 500 then climbing left turn to 1900 direct MARFE and hold.

AWOS-3 <b>119.525</b>	MYRTLE BEACH APP CON ★ <b>127.4 257.95</b>	UNICOM <b>122.7 (CTAF) 0</b>
--------------------------	---	---------------------------------



ELEV <b>35</b>	TDZE <b>35</b>
----------------	----------------



500	1900	MARFE	VGSi and RNAV glidepath not coincident (VGSi Angle 4.00/TCH 43).		4 NM Holding Pattern
*LNAV only.		ONOBE 2 NM to RW22	AKTUF	MARFE	1900
RW22		*700	1600	220°	040°
2 NM		3.7 NM	6.8 NM	220°	← 220°
				GP 3.00° TCH 40	
CATEGORY	A	B	C	D	
LPV DA	285-1 250 (300-1)				
LNAV/VNAV DA	438-1 3/8 403 (500-1 3/8)				
LNAV MDA	440-1	405 (500-1)	440-1 1/8	405 (500-1 1/8)	
CIRCLING	520-1	485 (500-1)	520-1 1/2	600-2	
			485 (500-1 1/2)	565 (600-2)	

SE-2. 29 MAR 2018 to 26 APR 2018

SE-2. 29 MAR 2018 to 26 APR 2018