

# AGUDE FIVE ARRIVAL

AL-263 (FAA)

MINNEAPOLIS-ST PAUL, MINNESOTA

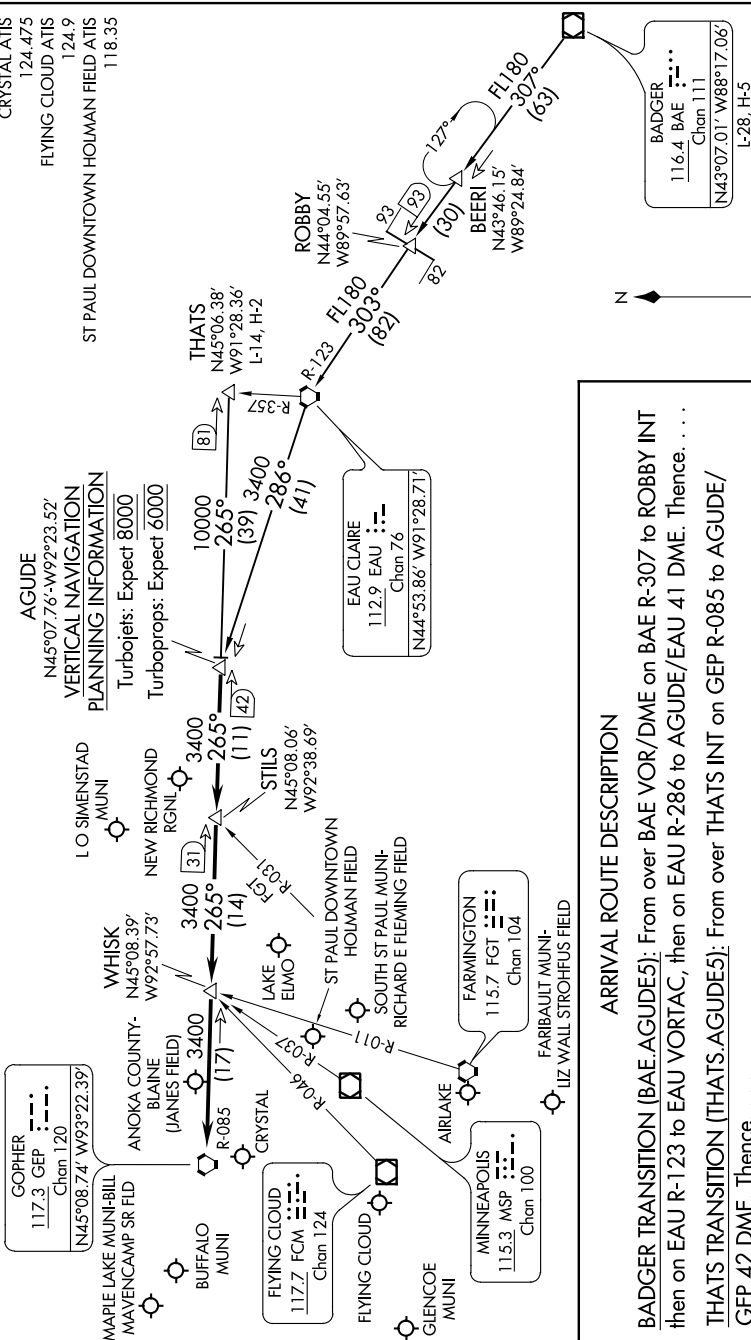
NC-1, 26 APR 2018 to 24 MAY 2018

NOTE: Chart not to scale.

NOTE: DME and RADAR required.

MINNEAPOLIS APP CON  
121.2 335.5  
ANOKA COUNTY BLAINE (JANES FIELD) ATIS  
120.625  
CRYSTAL ATIS  
124.475  
FLYING CLOUD ATIS  
124.9  
ST PAUL DOWNTOWN HOLMAN FIELD ATIS  
118.35

AGUDE  
N45°07.76'-W92°23.52'  
VERTICAL NAVIGATION  
PLANNING INFORMATION  
Turbolojets: Expect 8000  
Turboprops: Expect 6000



**ARRIVAL ROUTE DESCRIPTION**

**BADGER TRANSITION (BAE.AGUDE5):** From over BAE VOR/DME on BAE R-307 to ROBBERY INT then on EAU R-123 to EAU VORTAC, then on EAU R-286 to AGUDE/EAU 41 DME. Thence. . . .

**THATS TRANSITION (THATS.AGUDE5):** From over THATS INT on GEP R-085 to AGUDE/ GEP 42 DME. Thence. . . .

. . . . From over AGUDE/GEP 42 DME via GEP R-085 to GEP VORTAC, then expect RADAR vectors to final approach course.

NC-1, 26 APR 2018 to 24 MAY 2018