

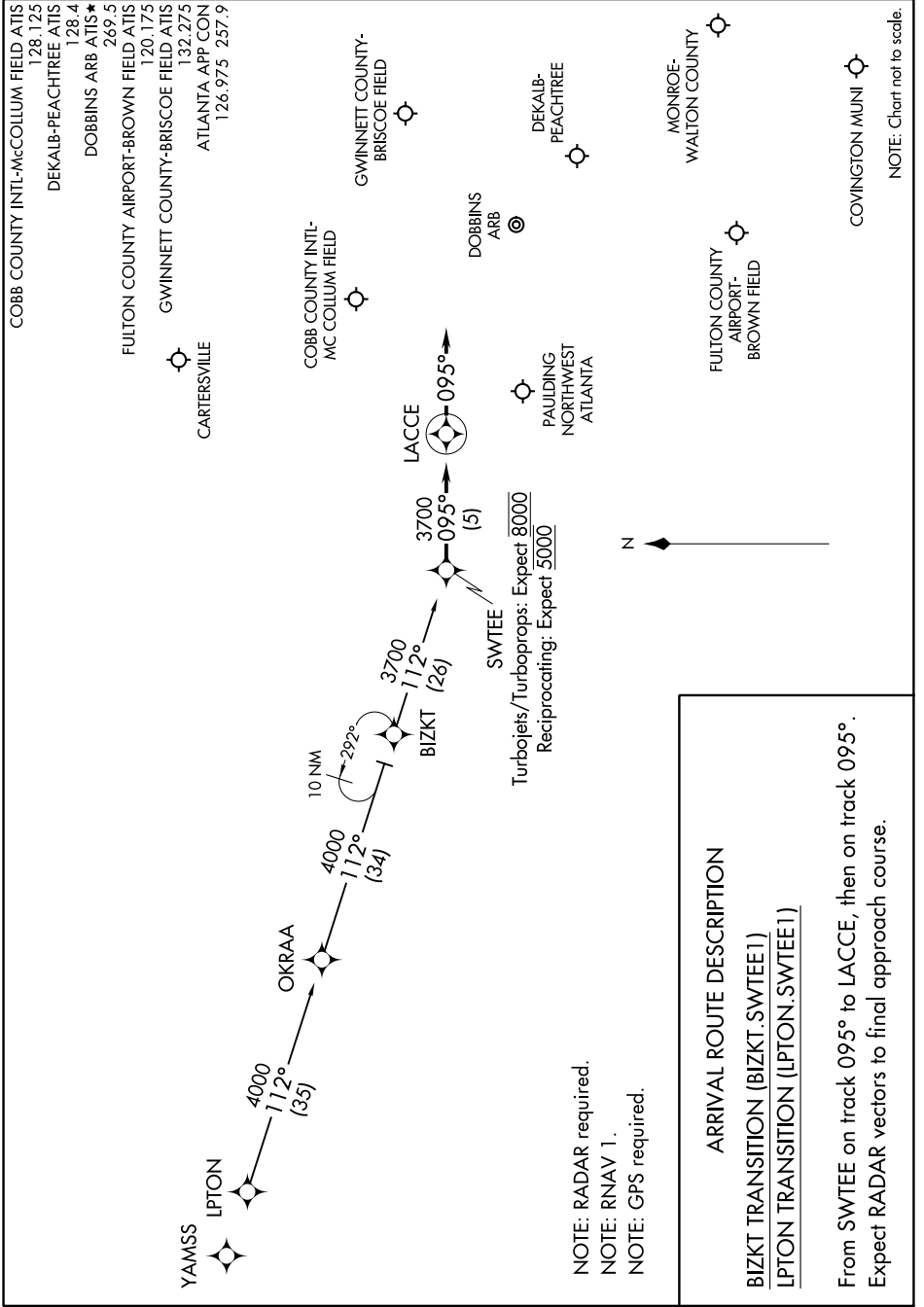
(SWTEE.SWTEE1) 16315

SWTEE ONE ARRIVAL (RNAV)

ST-469 (FAA)

ATLANTA, GEORGIA

SE-4, 26 APR 2018 to 24 MAY 2018



- NOTE: RADAR required.
- NOTE: RNAV 1.
- NOTE: GPS required.

ARRIVAL ROUTE DESCRIPTION

BIZKT TRANSITION (BIZKT.SWTEE1)

LPTON TRANSITION (LPTON.SWTEE1)

From SWTEE on track 095° to LACCE, then on track 095°. Expect RADAR vectors to final approach course.

SWTEE ONE ARRIVAL (RNAV)

(SWTEE.SWTEE1) 15SEP16

ATLANTA, GEORGIA

SE-4, 26 APR 2018 to 24 MAY 2018

NOTE: Chart not to scale.