

LOC/DME I- EAR 110.9 Chan 46	APP CRS 358°	Rwy Idg 7094 TDZE 2131 Apt Elev 2131
---	------------------------	---

ILS or LOC RWY 36

KEARNEY RGNL (EAR)

⚠ When local altimeter setting not received, use Holdrege altimeter setting and increase all DA 77 feet and all MDA 80 feet, increase S-ILS visibility all Cats 1/8 mile, increase S-LOC visibility Cat C, D 1/4 mile.

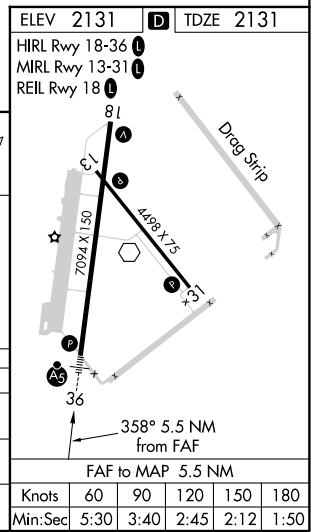
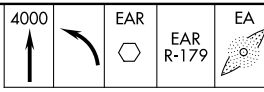
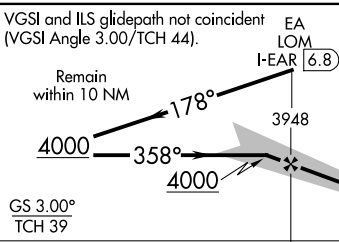
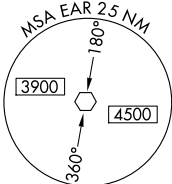
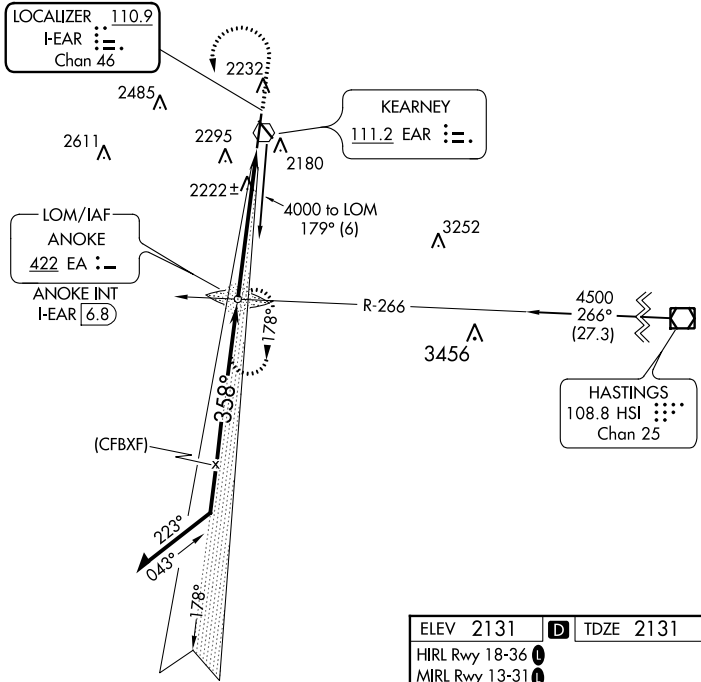


MISSED APPROACH: Climb to 4000 then left turn direct EAR VOR and EAR R-179 to ANOKE LOM/INT/I-**EAR** 6.8 DME and hold.

AWOS-3PT
123.875

MINNEAPOLIS CENTER
119.4 278.8

UNICOM
123.0 (CTAF) ⓓ



CATEGORY	A	B	C	D
S-ILS 36	2331-1/2 200 (200-1/2)			
S-LOC 36	2540-1/2	409 (500-1/2)	2540-3/4	409 (500-3/4)
CIRCLING	2600-1	469 (500-1)	2600-1 1/2	2700-2
			469 (500-1 1/2)	569 (600-2)

NC-2, 26 APR 2018 to 24 MAY 2018

NC-2, 26 APR 2018 to 24 MAY 2018