

WAAS CH 65631 W13A	APP CRS 132°	Rwy Idg 4498 TDZE 2130 Apt Elev 2131
--	------------------------	---

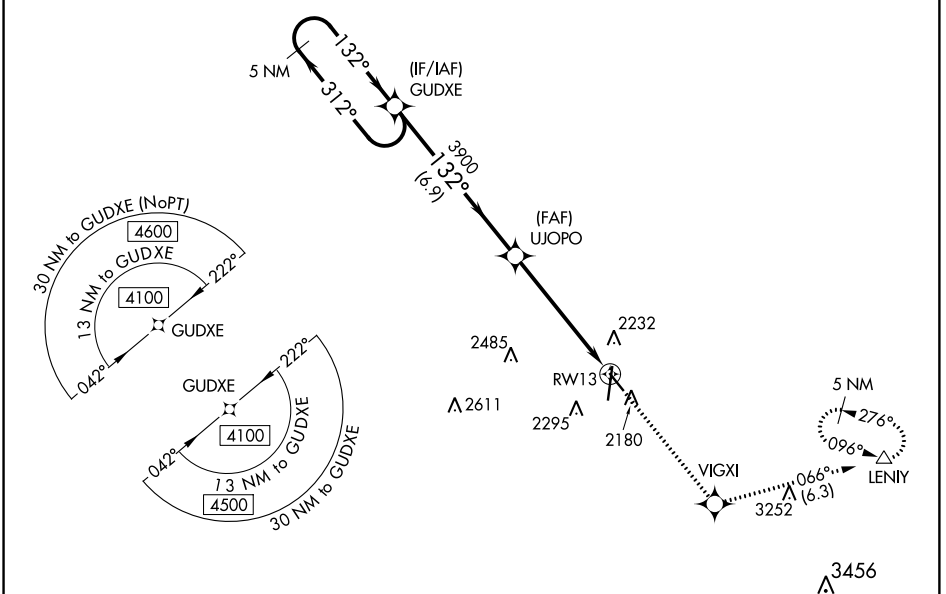
RNAV (GPS) RWY 13

KEARNEY RGNL (E.A.R.)

⚠ For uncompensated Baro-VNAV systems, LNAV/VNAV NA below -19°C (-2°F) or above 54°C (130°F). DME/DME RNP-0.3 NA. When local altimeter setting not received, use Holdrege altimeter setting and increase all DA 77 feet and all MDA 80 feet, increase LPV visibility all Cats 1/8 mile, increase LNAV/VNAV visibility all Cats 3/8 mile, and LNAV Circling Cat C visibility 1/8 mile.

MISSED APPROACH: Climb to 4300 direct VIGXI and on track 066° to LENIY and hold.

AWOS-3PT 123.875	MINNEAPOLIS CENTER 119.4 278.8	UNICOM 123.0 (CTAF) 0
----------------------------	--	---------------------------------



NC-2. 26 APR 2018 to 24 MAY 2018

NC-2. 26 APR 2018 to 24 MAY 2018

5 NM Holding Pattern		GUDXE	UJOPO	VIGXI	LENIY
4100 ← 312°		→ 132°	3900	4300	tr 066°
GP 3.00° TCH 43		→ 132°	*1.7 NM to RWY 13		*LNAV only
		6.9 NM	3.7 NM	1.7 NM	
CATEGORY	A	B	C	D	
LPV DA		2330-3/4	200 (200-3/4)		NA
LNAV/VNAV DA		2380-3/4	250 (300-3/4)		NA
LNAV MDA	2720-1	590 (600-1)	2720-1 3/4 590 (600-1 3/4)		NA
CIRCLING	2720-1	589 (600-1)	2720-1 3/4 589 (600-1 3/4)		NA

