

WAAS CH <b>86213</b> <b>W18A</b>	APP CRS <b>178°</b>	Rwy Idg TDZE <b>2131</b> Apt Elev <b>2131</b>	<b>7094</b>
----------------------------------------	------------------------	-----------------------------------------------------	-------------

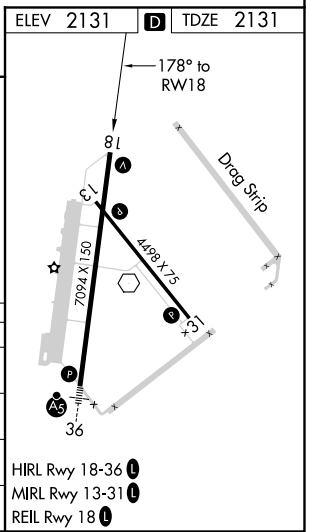
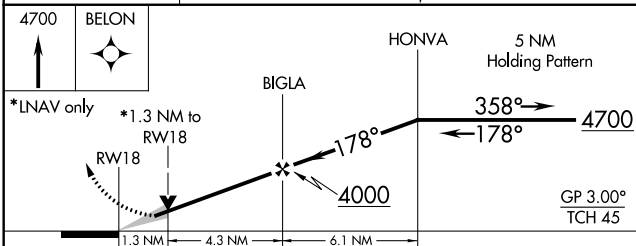
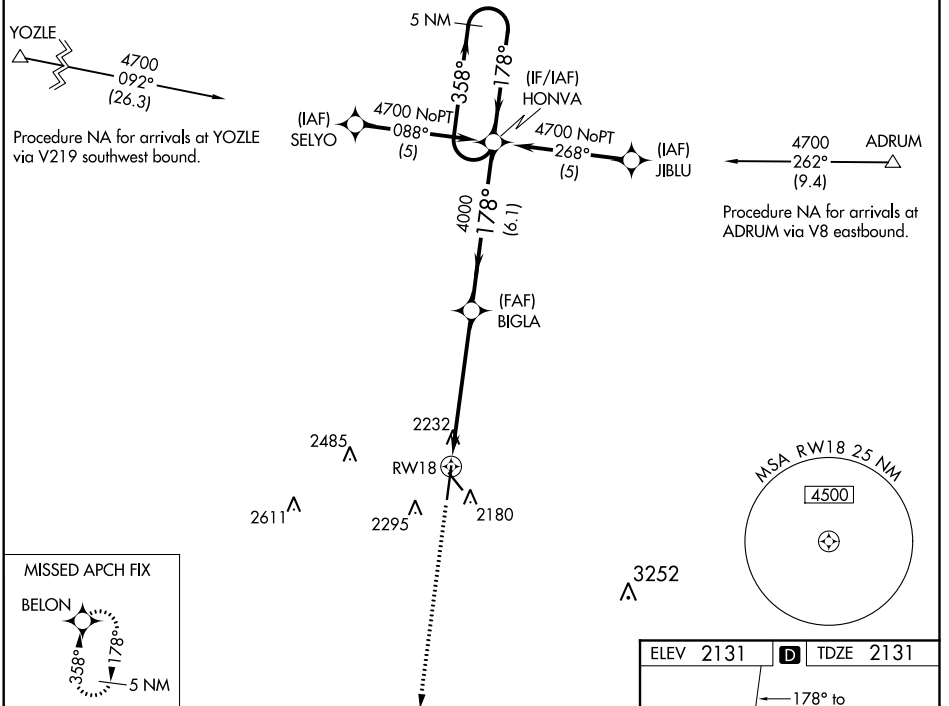
# RNAV (GPS) RWY 18

KEARNEY RGNL (E.A.R.)

**⚠** Baro-VNAV NA below -1°C (-2°F). DME/DME RNP-0.3 NA. If local altimeter setting not received, use Brewster Field altimeter setting and increase all DAs/MDAs 80 feet. Baro-VNAV and VDP NA when using Brewster Field altimeter setting.

**⚠** MISSED APPROACH: Climb to 4700 direct BELON and hold.

AWOS-3PT <b>123.875</b>	MINNEAPOLIS CENTER <b>119.4 278.8</b>	UNICOM <b>123.0 (CTAF) ①</b>
----------------------------	------------------------------------------	---------------------------------



CATEGORY	A	B	C	D
LPV DA	2470-1¼		339 (400-1¼)	
LNAV/VNAV DA	2520-1½		389 (400-1½)	
LNAV MDA	2600-1	469 (500-1)	2600-1¼ 469 (500-1¼)	2600-1½ 469 (500-1½)
CIRCLING	2600-1½ 469 (500-1½)		2700-2 569 (600-2)	

NC-2: 26 APR 2018 to 24 MAY 2018

NC-2: 26 APR 2018 to 24 MAY 2018