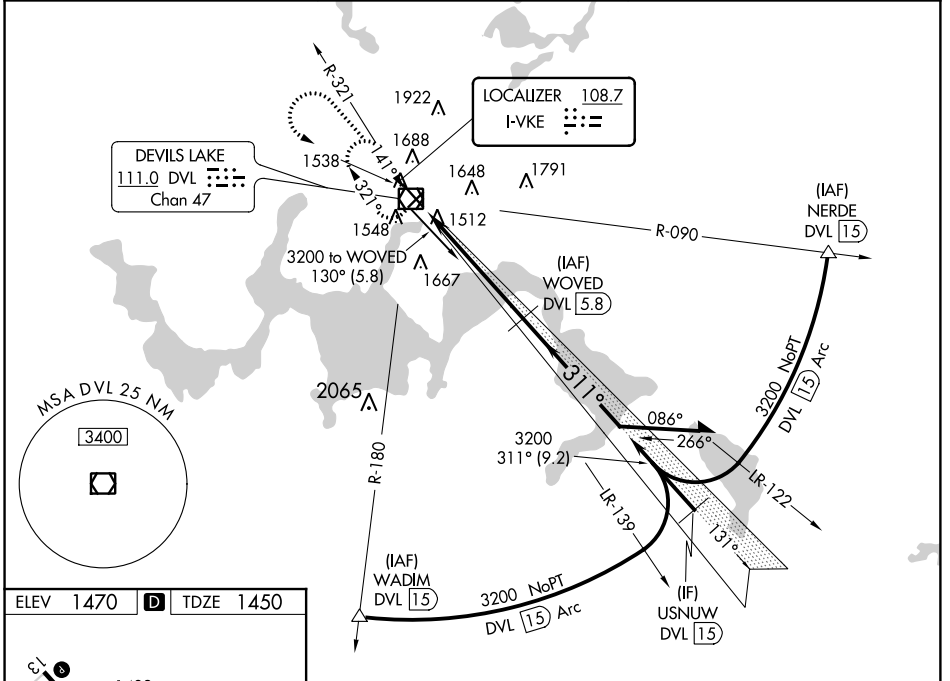


LOC I-VKE 108.7	APP CRS 311°	Rwy Idg TDZE Apt Elev	6401 1450 1470
---------------------------	------------------------	-----------------------------	---

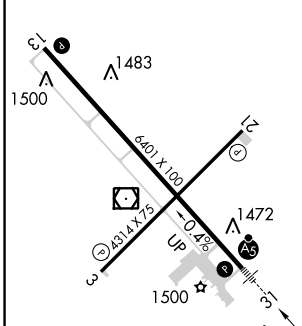
ILS or LOC/DME RWY 31

DEVILS LAKE RGNL (DVL)

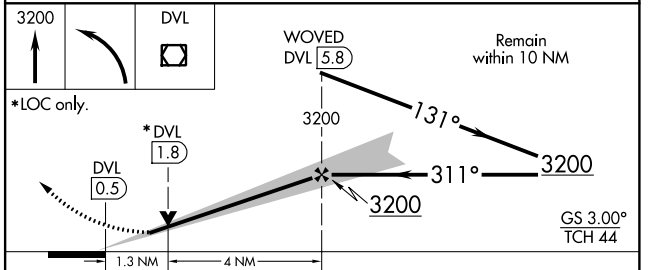
<p>NA When local altimeter setting not received, use Cando altimeter setting and increase all DA 63 feet and all MDA 80 feet and increase S-LOC 31 Cat C/D and Circling Cat C/D visibility ¼ mile. For inop MALSR when using Cando altimeter setting, increase S-ILS 31 all Cats visibility to ¾ mile and S-LOC 31 Cat C/D to 1½ mile. DME from DVL VOR/DME. Simultaneous reception of I-VKE and DVL DME required.</p>	<p>MALSR</p>	<p>MISSED APPROACH: Climb to 3200 then left turn direct DVL VOR/DME and hold.</p>
<p>AWOS-3PT 125.875</p>	<p>GRAND FORKS RADIO 122.3</p>	<p>UNICOM 122.8 (CTAF)</p>



ELEV 1470	D	TDZE 1450
-----------	----------	-----------



HIRL Rwy 13-31 **0**
 REIL Rwy 3, 13 and 21 **0**
 MIRL Rwy 3-21 **0**



CATEGORY	A	B	C	D
S-ILS 31		1650-½	200 (200-½)	
S-LOC 31		1780-½	330 (400-½)	
C CIRCLING	2000-1	530 (600-1)	2240-2¼ 770 (800-2¼)	2240-2½ 770 (800-2½)

NC-1, 26 APR 2018 to 24 MAY 2018

NC-1, 26 APR 2018 to 24 MAY 2018