

WAAS CH 78314 W13A	APP CRS 131°	Rwy Idg 6401 TDZE 1470 Apt Elev 1470
--	------------------------	---

RNAV (GPS) RWY 13

DEVILS LAKE RGNL (DVL)

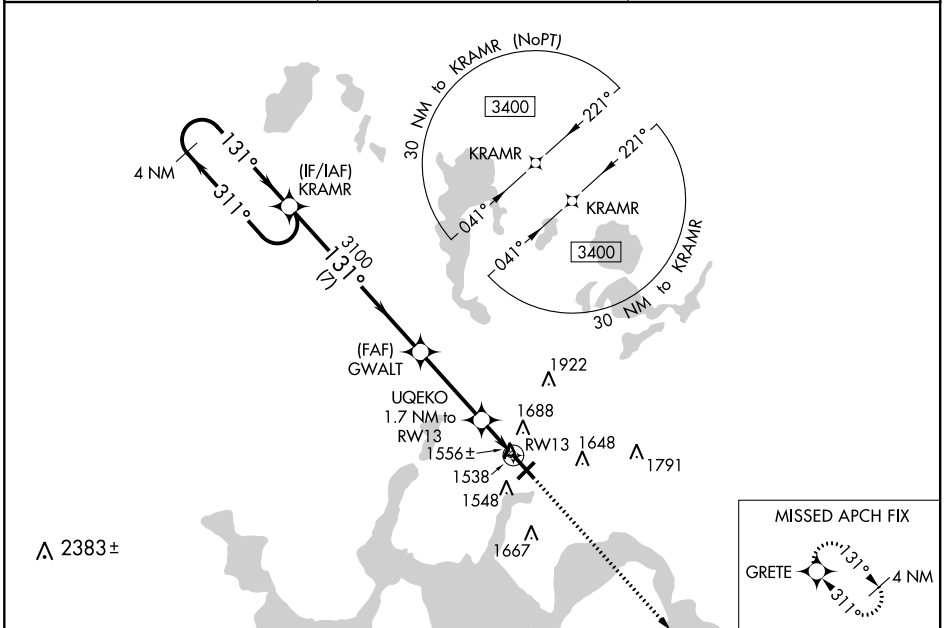
⚠ For uncompensated Baro-VNAV systems, LNAV/VNAV NA below -17°C (2°F) or above 54°C (130°F). DME/DME RNP-0.3 NA. Baro-VNAV and VDP NA when using Cando altimeter setting. When local altimeter setting not received, use Cando altimeter setting and increase all DA 63 feet and all MDA 80 feet, increase LPV and LNAV/VNAV all. Cats visibility ¼ mile, LNAV and Circling Cats C and D visibility ½ mile.

MISSED APPROACH: Climb to 3400 direct GRETE and hold.

AWOS-3PT
125.875

GRAND FORKS RADIO
122.3

UNICOM
122.8 (CTAF)



NC-1, 26 APR 2018 to 24 MAY 2018

NC-1, 26 APR 2018 to 24 MAY 2018

4 NM Holding Pattern		KRAMR		VGSI and RNAV glidepath not coincident (VGSI Angle 3.00/TCH 45).		3400 GRETE		ELEV 1470		D TDZE 1470	
GP 3.00° TCH 50		3100		*2060		*0.9 NM to RW13		131° to RW13		1483	
7 NM		3.3 NM		0.8 NM		0.9 NM		1500		1472	
CATEGORY	A	B	C	D							
LPV DA	1720-¾		250 (300-¾)								
LNAV/VNAV DA	1791-1		321 (400-1)								
LNAV MDA	1820-1		350 (400-1)								
CIRCLING	2000-1	530 (600-1)	2240-2¼	2240-2½							
			770 (800-2¼)		770 (800-2½)						

