

VOR/DME DVL 111.0 Chan 47	APP CRS 138°	Rwy Idg TDZE Apt Elev	6401 1470 1470
--	------------------------	-----------------------------	---

VOR RWY 13
DEVILS LAKE RGNL (DVL)

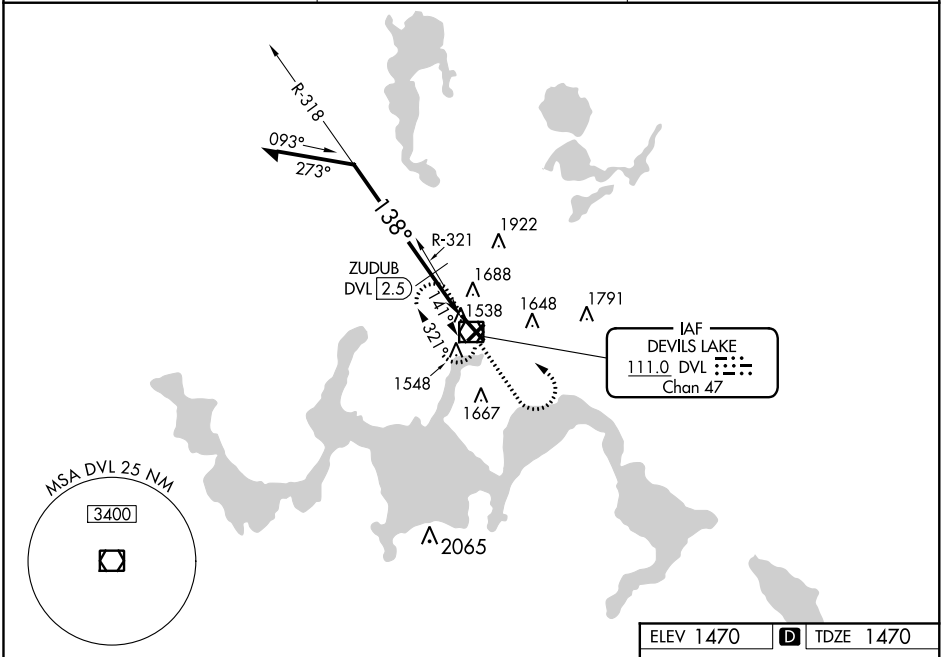
⚠ VDP NA with Cando altimeter setting. When local altimeter setting not received, use Cando altimeter setting and increase all MDA 80 feet, and increase S-13 and Circling Cats C and D visibility ¼ mile, increase ZUDUB fix minimums S-13 and Circling Cats C and D visibility ¼ mile.

MISSED APPROACH: Climb to 3100 then left turn direct DVL VOR/DME and hold.

AWOS-3PT
125.875

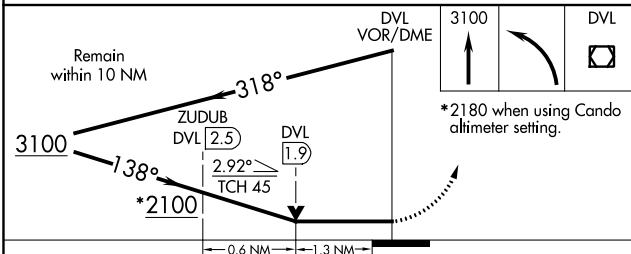
GRAND FORKS RADIO
122.3

UNICOM
122.8 (CTAF) **📻**



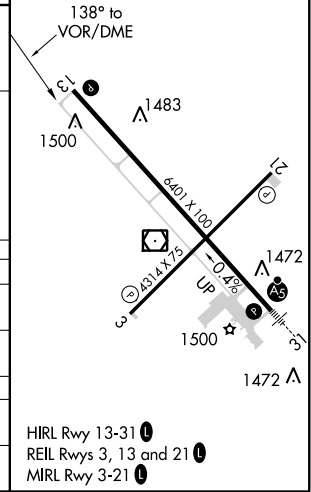
NC-1, 26 APR 2018 to 24 MAY 2018

NC-1, 26 APR 2018 to 24 MAY 2018



ELEV 1470 **D** TDZE 1470

CATEGORY	A	B	C	D
S-13	2100-1	630 (700-1)	2100-1¾	630 (700-1¾)
C CIRCLING	2100-1	630 (700-1)	2240-2¼ 770 (800-2¼)	2240-2½ 770 (800-2½)
ZUDUB FIX MINIMUMS (DME REQUIRED)				
S-13	1940-1	470 (500-1)	1940-1¾	470 (500-1¾)
C CIRCLING	2000-1	530 (600-1)	2240-2¼ 770 (800-2¼)	2240-2½ 770 (800-2½)



HIRL Rwy 13-31 **📻**
REIL Rwys 3, 13 and 21 **📻**
MIRL Rwy 3-21 **📻**