

# RNAV (GPS)-A

GWINNETT COUNTY-BRISCOE FIELD (LZU)

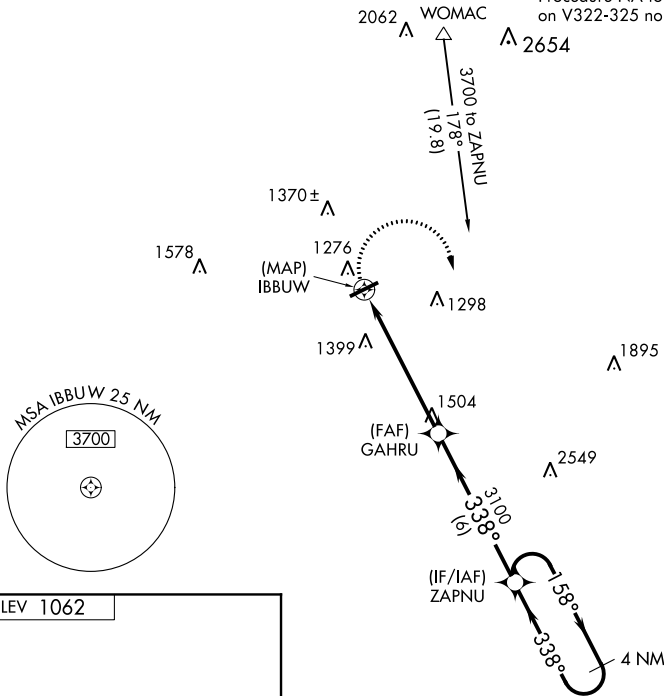
APP CRS <b>338°</b>	Rwy Idg TDZE Apt Elev	<b>N/A</b> <b>N/A</b> <b>1062</b>
------------------------	-----------------------------	---

**⚠** DME/DME RNP-0.3 NA. When local altimeter setting not received, use Winder altimeter setting and increase all MDAs 60 feet; increase Cat C and D visibility ¼ mile.

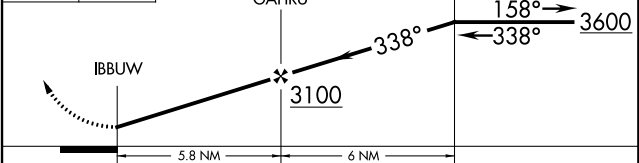
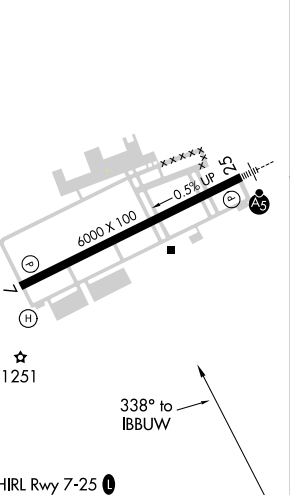
**MISSED APPROACH:** Climbing right turn to 3600 direct ZAPNU and hold.

ATIS <b>132.275</b>	ATLANTA APP CON <b>126.975 239.275</b>	<b>GWINNETT TOWER ★</b> <b>124.1</b> (CTAF) <b>0</b>	GND CON <b>121.8</b>	CLNC DEL <b>121.8</b>	ATLANTA CLNC DEL <b>134.0</b> (When tower closed)	UNICOM <b>123.05</b>
------------------------	---	---	-------------------------	--------------------------	---	-------------------------

Procedure NA for arrivals at WOMAC on V322-325 northeast bound.



ELEV 1062



CATEGORY	A	B	C	D
CIRCLING	1640-1	578 (600-1)	1640-1½ 578 (600-1½)	1700-2 638 (700-2)

# RNAV (GPS)-A

SE-4, 26 APR 2018 to 24 MAY 2018

SE-4, 26 APR 2018 to 24 MAY 2018