

APP CRS 263°	Rwy Idg 3780
	TDZE 632
	Apt Elev 634

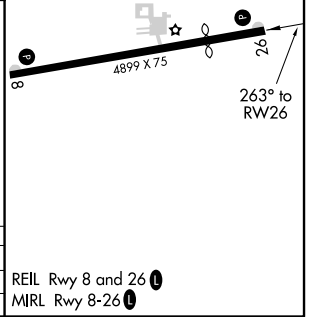
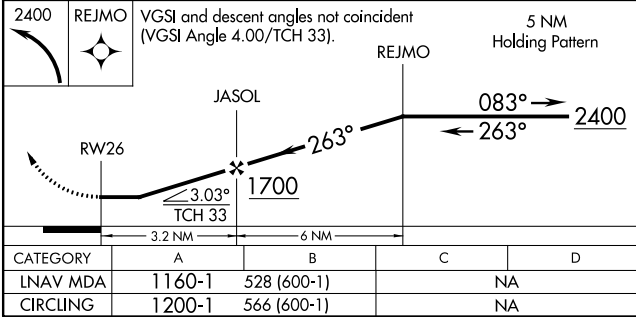
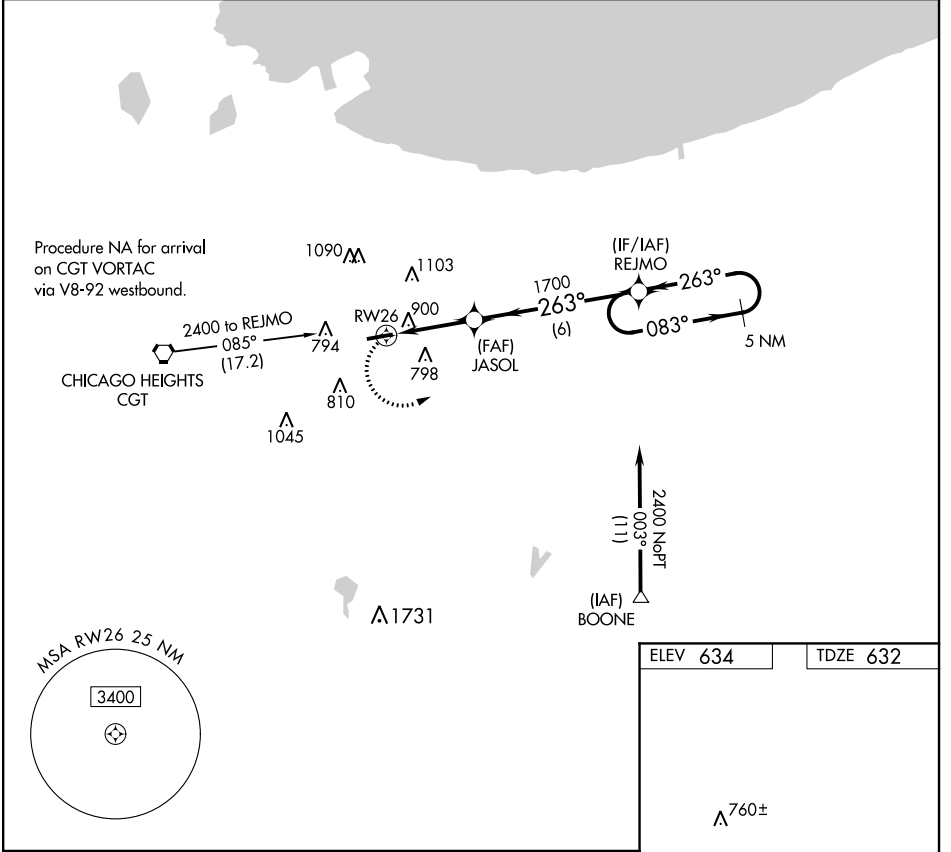
RNAV (GPS) RWY 26

Griffith-Merrillville (Ø5C)

NA DME/DME RNP -0.3 NA. Obtain local altimeter setting on CTAF; when not received use Chicago Midway Intl altimeter setting and increase all MDAs 60 feet. Visibility reduction by helicopters NA.

MISSED APPROACH: Climbing left turn to 2400 direct REJMO and hold.

CHICAGO APP CON 133.1 285.6	UNICOM 123.0 (CTAF) 0
---------------------------------------	---------------------------------



EC-2, 26 APR 2018 to 24 MAY 2018

EC-2, 26 APR 2018 to 24 MAY 2018