

WAAS CH <b>66035</b> W13A	APP CRS <b>129°</b>	Rwy Idg <b>4003</b> TDZE <b>564</b> Apt Elev <b>585</b>
---------------------------------	------------------------	---

# RNAV (GPS) RWY 13

MARSHALL COUNTY (C75)

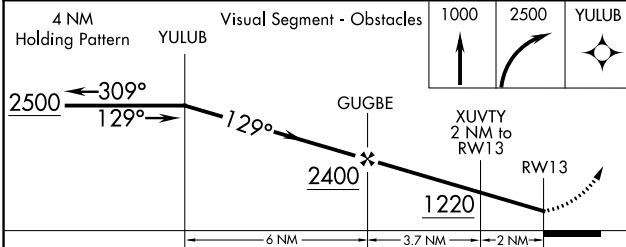
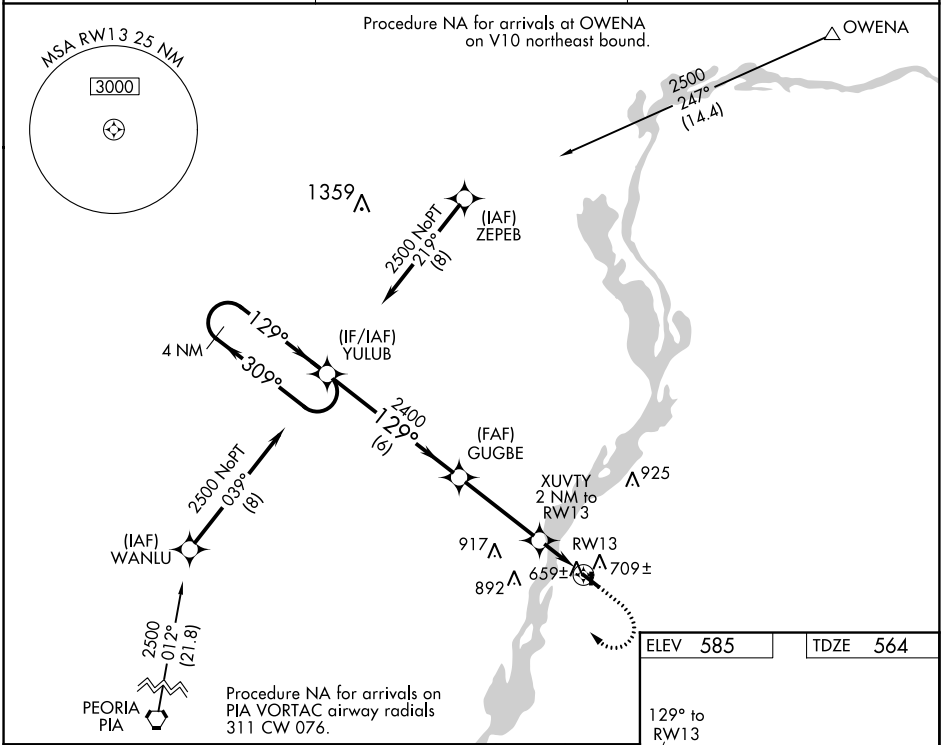
**⚠** DME/DME RNP-0.3 NA. Helicopter visibility reduction below ¾ SM NA. When local altimeter setting not received, use Peru altimeter setting and increase all MDA 80 feet and increase LP and Circling Cat C visibilities ¼ mile and LNAV Cat C visibility ½ mile. Night landing: Rwy 18, 31, 36 NA.

**MISSED APPROACH:** Climb to 1000 then climbing right turn to 2500 direct YULUB and hold.

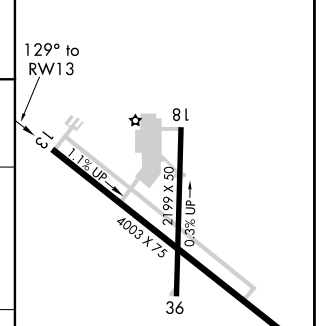
AWOS-3  
**119.425**

CHICAGO CENTER  
**124.55 398.9**

UNICOM  
**122.8 (CTAF) ①**



ELEV 585	TDZE 564
----------	----------



CATEGORY	A	B	C	D
LP MDA	920-1	356 (400-1)	920-1½ 356 (400-1½)	NA
LNAV MDA	960-1	396 (400-1)	960-1¼ 396 (400-1¼)	NA
<b>C</b> CIRCLING	1100-1	515 (600-1)	1200-1¾ 615 (700-1¾)	NA

REIL Rwy 13 ①  
MIRL Rwy 13-31 ①  
LIRL Rwy 18-36

EC-3: 26 APR 2018 to 24 MAY 2018

EC-3: 26 APR 2018 to 24 MAY 2018