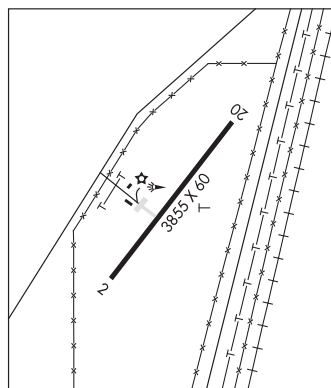


**SALINA-GUNNISON** (44U) 5 NE UTC-7(-6DT) N39°01.75' W111°50.30'  
 5159 B NOTAM FILE CDC  
**RWY 02-20:** H3855X60 (ASPH) S-6 MIRL 0.7% up N  
**SERVICE:** LGT ACTIVATE MIRL Rwy 02-20—CTAF.  
**AIRPORT REMARKS:** Unattended.  
**AIRPORT MANAGER:** (435) 979-9234  
**COMMUNICATIONS:** CTAF 122.9  
**RADIO AIDS TO NAVIGATION:** NOTAM FILE CDC.  
**DELTA (H) VORTACW** 116.1 DTA Chan 108 N39°18.13'  
 W112°30.33' 102° 35.2 NM to fld. 4642/16E.  
 VOR portion unusable  
 045°-090° byd 25 NM blo 10,700'

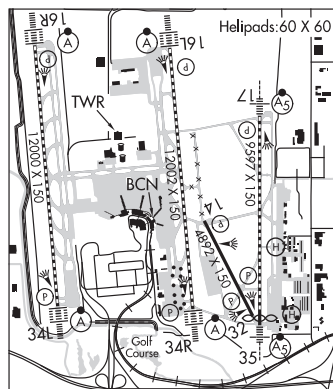
**LAS VEGAS**  
**L-9C**



**SALT LAKE CITY**

**SALT LAKE CITY INTL** (SLC)(KSLC) P (ANG) 3 W UTC-7(-6DT) N40°47.30' W111°58.67'  
 4227 B LRA Class I, ARFF Index E NOTAM FILE SLC  
**RWY 16L-34R:** H12002X150 (ASPH-GRVD) S-60, D-200, 2S-175, 2D-350, 2D/2D2-850 HIRL CL  
**RWY 16L:** ALSF2. TDZL. PAPI(P4L)—GA 3.0° TCH 70'. RVR-TMR  
**RWY 34R:** ALSF2. TDZL. PAPI(P4L)—GA 3.0° TCH 73'. RVR-TMR  
**RWY 16R-34L:** H12000X150 (CONC-GRVD) S-60, D-200, 2S-175, 2D-350, 2D/2D2-850 HIRL CL  
**RWY 16R:** ALSF2. TDZL. PAPI(P4L)—GA 3.0° TCH 73'. RVR-TMR  
**RWY 34L:** ALSF2. TDZL. PAPI(P4L)—GA 3.0° TCH 73'. RVR-TMR  
**RWY 17-35:** H9597X150 (ASPH-GRVD) S-60, D-200, 2S-175, 2D-350, 2D/2D2-850 HIRL CL  
**RWY 17:** MALSR. TDZL. PAPI(P4R)—GA 3.0° TCH 76'. RVR-TR  
**RWY 35:** MALSR. TDZL. PAPI(P4L)—GA 3.0° TCH 74'. RVR-TR Thld dsplcd 324'. Antenna.  
**RWY 14-32:** H4892X150 (ASPH-GRVD) S-60, D-200, 2D-350, 2D/2D2-850 HIRL  
**RWY 14:** PAPI(P4L)—GA 3.0° TCH 40'.  
**RWY 32:** PAPI(P4L)—GA 3.0° TCH 41'.

**SALT LAKE CITY**  
**H-3D, L-9C, 11D**  
**IAP, AD**



**RUNWAY DECLARED DISTANCE INFORMATION**

**RWY 14:** TORA-4892 TODA-4892 ASDA-4892 LDA-4892  
**RWY 16L:** TORA-12002 TODA-12002 ASDA-12002 LDA-12002  
**RWY 16R:** TORA-12000 TODA-12000 ASDA-12000 LDA-12000  
**RWY 17:** TORA-9597 TODA-9597 ASDA-9597 LDA-9597  
**RWY 32:** TORA-4892 TODA-4892 ASDA-4892 LDA-4892  
**RWY 34L:** TORA-12000 TODA-12000 ASDA-12000 LDA-12000  
**RWY 34R:** TORA-12002 TODA-12002 ASDA-12002 LDA-12002  
**RWY 35:** TORA-9597 TODA-9597 ASDA-9597 LDA-9273

**SERVICE:** S4 FUEL 100LL, JET A1+ OX 1, 2, 3, 4 MILITARY— JASU (MD-3M) (MA-1A) (M32A-60A) FUEL A++ avbl at ANG. (NC-100LL, A1+) FLUID LPOX OIL O-148(Mil)

**AIRPORT REMARKS:** Attended continuously. Flocks of birds on and in/ov arpt. Rwy 14-32 taxi ops only blo 1,200' RVR. Rwy 14-32 CLOSED blo 1200' RVR. Due to tfc volume, lcl dep and arr ops are discouraged and delays can be expd btn 1700-1900Z and 0300-0600Z. Rwy 16L de-ice pad 131.975. Rwy 34L de-ice pad 128.975. Rwy 34R de-ice pad 129.975. Twy L de-ice pad 131.975. See current NOTAMs for dates and additional info. Rwy 16L runup area CLOSED permanently. Twy Y rstd to wingspans less than 171' between Twy H3 and Twy H4. Access to D concourse even numbered gates and E concourse, through spots 20 and 21 only. Special VFR is not recommended at the arpt, if req, exp delays. Use caution for extv paragliding ops in/ov point of the mountain. ASDE-X in use. Operate transponders with altitude reporting mode and ADS-B (if equipped) enabled on all airport surfaces. Use minimum thrust in construction areas. Ctc ground on 123.775 before taxiing out of north cargo. Flight Notification Service (ADCUS) avbl. NOTE: See Special Notices—Continuous Power Facilities.

CONTINUED ON NEXT PAGE

## CONTINUED FROM PRECEDING PAGE

**AIRPORT MANAGER:** (801) 575-2408

**WEATHER DATA SOURCES:** ASOS (801) 328-3567 TDWR.

**COMMUNICATIONS:** D-ATIS 125.625 124.75 801-325-9749 UNICOM 122.95

RCO 122.4 (CEDAR CITY RADIO)

Ⓡ **SALT LAKE CITY APP CON** 120.9 (South of 41° latitude blo 8000') 121.1 (North of 41° latitude blo 8000') 124.3 (110°-160° abv 8,000') 124.9 (300°-340° abv 8000') 128.1 (160°-250° abv 8000') 135.5 (340°-110° abv 8000')

Ⓡ **SALT LAKE CITY DEP CON** 120.9 (South of 41° latitude blo 8000') 121.1 (North of 41° latitude blo 8000') 124.3 (110°-160° abv 8,000') 126.25 (250°-300° abv 8000') 128.1 (160°-250° abv 8000') 135.5 (340°-110° abv 8000')

**TOWER** 118.3 (Rwy 17-35 and Rwy 14-32) 119.05 (Rwy 16L-34R) 132.65 (Rwy 16R-34L)

**GND CON** 121.9 (Rwy 17-35 and Rwy 14-32) 123.775 (Rwy 16R-34L and Rwy 16L-34R) **CLNC DEL** 127.3

**PRE-TAXI CLNC** 127.3 **PRE-DEP CLNC** 127.3

**CPDLC** (LOGON KUSA)

**AIRSPACE:** CLASS B See VFR Terminal Area Chart

**VOR TEST FACILITY (VOT)** 111.0

**RADIO AIDS TO NAVIGATION:** NOTAM FILE SLC.

**WASATCH (H) VORTACW** 116.8 TCH Chan 115 N40°51.02' W111°58.91' 161° 3.7 NM to fld. 4220/16E.

VOR portion unusable:

015°-030° blo 26,000'

030°-050° byd 20 NM

050°-085° byd 20 NM blo 18,000'

085°-125° byd 30 NM blo 15,000'

360°-015° byd 20 NM blo 17,000'

DME unusable:

030°-080° byd 17 NM blo 17,000'

030°-080° byd 25 NM

080°-140° byd 17 NM blo 15,000'

080°-140° byd 25 NM

TACAN AZIMUTH unusable:

030°-140°

TACAN AZIMUTH & DME unusable:

185°-220° byd 25 NM blo 16,000'

260°-290° byd 25 NM blo 11,000'

350°-360° byd 30 NM blo 16,000'

360°-030° byd 17 NM blo 16,000'

360°-030° byd 30 NM

**ILS/DME** 109.5 I-MOY Chan 32 Rwy 16L. DME also serves ILS Rwy 34R.

**ILS/DME** 111.9 I-UAT Chan 56 Rwy 16R. Class IIIE. DME also serves ILS Rwy 34L.

**ILS/DME** 111.5 I-BNT Chan 52 Rwy 17. Class - IE. DME also serves ILS Rwy 35.

**ILS/DME** 111.9 I-UUH Chan 56 Rwy 34L. Class IIIE. DME also serves ILS Rwy 16R.

**ILS/DME** 109.5 I-SLC Chan 32 Rwy 34R. Class IIIE. DME also serves ILS Rwy 16L.

**ILS/DME** 111.5 I-U7J Chan 52 Rwy 35.

• • • • •  
**HELIPAD HB:** H60X60 (ASPH)

**HELIPAD HF:** H60X60 (ASPH)

**HELIPORT REMARKS:** Helipads B and F lctd on general aviation aprons. Lgttd pole 51' AGL 383' ESE of Helipad B. Effective Mar 2016 Rwy 16L departures from H12 distance remaining 11439'.