

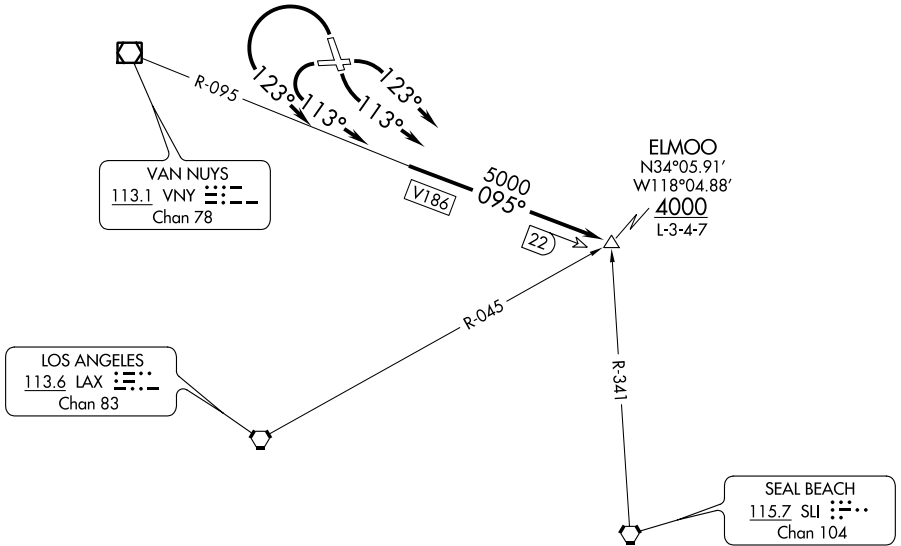
# ELMOO EIGHT DEPARTURE

AL-67 (FAA)

BOB HOPE (BUR)  
BURBANK, CALIFORNIA

CLNC DEL  
118.0 348.6  
CPDLC  
SOCAL DEP CON  
135.05 317.5

**TOP ALTITUDE:  
ASSIGNED BY ATC**



### TAKEOFF MINIMUMS

- Rwy 8: Standard with minimum climb of 225' per NM to 2500.
- Rwy 15: Standard with minimum climb of 450' per NM to 3000.
- Rwy 26: Standard with minimum climb of 305' per NM to 2600.
- Rwy 33: Standard with minimum climb of 550' per NM to 2600 or 600-2¼ with minimum climb of 210' per NM to 4000.

NOTE: Chart not to scale.

### DEPARTURE ROUTE DESCRIPTION

- TAKEOFF RUNWAY 8: Climbing right turn heading 123° intercept VNY R-095 to ELMOO. . . .
- TAKEOFF RUNWAY 15: Climbing left turn heading 113° intercept VNY R-095 to ELMOO. . . .
- TAKEOFF RUNWAY 26: Climbing left turn heading 113° intercept VNY R-095 to ELMOO. . . .
- TAKEOFF RUNWAY 33: Climbing left turn heading 123° intercept VNY R-095 to ELMOO. . . .

. . . .thence via assigned route.

SW-3, 24 MAY 2018 to 21 JUN 2018

SW-3, 24 MAY 2018 to 21 JUN 2018