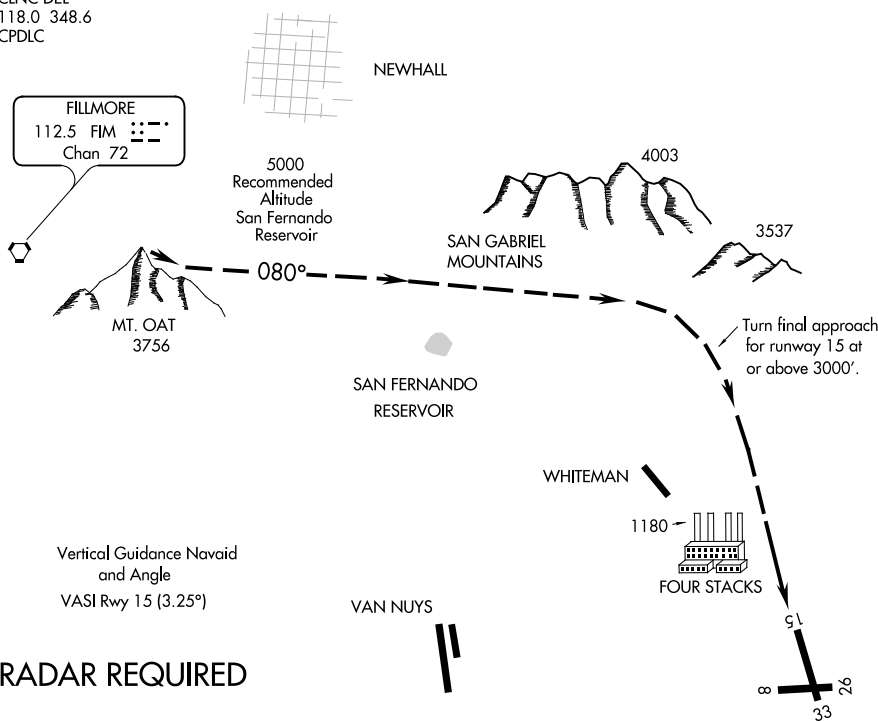


FOUR STACKS VISUAL RWY 15

BOB HOPE (BUR)
BURBANK, CALIFORNIA

D-ATIS 134.5
SOCAL APP CON
134.2 338.2
BURBANK TOWER
118.7 254.3
GND CON
123.9 348.6
CLNC DEL
118.0 348.6
CPDLC



Vertical Guidance Navaid
and Angle
VASI Rwy 15 (3.25°)

RADAR REQUIRED

Weather Minimums: 5500 feet ceiling
and 5 mile visibility.

1	2	3	4	5	6	7	8	9	10	11	12	13	14	15	16
---	---	---	---	---	---	---	---	---	----	----	----	----	----	----	----

FOUR STACKS VISUAL APPROACH RWY 15

When Visual Approaches to Runway 15 are in progress, clearances will be given to aircraft from the Northwest thru Northeast utilizing the following phraseology:

"(IDENT) CLEARED FOR FOUR STACKS VISUAL APPROACH TO RUNWAY 15."

FOUR STACKS VISUAL RWY 15

34°12'N-118°22'W

BURBANK, CALIFORNIA
BOB HOPE (BUR)