


ILS Y or LOC Y RWY 8

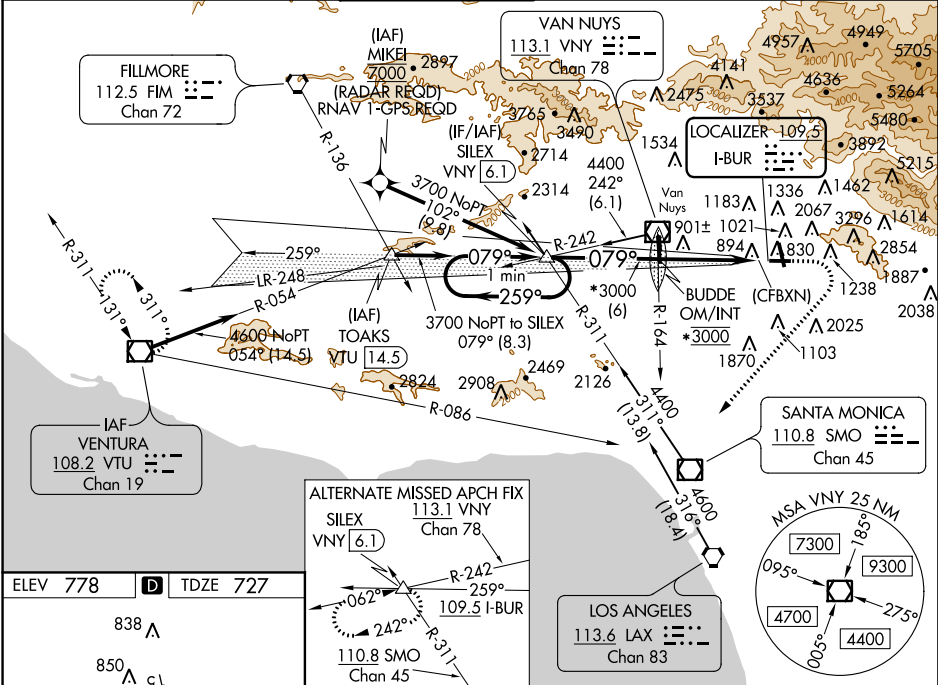
BOB HOPE (BUR)

LOC I-BUR 109.5	APP CRS 079°	Rwy Idg TDZE Apt Elev 5801 727 778
---------------------------	------------------------	------------------------------------------------------------

▼ Circling Rwy 26 NA at night. Autopilot coupled approach NA below 1027.
▲ Localizer unusable within 0.5 NM to thld. Straight-in Rwy 8 at night, Circling Rwy 33 at night, operational VGSJ required. Remain on or above VGSJ glidepath until threshold. Circling NA for Cats A/B/C northeast of Rwy 15 and 26. Circling NA for Cat D east of Rwy 15-33. For inop ALS, increase S-ILS 8 all Cats visibility to 3 SM and S-LOC 8 Cats A/B visibility to RVR 6000. Rwy 8 helicopter visibility reduction below RVR 5000 NA.

MALSRS

 MISSED APPROACH: Climb to 1800 then climbing right turn to 4600 on heading 210° and VTU VOR/DME R-086 to VTU VOR/DME and hold.

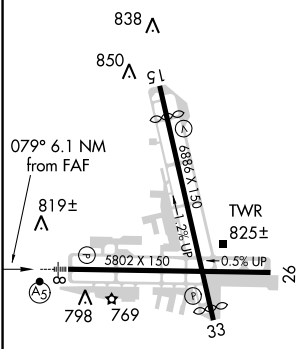
D-ATIS 134.5	SOCAL APP CON 134.2 338.2	BURBANK TOWER 118.7 254.3	GND CON 123.9 348.6	CLNC DEL 118.0 348.6	CPDLC
------------------------	-------------------------------------	-------------------------------------	-------------------------------	--------------------------------	-------



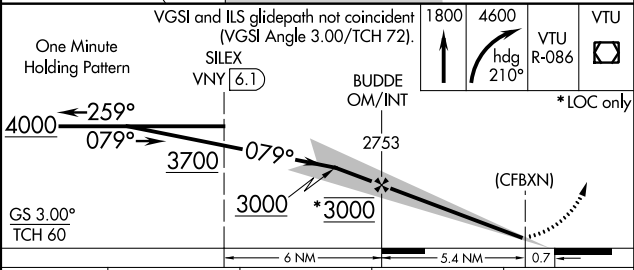
SW-3, 24 MAY 2018 to 21 JUN 2018

SW-3, 24 MAY 2018 to 21 JUN 2018

ELEV 778	D	TDZE 727
----------	----------	----------



MIRL Rwy 15-33	HIRL Rwy 8-26	REIL Rws 15, 26 and 33			
FAF to MAP 5.4 NM					
Knots	60	90	120	150	180
Min:Sec	5:24	3:36	2:42	2:10	1:48



CATEGORY	A	B	C	D
S-ILS 8		1555-2½	828 (800-2½)	
S-LOC 8	1620/50	893 (900-1)	1620-2	893 (900-2)
C CIRCLING	1620-1¼ 842 (900-1¼)	1640-1¼ 862 (900-1¼)	2240-3 1462 (1500-3)	2320-3 1542 (1600-3)

ILS Y or LOC Y RWY 8

BOB HOPE (BUR)