

APP CRS 124°	Rwy Idg TDZE Apt Elev	N/A N/A 778
------------------------	-----------------------------	--

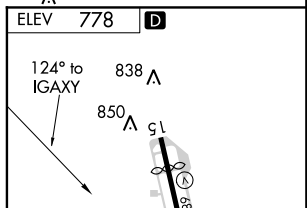
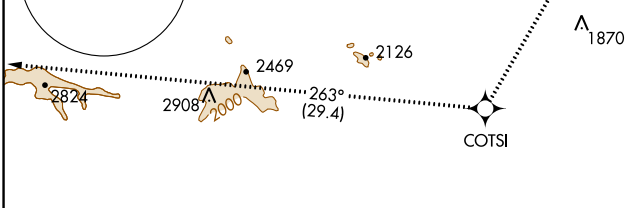
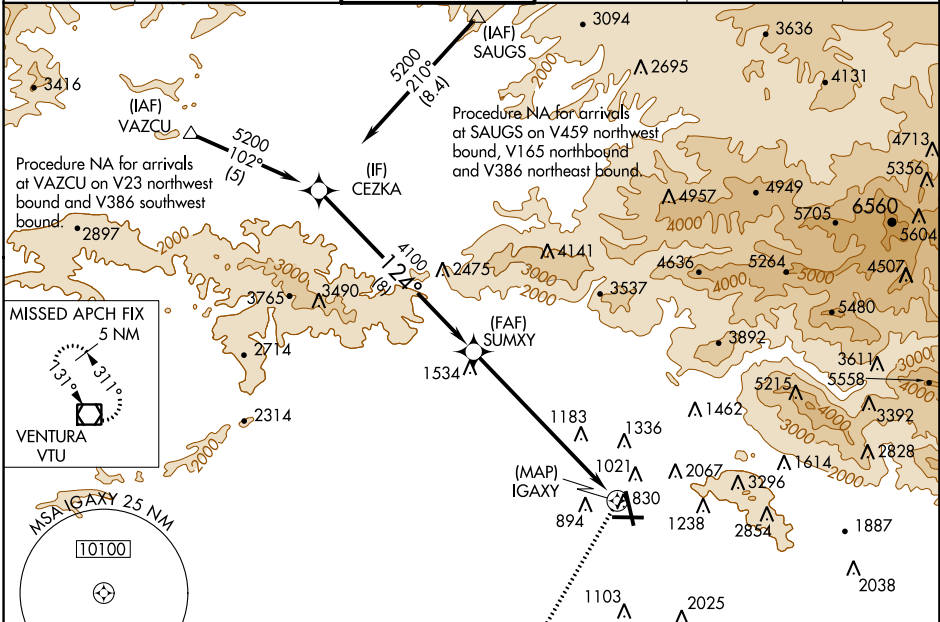
RNAV (GPS)-A

BOB HOPE (BUR)

▽ DME/DME RNP-0.3 NA. Circling NA for Cats A/B/C northeast of Rws 15 and 26.
▲ Circling NA for Cat D east of Rwy 15-33. Helicopter visibility reduction below 1 SM NA. Night landing Rwy 26 NA. Night landing: Rwy 8, 33 operational VGSJ required. Remain on or above VGSJ glidepath until threshold.

MISSED APPROACH: Climbing right turn 4600 direct COTSI on track 263° to VTU VOR/DME and hold.

D-ATIS 134.5	SOCAL APP CON 134.2 338.2	BURBANK TOWER 118.7 254.3	GND CON 123.9 348.6	CLNC DEL 118.0 348.6	CPDLC
------------------------	-------------------------------------	-------------------------------------	-------------------------------	--------------------------------	-------



CEZKA	4600	COTSI	tr 263°	VTU
5200		4100		
	8 NM	7.4 NM		

CATEGORY	A	B	C	D
C CIRCLING	1640-1¼	862 (900-1¼)	2240-3 1462 (1500-3)	2320-3 1542 (1600-3)

ELEV 778 **D**

MIRL Rwy 15-33
 HIRL Rwy 8-26
 REIL Rws 15, 26 and 33

SW-3, 24 MAY 2018 to 21 JUN 2018

SW-3, 24 MAY 2018 to 21 JUN 2018