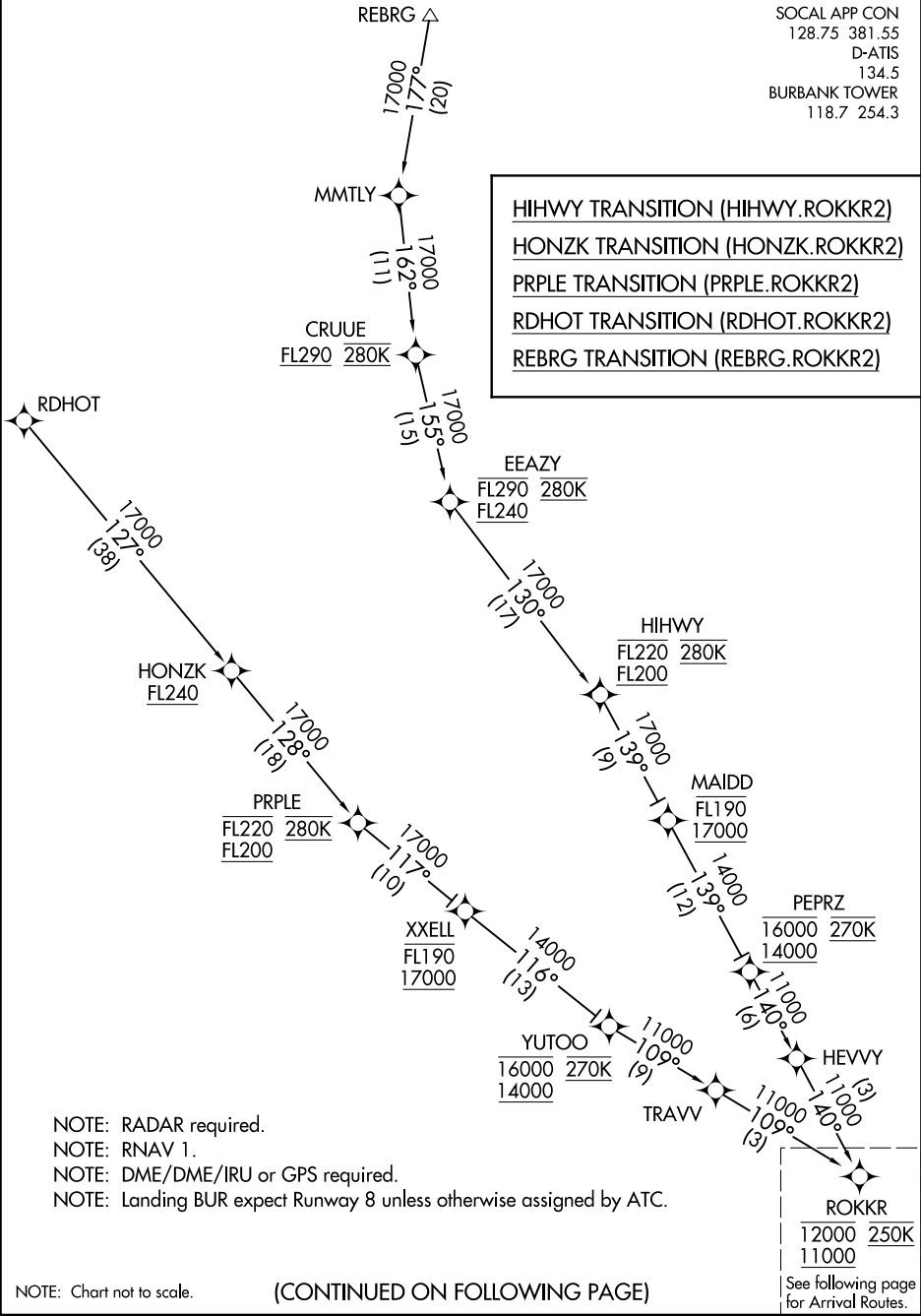


SOCAL APP CON
128.75 381.55
D-ATIS
134.5
BURBANK TOWER
118.7 254.3

- HIHWY TRANSITION (HIHWY.ROKKR2)
- HONZK TRANSITION (HONZK.ROKKR2)
- PRPLE TRANSITION (PRPLE.ROKKR2)
- RDHOT TRANSITION (RDHOT.ROKKR2)
- REBRG TRANSITION (REBRG.ROKKR2)



SW-3, 24 MAY 2018 to 21 JUN 2018

SW-3, 24 MAY 2018 to 21 JUN 2018

- NOTE: RADAR required.
- NOTE: RNAV 1.
- NOTE: DME/DME/IRU or GPS required.
- NOTE: Landing BUR expect Runway 8 unless otherwise assigned by ATC.

NOTE: Chart not to scale.

(CONTINUED ON FOLLOWING PAGE)

ROKKR
12000 250K
11000

See following page for Arrival Routes.