


APP CRS	Rwy Idg	5801
079°	TDZE	727
	Apt Elev	778

RNAV (RNP) Y RWY 8

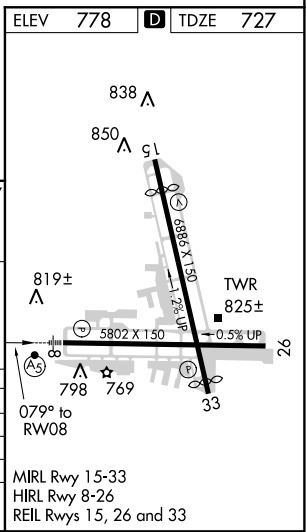
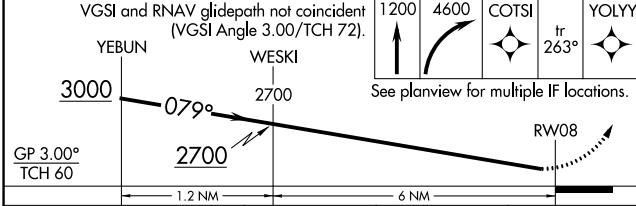
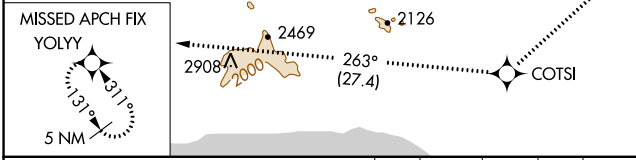
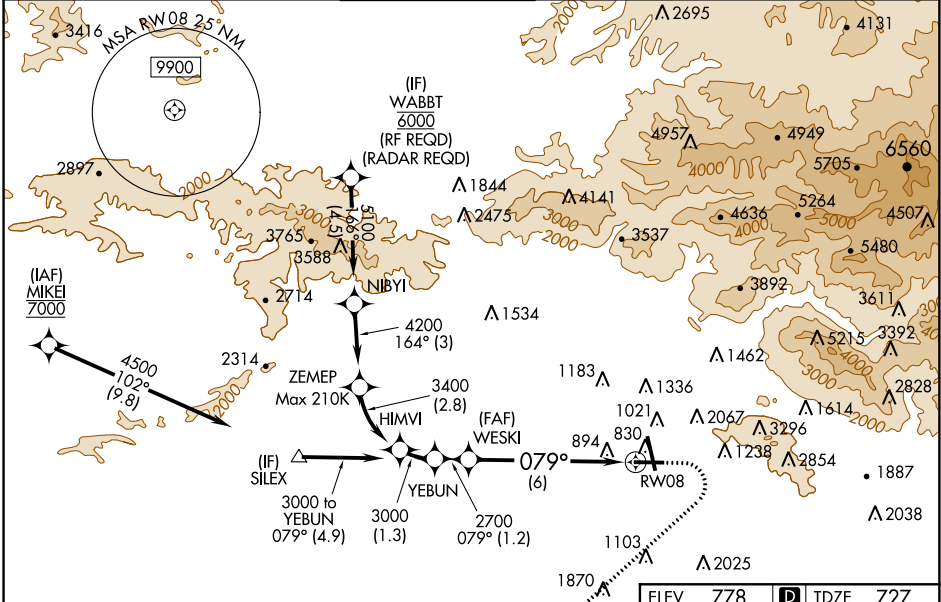
BOB HOPE (BUR)

⚠ Inop table does not apply to RNP 0.20* all Cats.
⚠ For uncompensated Baro-VNAV systems, procedure NA below 1°C (34°F) or above 54°C (130°F).
 GPS required. When Circling to Rwy 8 at night, operational VGSI required, remain on or above VGSI glidepath until threshold. For inop MALS/R, increase RNP 0.30# all Cats visibility to 1/2 SM.

MALS/R


MISSED APPROACH: Climb to 1200 then climbing right turn to 4600 direct COTS/1 and on track 263° to YOLYY and hold.
 *Missed approach requires minimum climb of 340 feet per NM to 2400.
 # Missed approach requires minimum climb of 317 feet per NM to 2400.

D-ATIS	SOCAL APP CON	BURBANK TOWER	GND CON	CLNC DEL	CPDLC
134.5	134.2 338.2	118.7 254.3	123.9 348.6	118.0 348.6	



CATEGORY	A	B	C	D
RNP 0.20 DA*		1055/50	328 (300-1)	
RNP 0.30 DA#		1151/50	424 (400-1)	
RNP 0.30 DA		1485-2½	758 (800-2½)	

AUTHORIZATION REQUIRED

SW-3, 24 MAY 2018 to 21 JUN 2018

SW-3, 24 MAY 2018 to 21 JUN 2018