

VOR/DME VNY	APP CRS	Rwy Idg	5801
113.1	089°	TDZE	727
Chan 78		Apt Elev	778

VOR RWY 8

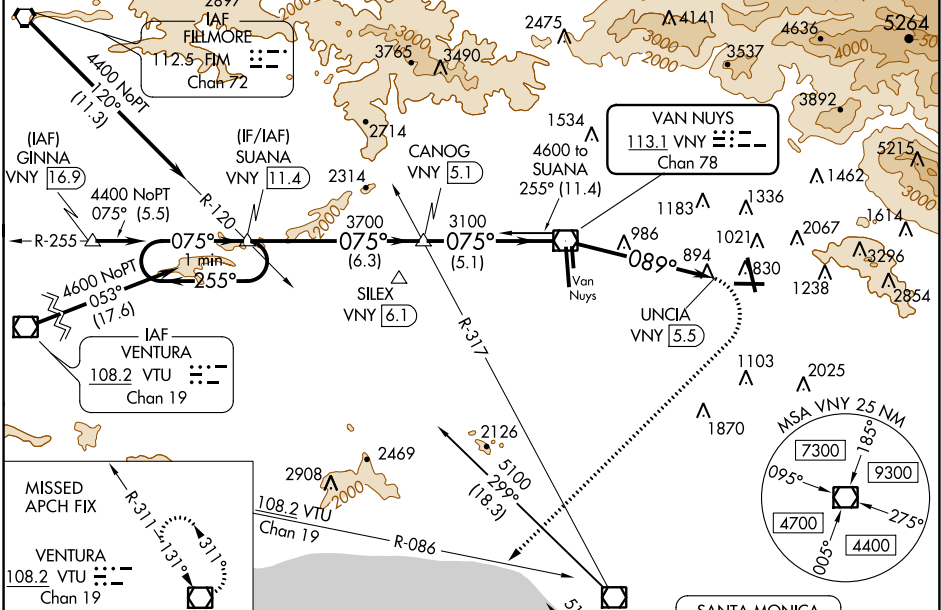
BOB HOPE (BUR)

⚠ Inop table does not apply. Helicopter visibility reduction below 1 SM NA. Circling NA for Cats A/B/C northeast of Rwy 15 and 26. Circling NA for Cat D east of Rwy 15-33. Night landing: Rwy 26 NA. Night landing: Rwy 8, 33 operational VGSJ required. Remain on or above VGSJ glidepath until threshold.

MALS  MISSED APPROACH: Climbing right turn to 4600 on heading 210° and VTU VOR/DME R-086 to VTU VOR/DME and hold.

D-ATIS	SOCAL APP CON	BURBANK TOWER	GND CON	CLNC DEL	CPDLC
134.5	134.2 338.2	118.7 254.3	123.9 348.6	118.0 348.6	

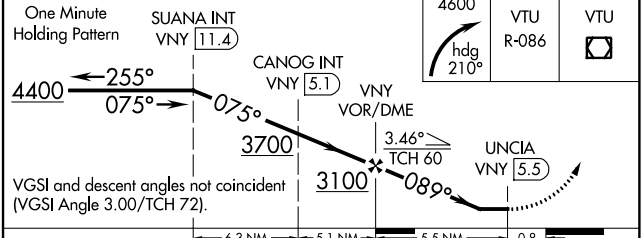
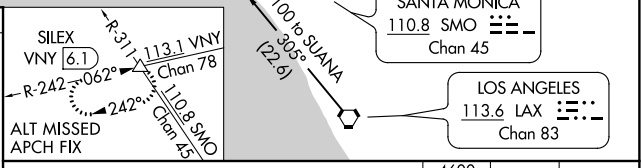
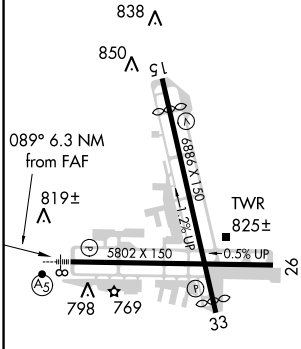
Procedure NA for arrivals at FIM VORTAC airway radials 087 CW 148.



SW-3, 24 MAY 2018 to 21 JUN 2018

SW-3, 24 MAY 2018 to 21 JUN 2018

ELEV 778	D	TDZE 727
----------	----------	----------



MIRL Rwy 15-33	HIRL Rwy 8-26	REIL Rwys 15, 26 and 33			
FAF to MAP 5.5 NM					
Knots	60	90	120	150	180
Min:Sec	5:30	3:40	2:45	2:12	1:50

CATEGORY	A	B	C	D
S-8	1600/55 873 (900-1¼)	1600/60 873 (900-1¼)	1600-2½	873 (900-2½)
C CIRCLING	1600-1¼ 822 (900-1¼)	1640-1¼ 862 (900-1¼)	2240-3 1462 (1500-3)	2320-3 1542 (1600-3)