

SW-3, 24 MAY 2018 to 21 JUN 2018

DEPARTURE ROUTE DESCRIPTION

**TAKEOFF RUNWAY 12:** Climb heading 121° to 600, then on heading 121° or as assigned by ATC, expect vectors to FRITR, then on track 076° to DOTSS, thence. . . .

**TAKEOFF RUNWAY 25R:** Climb heading 256° to 580, then on heading 180° or as assigned by ATC, expect vectors to FRITR, then on track 076° to DOTSS, thence. . . .

**TAKEOFF RUNWAY 30:** Climb heading 301° to 1500, then left turn heading 180° or as assigned by ATC, expect vectors to FRITR, then on track 076° to DOTSS, thence. . . .

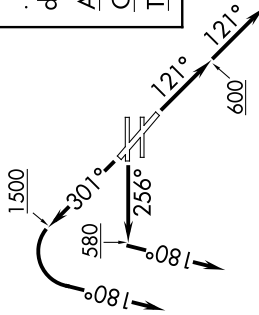
. . . on (transition). Maintain 17000. Expect filed altitude 10 minutes after departure.

AVRRY TRANSITION (FRITR1.AVRRY)

CNERY TRANSITION (FRITR1.CNERY)

TCATE TRANSITION (FRITR1.TCATE)

- ATIS 127.75
- CINC DEL 118.15
- GND CON 133.0 257.6
- LONG BEACH TOWER\* 120.5 257.6 (Rwy 12)
- 119.4 257.6 (Rwy 30)
- SOCAL DEP CON 125.35 316.125 (Rwy 12)
- 127.2 269.6 (Rwys 25R, 30)



TOP ALTITUDE: 17000

TAKEOFF MINIMUMS

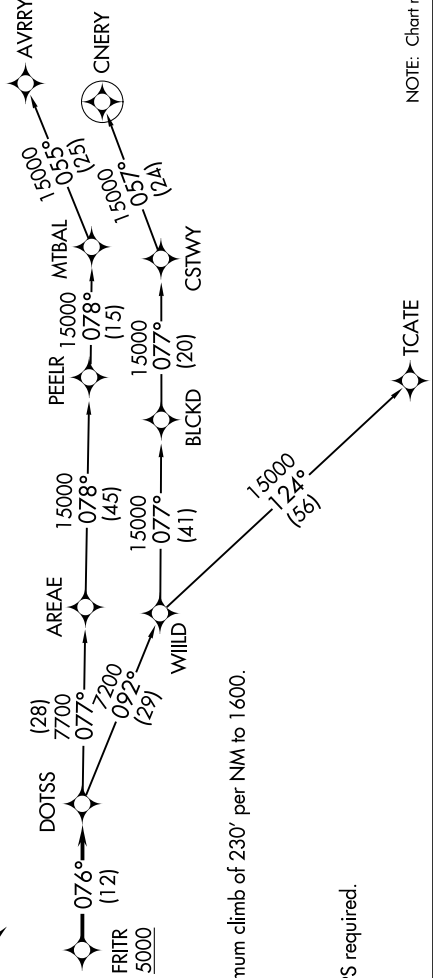
Rwy 25R: Standard with minimum climb of 230' per NM to 1600.  
 Rwys 12, 30: Standard.

NOTE: RADAR required.

NOTE: RNAV 1.

NOTE: DME/DME/IRU or GPS required.

NOTE: Turbojet aircraft only.



NOTE: Chart not to scale.

SW-3, 24 MAY 2018 to 21 JUN 2018