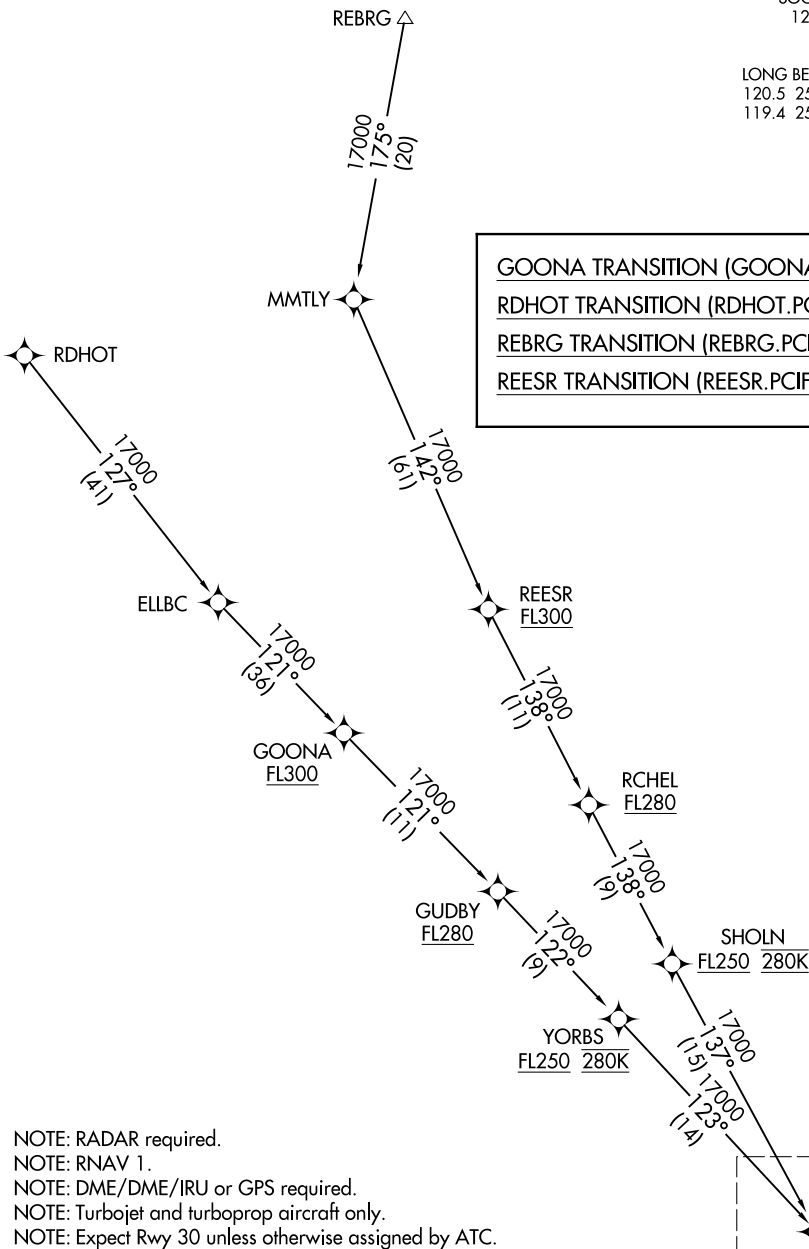


PCIFC ONE ARRIVAL (RNAV) Transition Routes

LONG BEACH, CALIFORNIA

SOCAL APP CON  
127.4 263.025  
ATIS  
127.75  
LONG BEACH TOWER ★  
120.5 257.6 (Rwy 12)  
119.4 257.6 (Rwy 30)

GOONA TRANSITION (GOONA.PCIFC1)  
RDHOT TRANSITION (RDHOT.PCIFC1)  
REBRG TRANSITION (REBRG.PCIFC1)  
REESR TRANSITION (REESR.PCIFC1)



NOTE: RADAR required.  
NOTE: RNAV 1.  
NOTE: DME/DME/IRU or GPS required.  
NOTE: Turbojet and turboprop aircraft only.  
NOTE: Expect Rwy 30 unless otherwise assigned by ATC.

(CONTINUED ON FOLLOWING PAGE)

NOTE: Chart not to scale.

See following page  
for Arrival Routes.

SW-3, 24 MAY 2018 to 21 JUN 2018

SW-3, 24 MAY 2018 to 21 JUN 2018