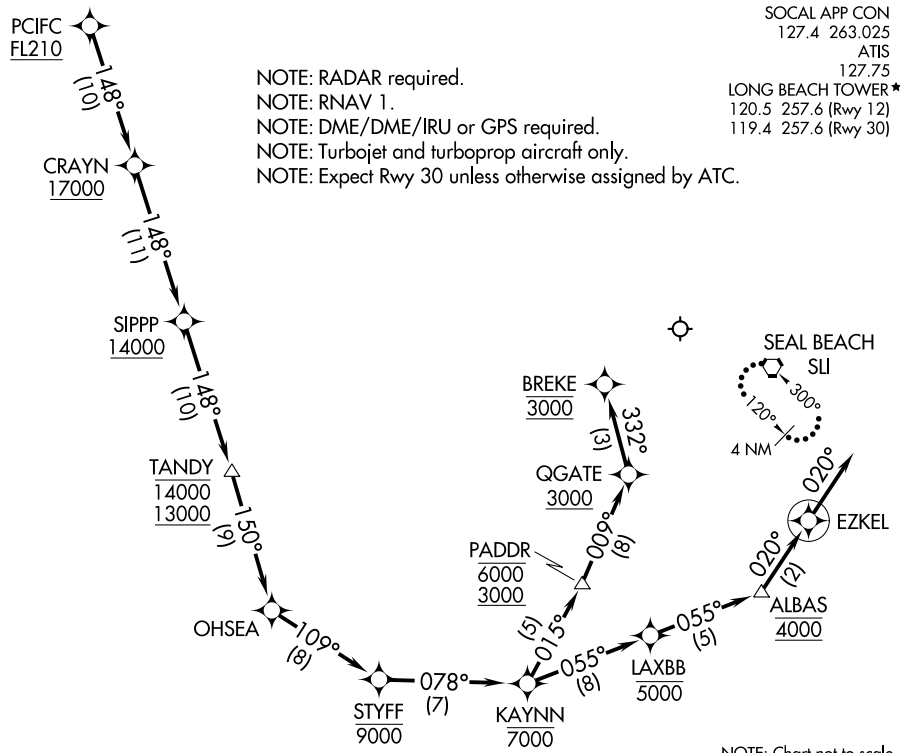


# PCIFC ONE ARRIVAL (RNAV) Arrival Routes



NOTE: RADAR required.  
 NOTE: RNAV 1.  
 NOTE: DME/DME/IRU or GPS required.  
 NOTE: Turbojet and turboprop aircraft only.  
 NOTE: Expect Rwy 30 unless otherwise assigned by ATC.

SOCAL APP CON  
 127.4 263.025  
 ATIS  
 127.75  
 LONG BEACH TOWER\*  
 120.5 257.6 (Rwy 12)  
 119.4 257.6 (Rwy 30)

NOTE: Chart not to scale.

## ARRIVAL ROUTE DESCRIPTION

From PCIFC on track 148° to cross CRAYN at or above 17000, then on track 148° to cross SIPPP at or above 14000, then on track 148° to cross TANDY between 13000 and 14000, then on track 150° to OHSEA, then on track 109° to cross STYFF at or below 9000.

LANDING RUNWAY 12: From STYFF on track 078° to cross KAYNN at or below 7000, then on track 015° to cross PADDR between 3000 and 6000, then on track 009° to cross QGATE at or above 3000, then on track 332° to cross BREKE at 3000. Expect RNAV (RNP) RWY 12 approach.

LANDING RUNWAYS 25R, 30: From STYFF on track 078° to cross KAYNN at or below 7000, then on track 055° to cross LAXBB at or below 5000, then on track 055° to cross ALBAS at 4000, then on track 020° to EZKEL, then on track 020°. Expect RNAV (RNP) Y RWY 30 or RADAR vectors to final approach course.

### LOST COMMUNICATIONS

LANDING RUNWAYS 25R, 30: After ALBAS proceed on the RNAV (RNP) Y RWY 30 or ILS or LOC RWY 30 approach.

LANDING RUNWAY 12: After BREKE proceed on the RNAV (RNP) RWY 12 approach. If unable approach to LGB, after ALBAS/BREKE climb to 4000 direct SLI VORTAC and hold.

SW-3, 24 MAY 2018 to 21 JUN 2018

SW-3, 24 MAY 2018 to 21 JUN 2018