

WAAS CH 99521 W30A	APP CRS 301°	Rwy Idg TDZE Apt Elev	7415 38 60
--	------------------------	-----------------------------	---------------------------------------

RNAV (GPS) Z RWY 30

LONG BEACH/DAUGHERTY FIELD (LGB)

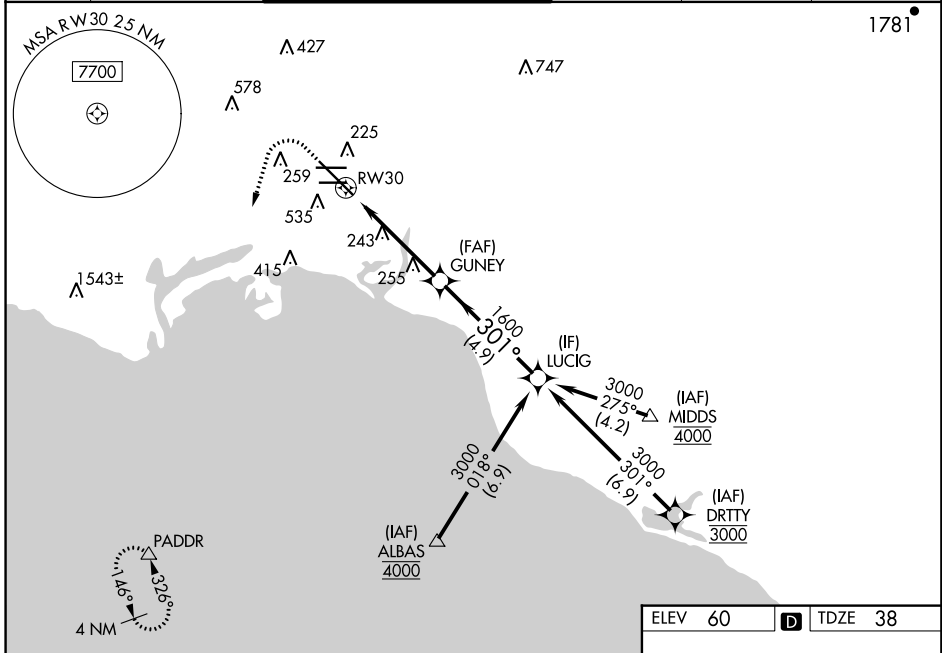
▼ For uncompensated Baro-VNAV systems, LNAV/VNAV NA below 4°C (40°F) or above 54°C (130°F). DME/DME RNP-0.3 NA.
▲ For inop ALS, increase LNAV/VNAV all Cats, and LNAV Cat C and D visibility to 2½ SM.

MALSRR



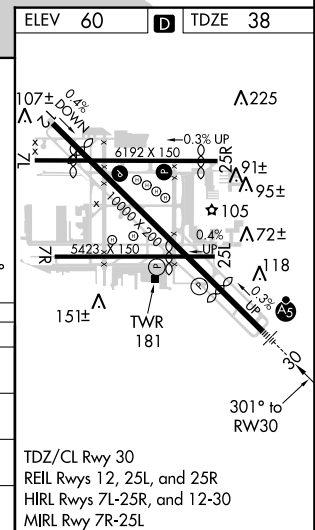
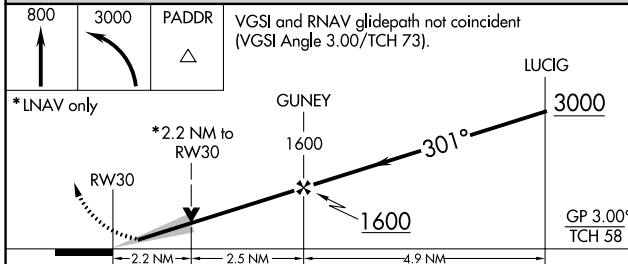
MISSED APPROACH: Climb to 800 then climbing left turn to 3000 direct PADDR and hold

ATIS 127.75	SOCAL APP CON 125.35 316.125	LONG BEACH TOWER* 120.5 257.6 (Rwy 12) 119.4 (CTAF) 257.6 (Rwy 30)	GND CON 133.0 257.6	CLNC DEL 118.15	UNICOM 122.95
-----------------------	--	---	-------------------------------	---------------------------	-------------------------



SW-3, 24 MAY 2018 to 21 JUN 2018

SW-3, 24 MAY 2018 to 21 JUN 2018



CATEGORY	A	B	C	D
LPV DA		260/24	222 (200-½)	
LNAV/VNAV DA		664-1¾	626 (700-1¼)	
LNAV MDA	820/24 782 (800-½)	820/40 782 (800-¾)	820-1¾	782 (800-1¾)
CIRCLING	880-1 820 (900-1)	880-1¼ 820 (900-1¼)	880-2½ 820 (900-2½)	880-2¾ 820 (900-2¾)

TDZ/CL Rwy 30
 REIL Rwys 12, 25L, and 25R
 HIRL Rwys 7L-25R, and 12-30
 MIRL Rwy 7R-25L