

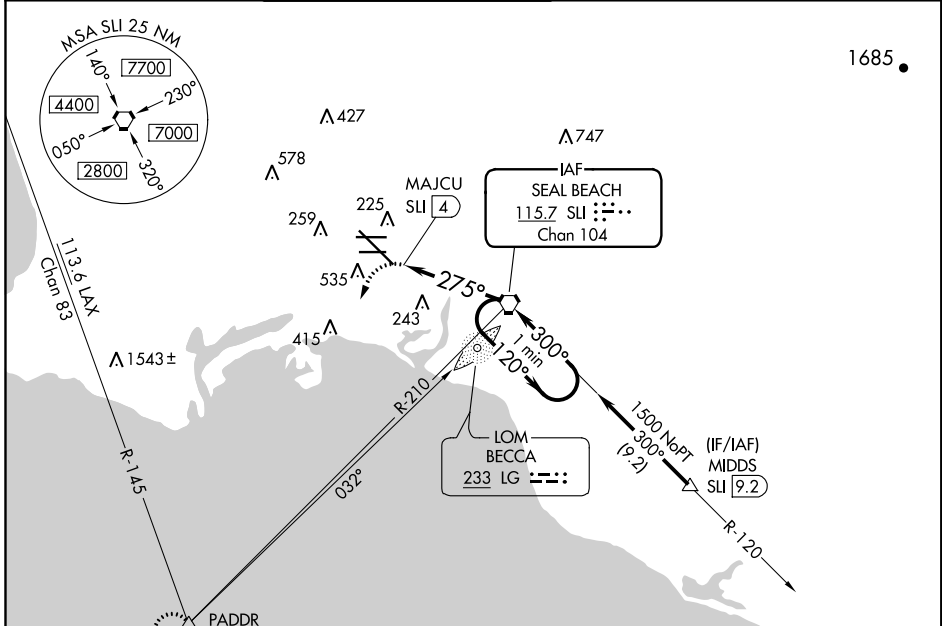
VORTAC SLI <b>115.7</b> Chan <b>104</b>	APP CRS <b>275°</b>	Rwy Idg TDZE <b>38</b> Apt Elev <b>60</b>	<b>7415</b>
---	------------------------	---	-------------

# VOR or TACAN RWY 30

LONG BEACH/DAUGHERTY FIELD (LGB)

<p>Inoperative table does not apply. Visibility reduction by helicopters NA.</p>	<p>MALSR</p>	MISSED APPROACH: Climbing left turn to 2500 via heading 200° and LAX R-145 to PADDR Int/LAX 22 DME and hold.			
		ATIS <b>127.75</b>	SOCAL APP CON <b>125.35 316.125</b>	LONG BEACH TOWER* <b>120.5 257.6</b> (Rwy 12) <b>119.4</b> (CTAF) <b>0 257.6</b> (Rwy 30)	GND CON <b>133.0 257.6</b>

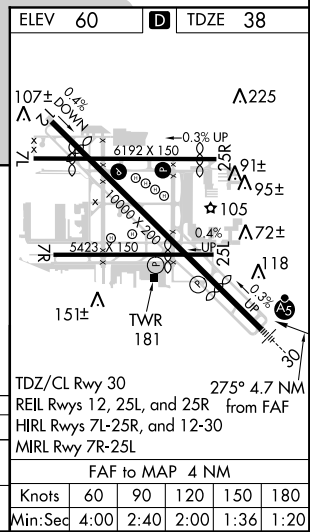
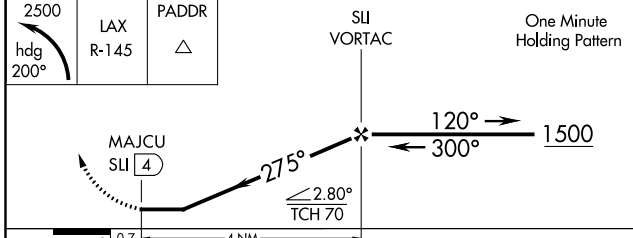
ATIS <b>127.75</b>	SOCAL APP CON <b>125.35 316.125</b>	LONG BEACH TOWER* <b>120.5 257.6</b> (Rwy 12) <b>119.4</b> (CTAF) <b>0 257.6</b> (Rwy 30)	GND CON <b>133.0 257.6</b>	CLNC DEL <b>118.15</b>	UNICOM <b>122.95</b>
-----------------------	--	---	-------------------------------	---------------------------	-------------------------



SW-3, 24 MAY 2018 to 21 JUN 2018

SW-3, 24 MAY 2018 to 21 JUN 2018

ELEV 60	<b>D</b>	TDZE 38
---------	----------	---------



CATEGORY	A	B	C	D
S-30	640/50	602 (600-1)	640-1¾ 602 (600-1¾)	640-2 602 (600-2)
CIRCLING	880-1 820 (900-1)	880-1¼ 820 (900-1¼)	880-2½ 820 (900-2½)	880-2¾ 820 (900-2¾)

TDZ/CL Rwy 30 275° 4.7 NM  
 REIL Rwys 12, 25L, and 25R from FAF  
 HIRL Rwys 7L-25R, and 12-30  
 MRL Rwy 7R-25L

FAF to MAP 4 NM

Knots	60	90	120	150	180
Min:Sec	4:00	2:40	2:00	1:36	1:20