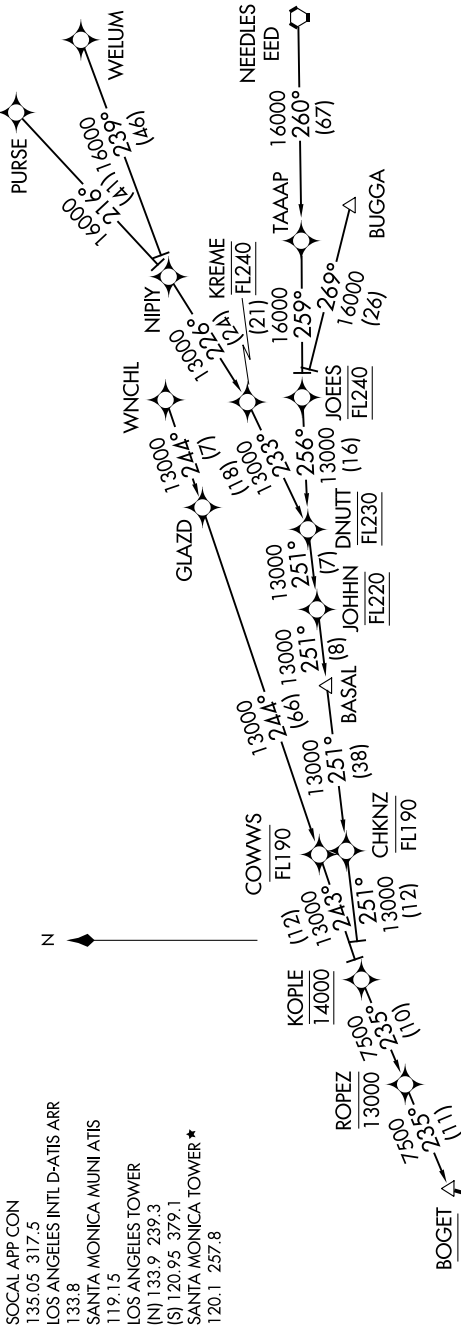


SW-3, 24 MAY 2018 to 21 JUN 2018

SOCAL APP CON
135.05 317.5
LOS ANGELES INTL D-ATIS ARR
133.8
SANTA MONICA MUNI ATIS
119.15
LOS ANGELES TOWER
(N) 133.9 239.3
(S) 120.95 379.1
SANTA MONICA TOWER*
120.1 257.8



NOTE: RADAR required.
 NOTE: RNAV 1.
 NOTE: DME/DME/IRU or GPS required.
 NOTE: Landing LAX expect Rwy 24R unless otherwise assigned by ATC.
 NOTE: Landing SMO expect Rwy 21 unless otherwise assigned by ATC.
 NOTE: This procedure NA for turbojets landing LAX.
 NOTE: KREME transition restricted to KLAS departures only.
 NOTE: WNCHL transition ATC assigned only-do not file.

ARRIVAL ROUTE DESCRIPTION

BUGGA TRANSITION (BUGGA.BOGET1)
NEEDLES TRANSITION (EED.BOGET1)
KREME TRANSITION (KREME.BOGET1)
PURSE TRANSITION (PURSE.BOGET1)
WELUM TRANSITION (WELUM.BOGET1)
WNCHL TRANSITION (WNCHL.BOGET1)

LANDING KLAS/KSMO: From BOGET on track 183° to cross MEETT at or above 7500, then on track 173° to cross WATSS at or above 6900, then on track 157° to cross UPDOC at 6000, then on track 140°. Expect RADAR vectors to final approach course.

NOTE: Chart not to scale.

SW-3, 24 MAY 2018 to 21 JUN 2018