

(CHATY5.CHATY) 17229
CHATY FIVE DEPARTURE

AL-237 (FAA)

LOS ANGELES INTL (LAX)
 LOS ANGELES, CALIFORNIA

SW-3, 24 MAY 2018 to 21 JUN 2018

**TOP ALTITUDE:
 ASSIGNED BY ATC**

D-ATIS DEP 135.65
 CLNC DEL 120.35 327.0
 CPDLC
 GND CON (N) 121.65 327.0
 (S) 121.75 327.0
 (W) 121.4 327.0
 LOS ANGELES TOWER (N) 133.9 239.3
 (S) 120.95 379.1
 SOCIAL DEP CON 124.3 363.2 [045°-224°]
 125.2 263.025 [225°-044°]

GORMAN
 116.1 GMIN
 Chan 108
 N34°48.24'-W118°51.68'
 L-3-4-7, H-4

SAN MARCUS
 114.9 RZS
 Chan 96
 N34°30.57'-W119°46.26'
 L-3-4-7, H-4

FILLMORE
 112.5 FIM
 Chan 72
 N34°21.40'-W118°52.88'

OHIOH
 N34°25.88'
 W119°18.65'
 L-3-4-7

GAVIOTA
 GVO
 Chan 85
 113.8 GVO

KWANG
 N34°18.55'
 W119°30.85'
 L-3-4-7

HENER
 N34°19.86'
 W119°13.66'
 L-3-4-7

JOSUL
 N34°15.45'
 W118°35.45'

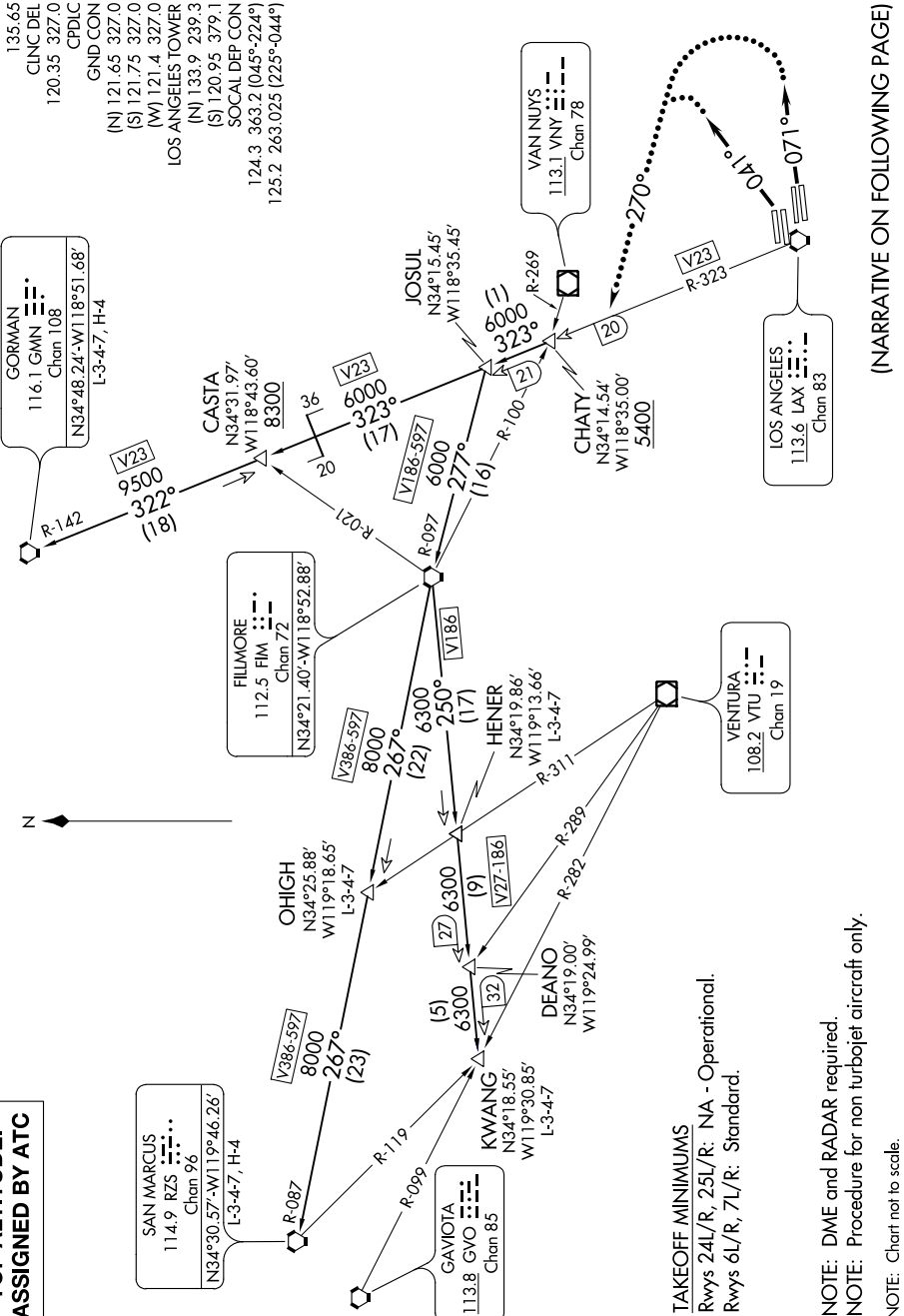
DEANO
 N34°19.00'
 W119°24.99'

CHATY
 N34°14.54'
 W118°35.00'
 5400

VANNIUNYS
 113.1 VNY
 Chan 78

VENTURA
 108.2 VTU
 Chan 19

LOS ANGELES
 113.6 LAX
 Chan 83



TAKEOFF MINIMUMS
 Rwy 24L/R, 25L/R: NA - Operational.
 Rwy 6L/R, 7L/R: Standard.

NOTE: DME and RADAR required.
NOTE: Procedure for non turboprop aircraft only.
NOTE: Chart not to scale.

(NARRATIVE ON FOLLOWING PAGE)

(CHATY5.CHATY) 27APR17
CHATY FIVE DEPARTURE

LOS ANGELES, CALIFORNIA
 LOS ANGELES INTL (LAX)

SW-3, 24 MAY 2018 to 21 JUN 2018