

# DOTSS TWO DEPARTURE (RNAV)

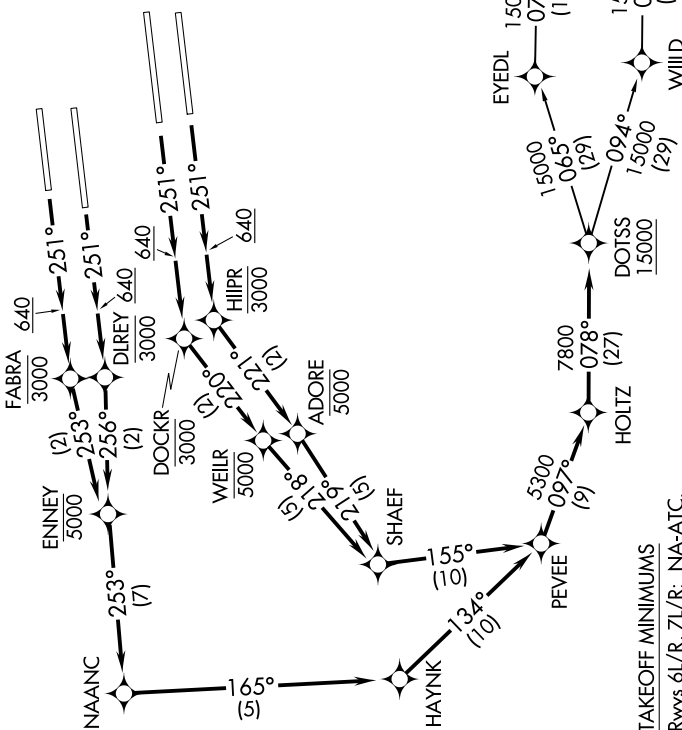
AL-237 (FAA)

LOS ANGELES INTL (LAX)  
LOS ANGELES, CALIFORNIA

SW-3, 24 MAY 2018 to 21 JUN 2018

**TOP ALTITUDE:  
17000**

D-ATIS DEP 135.65  
 CLNC DEL 120.35 327.0  
 CPDLC  
 GND CON (N) 121.65 327.0  
 (S) 121.75 327.0  
 (W) 121.4 327.0  
 LOS ANGELES TOWER (N) 133.9 239.3  
 (S) 120.95 379.1  
 SOCIAL DEP CON 124.3 363.2 (045°-224°)  
 125.2 263.025 (225°-044°)



**TAKEOFF MINIMUMS**

Rwys 6L/R, 7L/R: NA-ATC.  
 Rwys 24L/R, 25L/R: Standard with minimum climb of 500' per NM to 640.

- NOTE: DME/DME/IRU or GPS required.
- NOTE: RADAR required.
- NOTE: RNAV 1.
- NOTE: Turbojet aircraft only.
- NOTE: Turn at HIIPR and DOCKR are required for ATC separation.

(NARRATIVE ON FOLLOWING PAGE)

NOTE: Chart not to scale.

# DOTSS TWO DEPARTURE (RNAV)

SW-3, 24 MAY 2018 to 21 JUN 2018