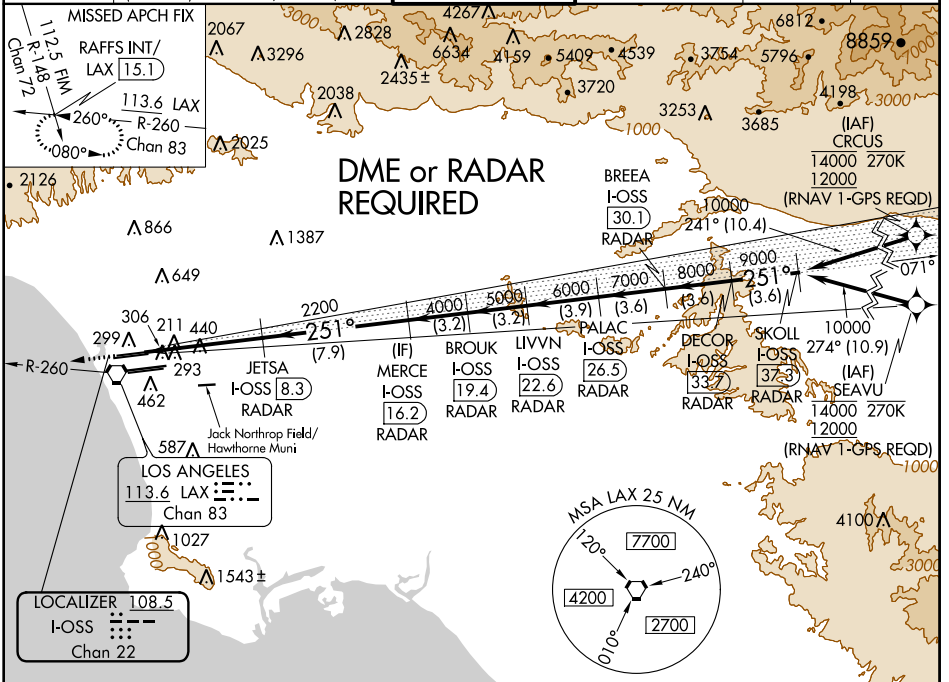


LOC/DME I-OSS 108.5 Chan 22	APP CRS 251°	Rwy Idg TDZE Apt Elev	8925 122 128
--	------------------------	-----------------------------	---

ILS RWY 24R (CAT II & III)

LOS ANGELES INTL (LAX)

D-ATIS ARR 133.8 DEP 135.65	SOCAL APP CON 124.3 363.2 (APCH FM WEST) 124.5 235.975 (225°-044°)	LOS ANGELES TOWER N 133.9 239.3 S 124.95 379.1	GND CON N 121.65 327.0 S 121.75 327.0 W 121.4 327.0	CLNC DEL 120.35 327.0	CPDLC



SW-3, 24 MAY 2018 to 21 JUN 2018

SW-3, 24 MAY 2018 to 21 JUN 2018

ELEV 128	D	TDZE 122	2000	LAX R-260	RAFFS INT	VGSI and ILS glidepath not coincident (VGSI Angle 3.00/TCH 73).	SKOLL I-OSS			
			hdg 251°							
			2200	4000	5000	6000	7000	8000	9000	10000
			GS 3.00°	TCH 55						
			1025'	6.4 NM	7.9 NM	3.2 NM	3.2 NM	3.9 NM	3.6 NM	3.6 NM
			CATEGORY	A	B	C	D			
			S-ILS 24R	CAT II RA 118/12 100 DA 222						
			S-ILS 24R	CAT III RVR 06						
<h2>CATEGORY II & III ILS - SPECIAL AIRCREW & AIRCRAFT CERTIFICATION REQUIRED</h2>										

LOS ANGELES, CALIFORNIA
Amdt 26 12OCT17

33°57'N-118°24'W

LOS ANGELES INTL (LAX) ILS RWY 24R (CAT II & III)