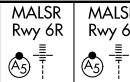


| | | | | |
|---|------------------------|-----------------------------|---|---|
| LOC/DME I-GPE 111.7 Chan 54 | APP CRS 071° | Rwy Idg TDZE Apt Elev | 6R 9748 116 128 | 6L 8566 119 128 |
|---|------------------------|-----------------------------|---|---|

ILS or LOC RWY 6R

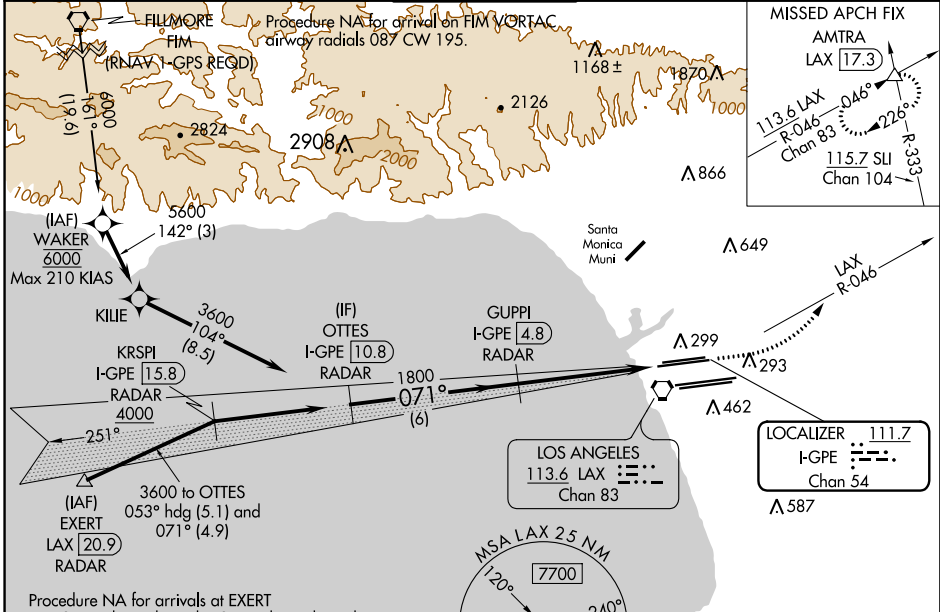
LOS ANGELES INTL (LAX)

Simultaneous approach authorized. For inop ALS, increase S-LOC 6R Cat C/D visibility to RVR 5500. Inop table does not apply to Sidestep 6L Cats A and B.
#RVR 1800 authorized with use of FD or AP or HUD to DA.

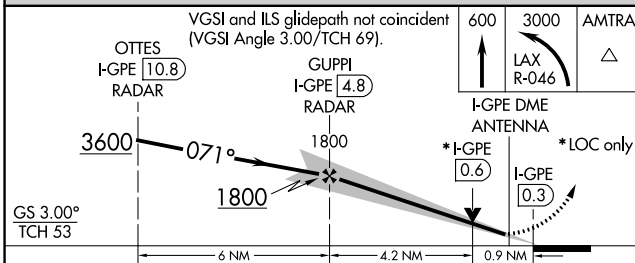


MISSED APPROACH: Climb to 600 then climbing left turn to 3000 on LAX VORTAC R-046 to AMTRA INT/ LAX 17.3 DME and hold.

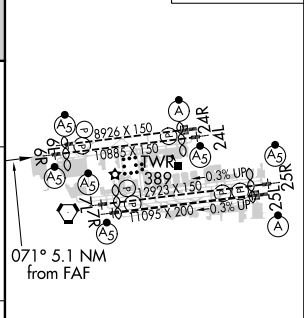
| | | | | | | |
|---|--|--|--|---|---|-------|
| D-ATIS ARR 133.8 DEP 135.65 | SOCAL APP CON 124.3 363.2 (APCH FM WEST) 124.5 235.975 (225°-044°) | 124.9 269.0 (090°-224°) 128.5 360.7 (045°-089°) | LOS ANGELES TOWER N 133.9 239.3 S 120.95 379.1 | GND CON N 121.65 327.0 S 121.75 327.0 W 121.4 327.0 | CLNC DEL 120.35 327.0 | CPDLC |
|---|--|--|--|---|---|-------|



DME or RADAR REQUIRED



| | |
|----------|-------------|
| ELEV 128 | TDZE 6R 116 |
| | TDZE 6L 119 |



| CATEGORY | A | B | C | D |
|-------------|---------------------|--------------------|---|------------------------|
| S-ILS 6R# | 316/24 200 (200-½) | | | |
| S-LOC 6R | 460/24 344 (400-½) | 460/30 344 (400-¾) | | |
| SIDESTEP 6L | 460/55 341 (400-1¼) | | | 460-1½ 341 (400-1½) |

| | | | | | |
|---------------------------------|--------------|------|------|------|------|
| TDZ/CL Rwy 6R, 7L, 24R, and 25L | HIRL all Rwy | | | | |
| FAF to MAP 5.1 NM | | | | | |
| Knots | 60 | 90 | 120 | 150 | 180 |
| Min:Sec | 5:06 | 3:24 | 2:33 | 2:02 | 1:42 |