

LOC/DME HAS 111.1 Chan 48	APP CRS 071°	Rwy Idg 7L 11259 7R 11095 TDZE 128 128 Apt Elev 128 128
---	------------------------	--

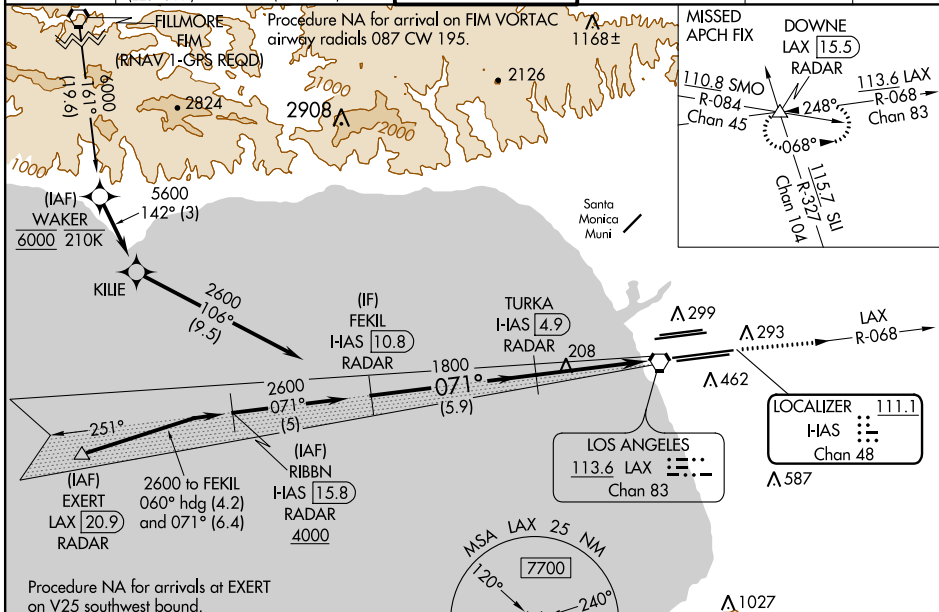
ILS or LOC RWY 7L

LOS ANGELES INTL (LAX)

Simultaneous approach authorized. DME or RADAR required.
Inop table does not apply to Sidestep Rwy 7R Cats A and B.

MALSR Rwy 7L	MALSR Rwy 7R	MISSED APPROACH: Climb to 3000 on LAX VORTAC R-068 to DOWNE INT/LAX 1.5.5 DME/RADAR and hold.
--------------	--------------	---

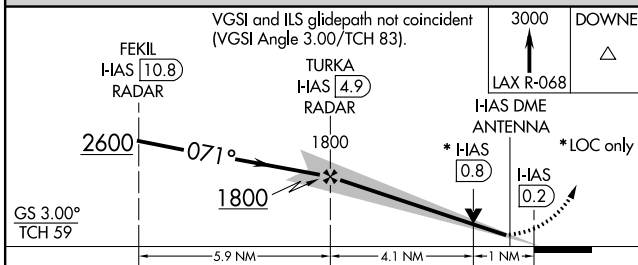
D-ATIS ARR 133.8 DEP 135.65	SOCAL APP CON 124.3 363.2 (APCH FM WEST) 124.5 235.975 (225°-044°)	124.9 269.0 (090°-224°) 128.5 360.7 (045°-089°)	LOS ANGELES TOWER N 133.9 239.3 S 120.95 379.1	GND CON N 121.65 327.0 S 121.75 327.0 W 121.4 327.0	CLNC DEL 120.35 327.0	CPDLC
---	--	--	--	---	---	-------



SW-3, 24 MAY 2018 to 21 JUN 2018

SW-3, 24 MAY 2018 to 21 JUN 2018

ELEV 128	TDZE 7L 128	TDZE 7R 128
----------	-------------	-------------



071° 5.1 NM from FAF

CATEGORY	A	B	C	D
S-ILS 7L	336/18		208 (300-½)	
S-LOC 7L	520/24	392 (400-½)		520/35 392 (400-¾)
SIDESTEP 7R	520/55 392 (400-¼)			520-1½ 392 (400-1½)

TDZ/CL Rws 6R, 7L, 24R, and 25L					
HIRL all Rws					
FAF to MAP 5.1 NM					
Knots	60	90	120	150	180
Min:Sec	5:06	3:24	2:33	2:02	1:42