

LAXX ONE DEPARTURE

AL-237 (FAA)

LOS ANGELES INTL (LAX)
LOS ANGELES, CALIFORNIA

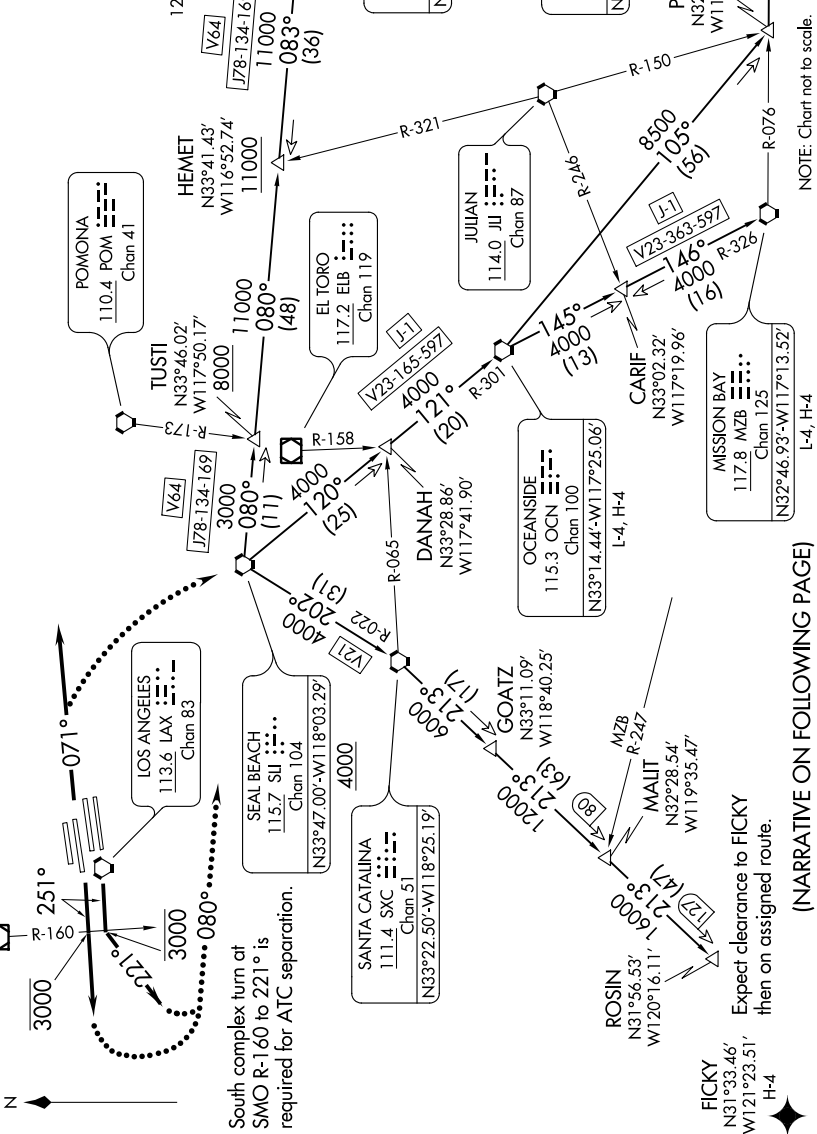
SW-3, 24 MAY 2018 to 21 JUN 2018

**TOP ALTITUDE:
ASSIGNED BY ATC**

TAKEOFF MINIMUMS
Rwy 6L/R, 7L/R, 24L/R, 25L/R: Standard.

NOTE: This departure is for turbojet aircraft only.
NOTE: RADAR and DME required.

D-ATIS DEP 135.65
CLNC DEL 120.35 327.0
CPDLC
GND CON (N) 121.65 327.0 (S) 121.75 327.0 (W) 121.4 327.0
LOS ANGELES TOWER (N) 133.9 239.3 (S) 120.95 379.1
SOCAL DEP CON 124.3 363.2 (045°-224°) 125.2 263.025 (225°-044°)



NOTE: Chart not to scale.

(NARRATIVE ON FOLLOWING PAGE)

SW-3, 24 MAY 2018 to 21 JUN 2018

LAXX ONE DEPARTURE

LOS ANGELES, CALIFORNIA
LOS ANGELES INTL (LAX)