

MUELR FOUR DEPARTURE (RNAV)

AL-237 (FAA)

LOS ANGELES INTL (LAX)
LOS ANGELES, CALIFORNIA

SW-3, 24 MAY 2018 to 21 JUN 2018

TOP ALTITUDE:
10000

SAN MARCUS

RZS

10000
288°
(24)

SCHOR

10000
288°
(9)

10000
273°
(16)

WGGNR

10000
28°
(11)

IKAYE

10000
342°
(10)

FIXIT

10000 290K

MUELR

253°
(11)

257°
(12)

NAANC

253°
(7)

ENNEY

5000
1300

D-ATIS DEP
135.65
CLNCDEL
120.35 327.0
CPDLC

GND CON
(N) 121.65 327.0
(S) 121.75 327.0
(W) 121.4 327.0

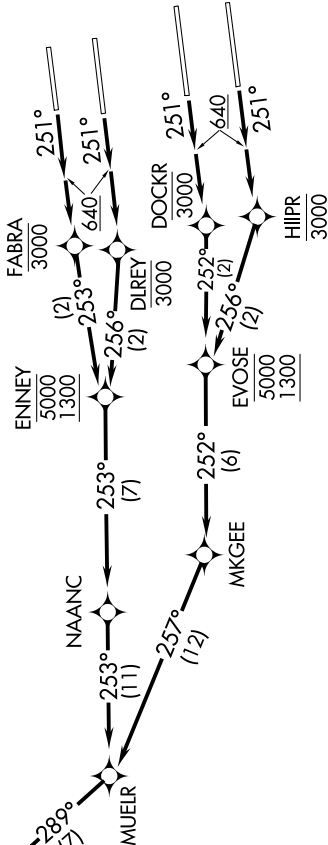
LOS ANGELES TOWER
(N) 133.9 239.3
(S) 120.95 379.1
SOCAL DEP CON

124.3 363.2 (045°-224°)
125.2 263.023 (225°-044°)



TAKEOFF MINIMUMS
Rwys 6L/R, 7L/R: NA-ATC.
Rwys 24L/R, 25L/R: Standard with minimum climb
of 500' per NM to 640.

NOTE: DME/DME/IRU or GPS required.
NOTE: RADAR required.
NOTE: RNAV 1.
NOTE: Turbojets only.
NOTE: Maintain at or below 250K unless otherwise directed by ATC.



(NARRATIVE ON FOLLOWING PAGE)

NOTE: Chart not to scale.

SW-3, 24 MAY 2018 to 21 JUN 2018

MUELR FOUR DEPARTURE (RNAV)

LOS ANGELES, CALIFORNIA
LOS ANGELES INTL (LAX)