

SW-3, 24 MAY 2018 to 21 JUN 2018

**TOP ALTITUDE:  
FL230**

**TAKEOFF MINIMUMS**

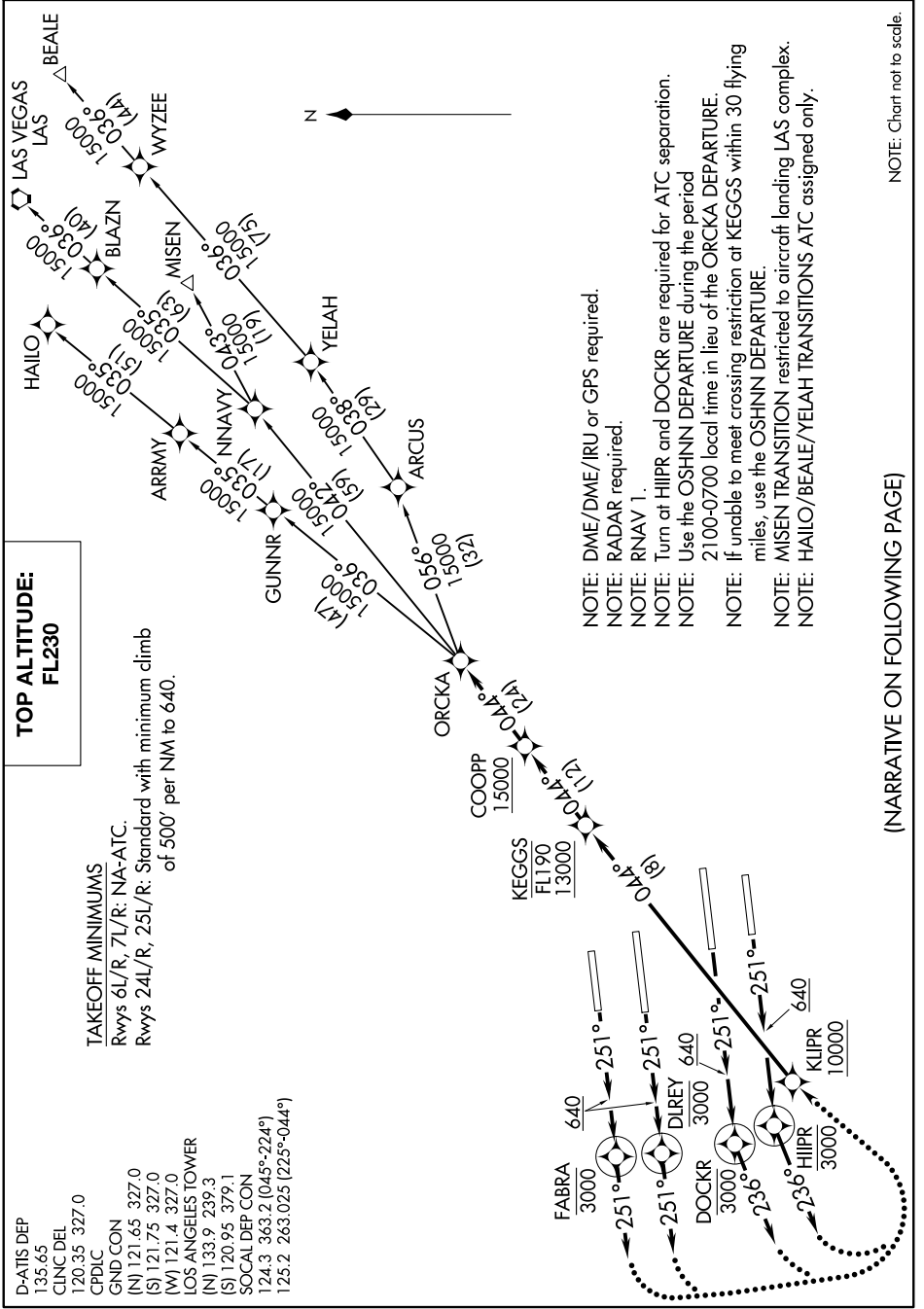
Rwys 6L/R, 7L/R: NA-AIC.

Rwys 24L/R, 25L/R: Standard with minimum climb of 500' per NM to 640.

D-ATIS DEP  
135.65  
CUNCDL  
120.35 327.0  
CPDLC

GND CON  
(N) 121.65 327.0  
(S) 121.75 327.0  
(W) 121.4 327.0

LOS ANGELES TOWER  
(N) 133.9 239.3  
(S) 120.95 379.1  
SOCAL DEP CON  
124.3 363.2 (045°-224°)  
125.2 263.025 (225°-044°)



(NARRATIVE ON FOLLOWING PAGE)

NOTE: Chart not to scale.

SW-3, 24 MAY 2018 to 21 JUN 2018