


RNAV (RNP) Z RWY 24L

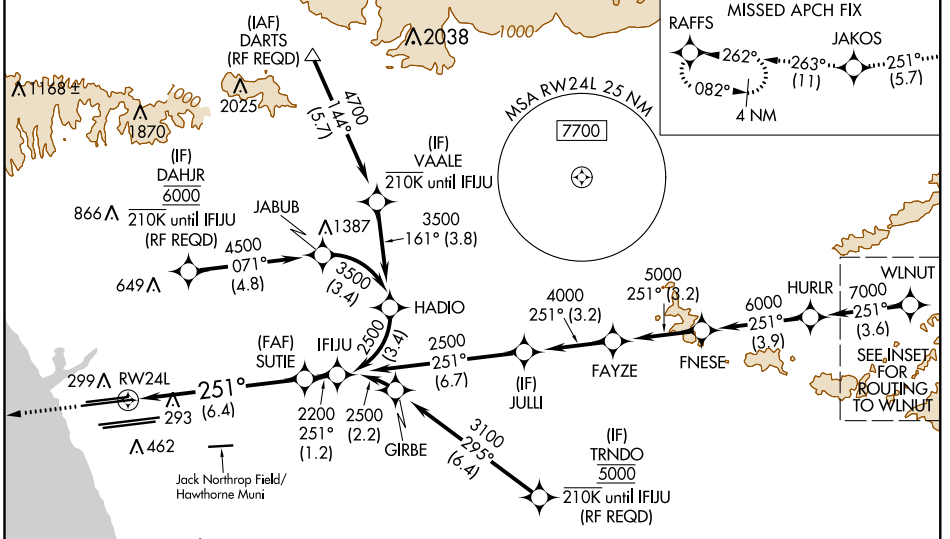
LOS ANGELES INTL (LAX)

APP CRS	Rwy Idg	9483
251°	TDZE	123
	Apt Elev	128

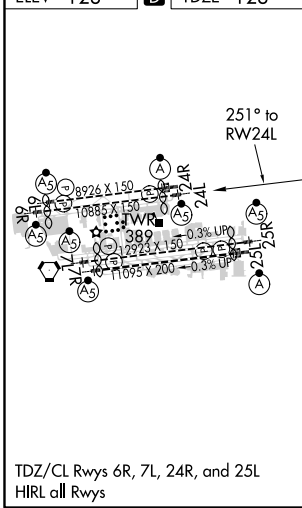
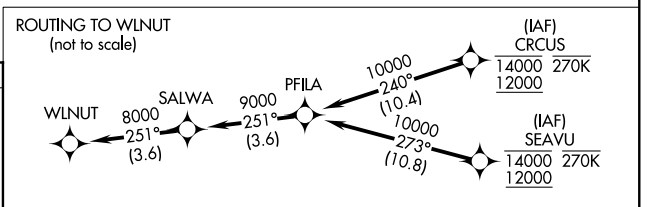
▼ For uncompensated Baro-VNAV systems, procedure NA below 5°C (41°F) or above 54°C (130°F). Simultaneous approach authorized. Simultaneous approach authorized with KHHR. GPS required. For inop ALS, increase RNP 0.15 all Cats visibility to 1½ SM.

MALSR  MISSED APPROACH: Climb to 2000 on track 251° to JAKOS and track 263° to RAFFS and hold.

D-ATIS	SOCAL APP CON	LOS ANGELES TOWER	GND CON	CLNC DEL	CPDLC
ARR 133.8	124.3 363.2 (APCH FM WEST)	124.9 269.0 (090°-224°)	N 121.65 327.0 S 121.75 327.0 W 121.4 327.0	120.35 327.0	
DEP 135.65	124.5 235.975 (225°-044°)	128.5 360.7 (045°-089°)			



ELEV 128	D	TDZE 123
-----------------	----------	-----------------



2000	JAKOS	tr 263°	RAFFS	See planview for multiple IF locations.	IFJU
tr 251°					
VGSi and RNAV glidepath not coincident (VGSi Angle 3.00/TCH 79).					
RW24L					GP 3.00° TCH 59
	6.4 NM		1.2 NM		

CATEGORY	A	B	C	D
RNP 0.15 DA		545/50	422 (500-1)	
RNP 0.30 DA		592/60	469 (500-1½)	

TDZ/CL Rwy's 6R, 7L, 24R, and 25L
HIRL all Rwy's

AUTHORIZATION REQUIRED

SW-3, 24 MAY 2018 to 21 JUN 2018

SW-3, 24 MAY 2018 to 21 JUN 2018