

APP CRS	Rwy Idg	11095
251°	TDZE	104
	Apt Elev	128

RNAV (RNP) Z RWY 25L

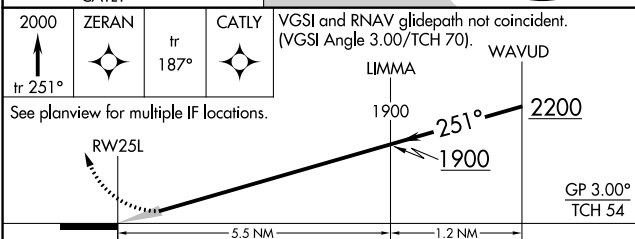
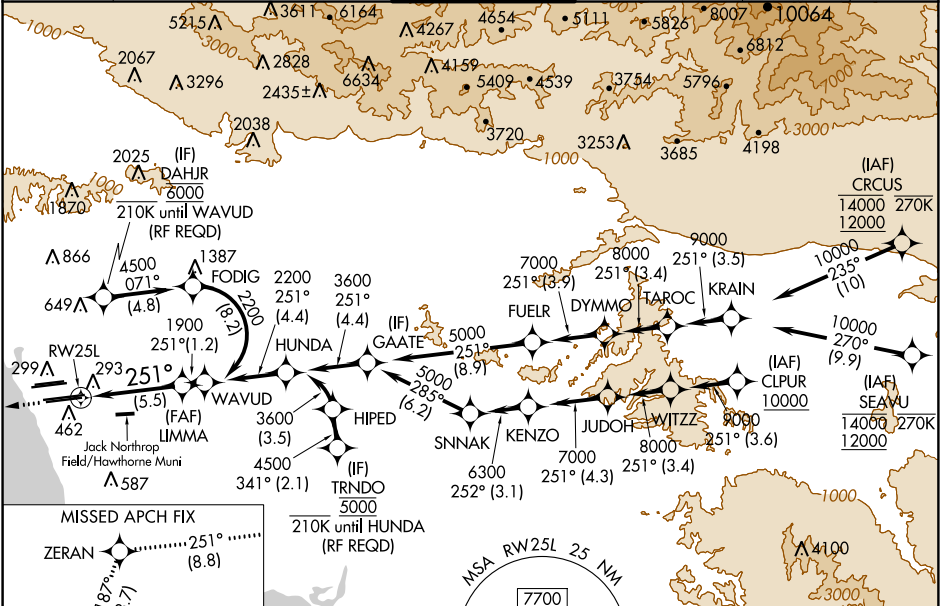
LOS ANGELES INTL (LAX)

For uncompensated Baro-VNAV systems, procedure NA below 5°C (41°F) or above 54°C (130°F).
GPS required. Simultaneous approach authorized.
Simultaneous approach authorized with HHR.

ALSIF-2

MISSED APPROACH: Climb to 2000 on track 251° to ZERAN and on track 187° to CATLY and hold.

D-ATIS	SOCAL APP CON		LOS ANGELES TOWER		GND CON		CINC DEL	CPDLC
ARR 133.8	124.3	363.2	124.9	269.0	N 121.65	327.0	120.35	
DEP 135.65	<small>(APCH FM WEST) (090°-224°)</small>		<small>(045°-089°)</small>		S 121.75	327.0	327.0	
	124.5	235.975	128.5	360.7	W 121.4	327.0		
	<small>(225°-044°)</small>		<small>(045°-089°)</small>					



CATEGORY	A	B	C	D
RNP 0.15 DA		445/30	341 (400-5%)	
RNP 0.30 DA		543/50	439 (500-1)	

ELEV 128 D TDZE 104

AUTHORIZATION REQUIRED

TDZ/CL Rwys 6R, 7L, 24R, and 25L
HIRL all Rwys

SW-3, 24 MAY 2018 to 21 JUN 2018

SW-3, 24 MAY 2018 to 21 JUN 2018