


| | | |
|-------------|----------|--------------|
| APP CRS | Rwy Idg | 11134 |
| 251° | TDZE | 104 |
| | Apt Elev | 128 |

RNAV (RNP) Z RWY 25R

LOS ANGELES INTL (LAX)

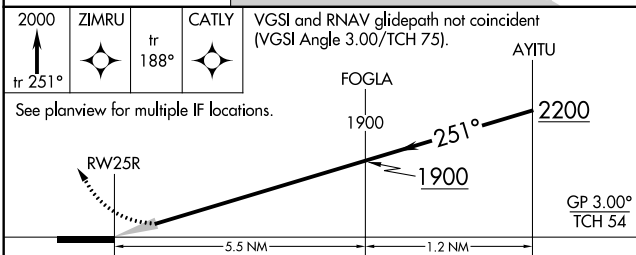
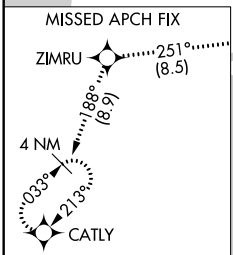
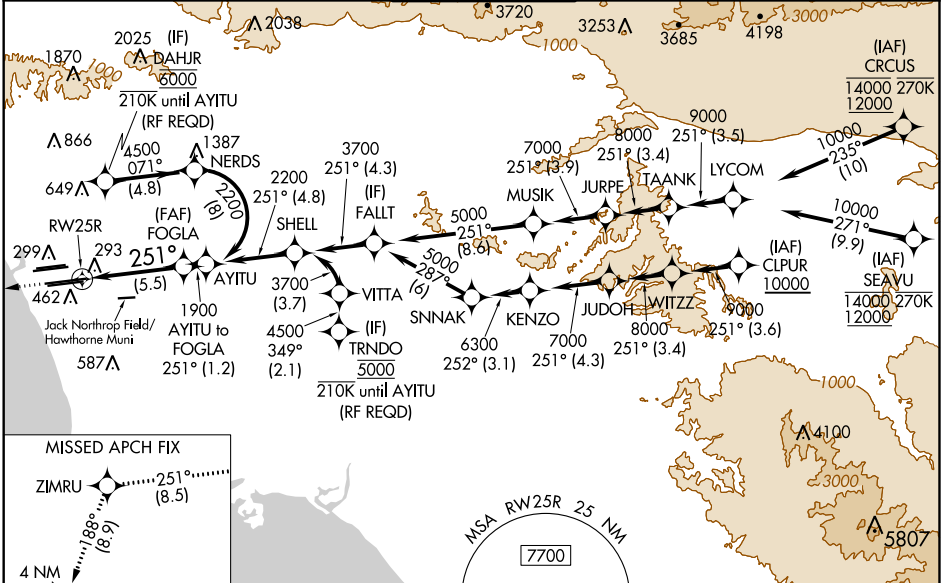
For uncompensated Baro-VNAV systems, procedure NA below 5°C (41°F) or above 54°C (130°F). Simultaneous approach authorized. Simultaneous approach authorized with HHR. GPS required. For inop ALS, increase RNP 0.11 all Cats visibility to RVR 6000.

MALSR



MISSED APPROACH: Climb to 2000 on track 251° to ZIMRU and track 188° to CATLY and hold.

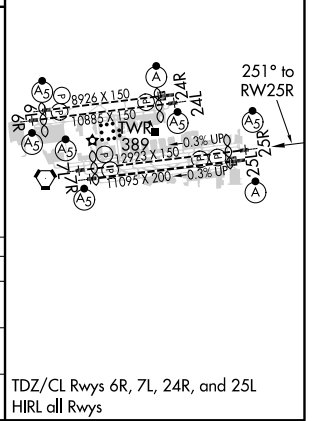
| | | | | | | | | |
|-------------------|---------------|----------------|-------------------|--------------|-----------------|--------------|-----------------|--------------|
| D-ATIS | SOCAL APP CON | | LOS ANGELES TOWER | | GND CON | | CLNC DEL | CPDLC |
| ARR 133.8 | 124.3 | 363.2 | 124.9 | 269.0 | N 133.9 | 239.3 | N 121.65 | 327.0 |
| DEF 135.65 | 124.5 | 235.975 | 128.5 | 360.7 | S 120.95 | 379.1 | S 121.75 | 327.0 |
| | (225°-044°) | | (090°-224°) | (045°-089°) | | | W 121.4 | 327.0 |



| | | | | |
|-------------|---|--------|-------------|---|
| CATEGORY | A | B | C | D |
| RNP 0.11 DA | | 453/40 | 349 (400-¾) | |
| RNP 0.30 DA | | 544/50 | 440 (500-1) | |

AUTHORIZATION REQUIRED

| | |
|----------|----------|
| ELEV 128 | TDZE 104 |
|----------|----------|



SW-3, 24 MAY 2018 to 21 JUN 2018

SW-3, 24 MAY 2018 to 21 JUN 2018