


WAAS CH <b>56407</b> W24B	APP CRS <b>251°</b>	Rwy Idg TDZE Apt Elev	<b>9483</b> <b>123</b> <b>128</b>
---------------------------------	------------------------	-----------------------------	---

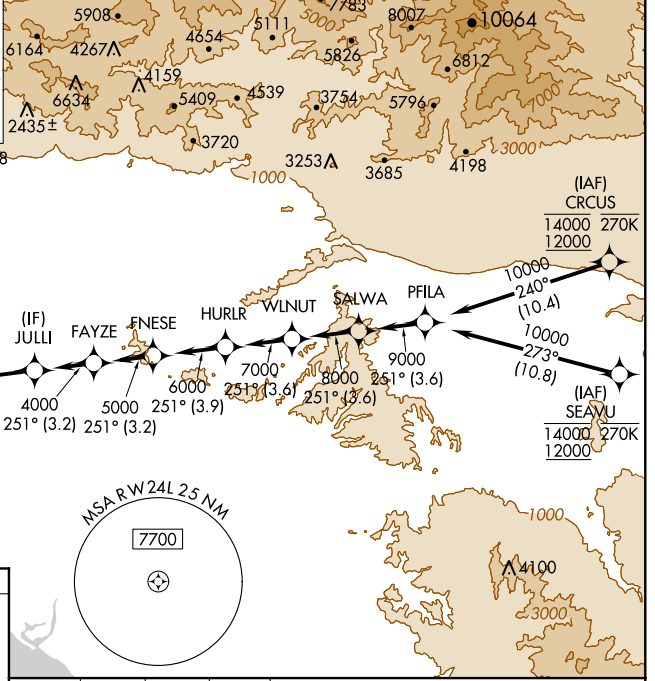
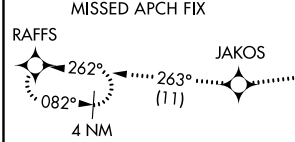
# RNAV (GPS) Y RWY 24L

LOS ANGELES INTL (LAX)

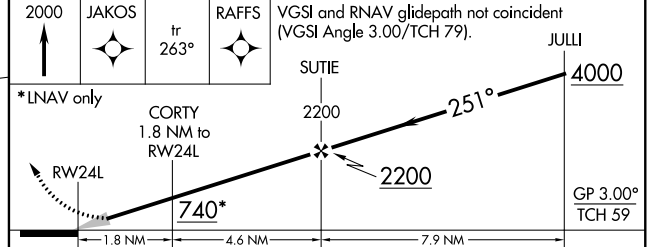
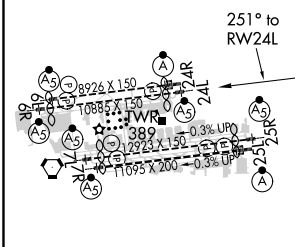
For uncompensated Baro-VNAV systems, LNAV/VNAV NA below 5°C (41°F) or above 54°C (130°F). Simultaneous approach authorized. LNAV procedure NA during simultaneous operations. Use of FD or AP providing RNAV track guidance required during simultaneous operations. Simultaneous approach authorized with HHR. DME/DME RNP-0.3 NA.

MALSR  MISSED APPROACH: Climb to 2000 direct JAKOS and track 263° to RAFFS and hold.

D-ATIS ARR <b>133.8</b> DEP <b>135.65</b>	SOCAL APP CON <b>124.3 363.2</b> <small>(APCH FM WEST)</small> <small>(225°-044°)</small>	<b>124.9 269.0</b> <small>(090°-224°)</small>	<b>269.0</b> <small>(045°-089°)</small>	LOS ANGELES TOWER <b>N 133.9 239.3</b> <b>S 120.95 379.1</b>	GND CON <b>N 121.65 327.0</b> <b>S 121.75 327.0</b> <b>W 121.4 327.0</b>	CLNC DEL <b>120.35</b> <b>327.0</b>	CPDLC
---	--	--	--	--	---	---	-------



ELEV 128	<b>D</b>	TDZE 123
----------	----------	----------



TDZ/CL Rwy's 6R, 7L, 24R, and 25L HIRL all Rwy's	*LNAV only			
	A	B	C	D
LPV DA		323/18	200 (200-½)	
LNAV/VNAV DA		608/60	485 (500-1¼)	
LNAV MDA	660/24	537 (600-½)	660/55	537 (600-1¼)

SW-3, 24 MAY 2018 to 21 JUN 2018

SW-3, 24 MAY 2018 to 21 JUN 2018